

13.0 Naturita, Colorado, Disposal Site

13.1 Compliance Summary

The Naturita, Colorado, Uranium Mill Tailings Radiation Control Act (UMTRCA) Title I Disposal Site was inspected on June 8, 2021. No changes were observed on the disposal cell or in the associated drainage features. Inspectors identified several minor maintenance needs but found no cause for a follow-up inspection.

Groundwater monitoring is not required and was discontinued in 2014. The site-specific U.S. Department of Energy (DOE) Long-Term Surveillance Plan (DOE 2019) (LTSP) was revised in 2019 to exclude the groundwater monitoring requirement.

13.2 Compliance Requirements

Requirements for the long-term surveillance and maintenance of the site are specified in the LTSP in accordance with procedures established to comply with the requirements of the U.S. Nuclear Regulatory Commission (NRC) general license at Title 10 *Code of Federal Regulations* Section 40.27 (10 CFR 40.27). Table 13-1 lists these requirements.

Table 13-1. License Requirements for the Naturita, Colorado, Disposal Site

Requirement	LTSP	This Report	10 CFR 40.27
Annual Inspection and Report	Sections 3.2, 3.3	Section 13.4	(b)(3)
Follow-Up Inspections	Section 3.4	Section 13.5	(b)(4)
Site Maintenance	Section 3.5.1	Section 13.6	(b)(5)
Environmental Monitoring	Section 3.6	Section 13.7	(b)(2)
Emergency Measures	Section 3.5.2	Section 13.8	—

13.3 Institutional Controls

The 26.65-acre site, identified by the property boundary shown in Figure 13-1, is owned by the United States and was accepted under the NRC general license in 1999. DOE is the licensee and, in accordance with the requirements for UMTRCA Title I sites, is responsible for the custody and long-term care of the site. Institutional controls (ICs) at the site include federal ownership of the property, administrative controls, and the following physical ICs that are inspected annually: the disposal cell and associated drainage features, entrance gate and sign, perimeter fence and signs, site markers, survey and boundary monuments, and wellhead protectors.

13.4 Inspection Results

The site, 13 miles northwest of Naturita, Colorado, was inspected on June 8, 2021. The inspection was conducted by K. Meadows and C. Wentz of the Legacy Management Support (LMS) contractor. A. Denny, the Office of Legacy Management (LM) site manager; M. Cosby from the Colorado Department of Public Health and Environment; and C. Oliver and M. Williams, representing the LMS contractor, also attended the inspection. The purposes of the

inspection were to confirm the integrity of visible features at the site, identify changes in conditions that might affect conformance with the LTSP, and evaluate maintenance or additional inspection and monitoring.

13.4.1 Site Surveillance Features

Figure 13-1 shows the locations of site features, including site surveillance features and inspection areas, in black and gray font. Site features that are present but not required to be inspected are shown in italic font. Observations from previous inspections that are currently monitored are shown in blue text, and new observations identified during the 2021 annual inspection are shown in red font. Inspection results and recommended maintenance activities associated with site surveillance features are described in the following subsections. Photographs to support specific observations are identified in the text and in Figure 13-1 by photograph location (PL) numbers. The photographs and photograph log are presented in Section 13.10.

13.4.1.1 Site Access, Entrance Gate, and Entrance Sign

Access to the site is from Colorado Highway 141 to Montrose County Road EE22, which borders the northeast side of the site. Entrance to the site is through a locked steel gate directly off County Road EE22. The entrance sign is next to the entrance gate (PL-1). No maintenance needs were identified.

13.4.1.2 Perimeter Fence and Signs

A barbed-wire perimeter fence encloses the site. There are 25 perimeter signs positioned along the perimeter fence attached to steel posts set in concrete and set back 5 feet from the property line. Inspectors noticed a detached fence bracket and vegetation growing in the fence line near perimeter sign P6. Both require maintenance. Erosion around the concrete base of perimeter sign P22 will continue to be monitored. No other maintenance needs were identified.

13.4.1.3 Site Markers

The site has two granite site markers. Site marker SMK-1 is just inside the entrance gate, and site marker SMK-2 (PL-2) is on the top slope of the disposal cell. No maintenance needs were identified.

13.4.1.4 Survey and Boundary Monuments

Three survey monuments and 14 boundary monuments delineate the property boundary. Boundary monuments BM-1 through BM-17 mark the property corners. Survey monuments SM-3, SM-4, and SM-11 represent boundary monuments BM-3, BM-4, and BM-11, respectively (PL-3). No maintenance needs were identified.

13.4.1.5 Aerial Survey Quality Control Monuments

Four aerial survey quality control monuments were installed before the 2021 inspection (PL-4). No maintenance needs were identified.

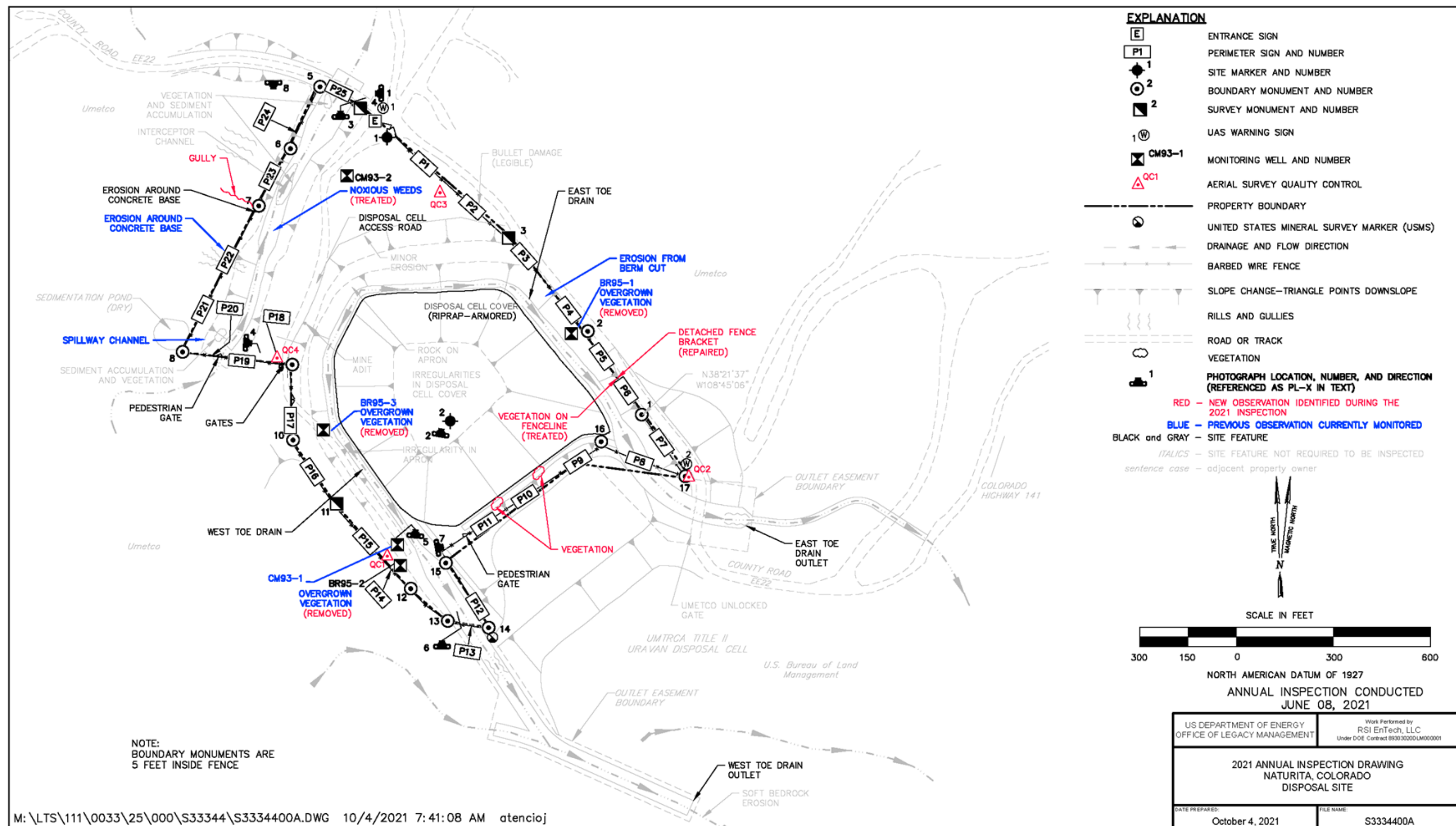


Figure 13-1. 2021 Annual Inspection Drawing for the Naturita, Colorado, Disposal Site

This page intentionally left blank

13.4.1.6 *Monitoring Wells*

The site has five groundwater monitoring wells. The wellhead protectors were intact and locked (PL-5). Overgrown vegetation identified in the 2020 inspection around wells BR95-1, BR95-3, and CM93-1 was removed in preparation for well abandonment. No immediate maintenance needs were identified.

13.4.2 *Inspection Areas*

In accordance with the LTSP, the site is divided into three inspection areas to ensure a thorough and efficient inspection. The inspection areas are (1) the disposal cell, (2) the remainder of the site, and (3) the outlying area. Inspectors examined specific site surveillance features within each area and looked for evidence of erosion, settling, slumping, or other modifying processes that might affect the site's conformance with LTSP requirements.

13.4.2.1 *Disposal Cell*

The disposal cell, completed in 1998, occupies 10 acres (PL-6). The disposal cell is armored with riprap to control erosion. The riprap is rounded, with larger diameter rock on the side slopes versus on the top slope. There was no evidence of settling, slumping, erosion, rock degradation, or other modifying processes that might affect the integrity of the disposal cell.

Irregularities in the riprap on the top slope of the disposal cell continue to be observed. The irregularities consist of slightly darker rock that are not lower than surrounding areas and have not changed over time. Another irregularity in the apron area on the west side of the disposal cell appears to be old vehicle tracks. The irregularity does not present a threat to the disposal cell or surrounding area. Inspectors will continue to monitor these areas for potential impacts. No maintenance needs were identified.

13.4.2.2 *Remainder of the Site*

Woody vegetation is growing on the south side of the disposal cell between the apron and the site boundary fence line (PL-7). This vegetation is not impacting the disposal cell, but inspectors will continue to monitor this area.

Two riprap-armored toe drains (the west and east toe drains) collect water from the disposal cell side slopes and divert it to the southeast. The west toe drain outlet is south of the site in an easement. Soft bedrock is being eroded near the west toe drain outlet, but that erosion does not threaten the performance of the toe drain, and repairs are not necessary. The east toe drain outlet is southeast of the site in an easement. Water is conveyed to the east toe drain outlet through the east toe drain and five culverts under County Road EE22. Vegetation continues to grow in the accumulating sediment just outside the culverts, potentially blocking stormwater flow. Erosion has exposed resistant bedrock near the east toe drain outlet but does not threaten the performance of the toe drain, and repairs are not necessary. Some sediment has accumulated in the upper end of the east and west toe drains, allowing scattered vegetation to grow, but this has not adversely affected the performance of the toe drains.

A riprap-armored interceptor channel, upgradient and northwest of the disposal cell, diverts stormwater and snowmelt runoff to the northeast under County Road EE22. Some sediment has eroded from the offsite area upslope from the channel and is being deposited in the channel. Sediment accumulation and associated vegetation have not adversely affected the performance of the interceptor channel (PL-8). Herbicide treatment of rabbitbrush plants is ongoing.

During the 2019 inspection, headcutting erosion was identified within the spillway channel below the sedimentation pond on the outlying area northwest of the site. Inspectors noted minor increases in erosion in this area during the 2021 inspection and will continue to monitor this area.

The disposal cell access road along the northwest side of the site descends through shale and sandstone units of the Salt Wash Member of the Morrison Formation. The road provides access to the disposal cell and monitoring wells on the west side of the site.

Erosion in the steep cliff below the previous berm cut alongside County Road EE22 does not threaten the integrity of the disposal cell or site features. The berm cut was repaired in 2020. Inspectors will continue to monitor this area. No maintenance needs were identified.

13.4.2.3 Outlying Area

The surrounding area beyond the site boundary for a distance of 0.25 mile was visually observed for erosion, changes in land use, or other phenomena that might affect the long-term integrity of the site. The area has been highly disturbed by mining, quarrying, reclamation, and road building.

Inspectors noticed a gully forming on the outlying area along the northern site boundary near perimeter signs P-22 and P-23. The gully originates on the hillside beyond the northern perimeter fence and is slowly growing toward the fence line. Inspectors will continue to monitor this area for ongoing erosion and resulting impacts. No maintenance needs were identified.

13.5 Follow-Up Inspections

LM will conduct follow-up inspections if (1) a condition is identified during the annual inspection or other site visit that requires a return to the site to evaluate the condition or (2) LM is notified by a citizen or outside agency that conditions at the site are substantially changed. No need for a follow-up inspection was identified.

13.6 Maintenance and Repair

Before the 2021 inspection, four aerial survey quality control monuments were installed, and the vegetation overgrowing wells BR95-1, BR95-3, and CM93-1 was removed.

Inspectors documented minor maintenance during the 2021 inspection that was completed following the inspection:

- Treated vegetation growing in the fence line near perimeter sign P6
- Repaired detached fence bracket near perimeter sign P6

13.7 Environmental Monitoring

In accordance with the LTSP, LM ensures that a plant specialist or other qualified person conducts vegetation monitoring (DOE 2019).

If volunteer plant growth or sedimentation becomes extreme enough to potentially degrade the function of engineered structures, LM will evaluate the potential impact and select appropriate responses. The vegetation growing in the southern fence area does not require maintenance, but the vegetation growing in the fence line near P6 required treatment. No other maintenance needs were identified.

13.8 Emergency Measures

Emergency measures are actions DOE will take in response to “unusual damage or disruption” that threatens or compromises site safety, security, or integrity (10 CFR 40 Appendix A Criterion 12). No need for emergency measures was identified.

13.9 References

10 CFR 40.27. U.S. Nuclear Regulatory Commission, “General License for Custody and Long-Term Care of Residual Radioactive Material Disposal Sites,” *Code of Federal Regulations*.

DOE (U.S. Department of Energy), 2019. *Long-Term Surveillance Plan for the Naturita, Colorado, Disposal Site*, LMS/NAD/S13227, December.

13.10 Photographs

Photograph Location Number	Azimuth	Photograph Description
PL-1	270	Entrance Sign with Unmanned Aircraft System Sign
PL-2	10	Site Marker on Disposal Cell Top
PL-3	—	Survey Monument SM-4
PL-4	95	Aerial Survey Quality Control Monument QC-4
PL-5	5	Monitoring Well CM93-1
PL-6	0	Disposal Cell
PL-7	180	Vegetation Growing near Southern Fence Line
PL-8	80	Vegetation Growing in Interceptor Channel

Note:

— = Photograph taken vertically from above.



PL-1. Entrance Sign with Unmanned Aircraft System Sign



PL-2. Site Marker on Disposal Cell Top



PL-3. Survey Monument SM-4



PL-4. Aerial Survey Quality Control Monument QC-4



PL-5. Monitoring Well CM93-1



PL-6. Disposal Cell



PL-7. Vegetation Growing near Southern Fence Line



PL-8. Vegetation Growing in Interceptor Channel

This page intentionally left blank