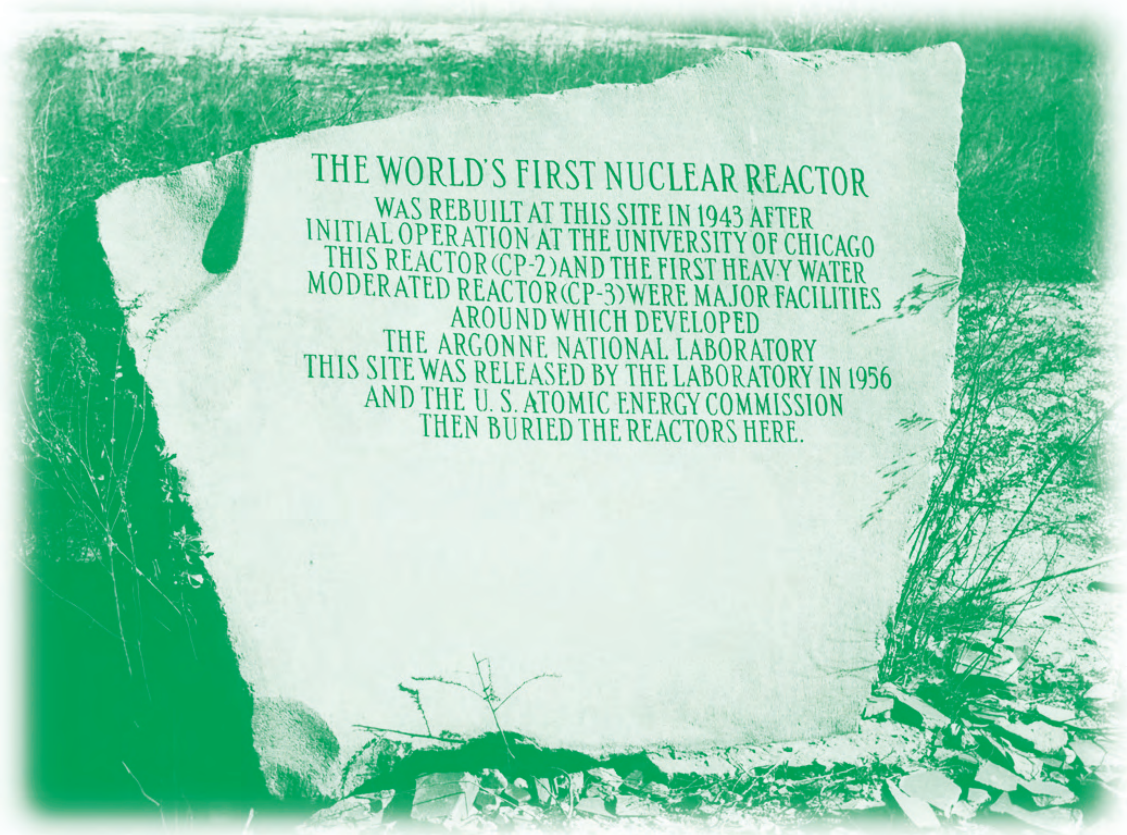


## Surveillance of Site A and Plot M Report for 2007

---

Environment, Safety, and Health/Quality Assurance Oversight Division



**About Argonne National Laboratory**

Argonne is a U.S. Department of Energy laboratory managed by UChicago Argonne, LLC under contract DE-AC02-06CH11357. The Laboratory's main facility is outside Chicago, at 9700 South Cass Avenue, Argonne, Illinois 60439. For information about Argonne, see [www.anl.gov](http://www.anl.gov).

**Availability of This Report**

This report is available, at no cost, at <http://www.osti.gov/bridge>. It is also available on paper to the U.S. Department of Energy and its contractors, for a processing fee, from:

U.S. Department of Energy  
Office of Scientific and Technical Information  
P.O. Box 62  
Oak Ridge, TN 37831-0062  
phone (865) 576-8401  
fax (865) 576-5728  
[reports@adonis.osti.gov](mailto:reports@adonis.osti.gov)

**Disclaimer**

This report was prepared as an account of work sponsored by an agency of the United States Government. Neither the United States Government nor any agency thereof, nor UChicago Argonne, LLC, nor any of their employees or officers, makes any warranty, express or implied, or assumes any legal liability or responsibility for the accuracy, completeness, or usefulness of any information, apparatus, product, or process disclosed, or represents that its use would not infringe privately owned rights. Reference herein to any specific commercial product, process, or service by trade name, trademark, manufacturer, or otherwise, does not necessarily constitute or imply its endorsement, recommendation, or favoring by the United States Government or any agency thereof. The views and opinions of document authors expressed herein do not necessarily state or reflect those of the United States Government or any agency thereof.

# Surveillance of Site A and Plot M Report for 2007

---

by  
Norbert W. Golchert  
Environment, Safety, and Health/Quality Assurance Oversight Division, Argonne National Laboratory

April 2008



UChicago ►  
Argonne<sub>LLC</sub>



## PREFACE

This report is prepared for the U. S. Department of Energy (DOE) by ESH/QA Oversight (EQO) at Argonne National Laboratory (Argonne). The results of the environmental monitoring program at Site A and Plot M and an assessment of the impact of the site on the environment and the public are presented in this publication. Funding to support this program was provided by the Office of Legacy Management (LM) through the U. S. Department of Energy Grand Junction Office. This report and some earlier issues of the annual reports are available on the Internet at <http://www.anl.gov/ESH/sitea>.

Most of the tables and some of the figures were prepared by Jennifer Tucker of the Data Management Team. Sample collection and field measurements were conducted under the direction of Larry Moos of the EQO Environmental Monitoring and Surveillance Group by:

Tony Fracaro

Jenny Palasik

Rob Piorkowski

The analytical separations and measurements were conducted under the direction of Theresa Davis of the EQO Analytical Services Group by:

Tim Branch

Alan Demkovich

Anil Thakkar

Jianhua Zhang

This manuscript was typed and prepared for publication by Terri Schneider (EQO).

This page intentionally left blank

# TABLE OF CONTENTS

	<u>Page</u>
<b>PREFACE</b> .....	iii
<b>TABLE OF CONTENTS</b> .....	v
<b>LIST OF TABLES</b> .....	vii
<b>LIST OF FIGURES</b> .....	ix
<b>ABSTRACT</b> .....	xi
<b>1.0 INTRODUCTION</b> .....	1-1
1.1 Site History .....	1-1
1.2 Site Characteristics .....	1-5
<b>2.0 SUMMARY</b> .....	2-1
<b>3.0 MONITORING PROGRAM</b> .....	3-1
3.1 Surface Water.....	3-2
3.2 Subsurface Water .....	3-5
3.2.1 Monitoring Wells - Plot M.....	3-5
3.2.2 Monitoring Wells - Site A .....	3-10
3.2.3 Dolomite Well Water .....	3-10
3.2.4 Drinking Water Wells.....	3-17
<b>4.0 SUMMARY OF POTENTIAL RADIATION DOSE AND RISK ESTIMATES</b> .....	4-1
4.1 Dose Estimates .....	4-1
4.2 Risk Estimates .....	4-1
<b>5.0 REFERENCES</b> .....	5-1
<b>6.0 APPENDICES</b> .....	6-1
6.1 Quality Assurance Program .....	6-1
6.2 Applicable Standards .....	6-2
6.3 Analytical Methods.....	6-2
6.4 Distribution for ANL-08/04.....	6-3

## LIST OF TABLES

<u>No.</u>	<u>Title</u>	<u>Page</u>
3.1	Hydrogen-3 Content of Stream Next to Plot M, 2007 .....	3-4
3.2	Hydrogen-3 Content of Site A Area Ponds, 2007 .....	3-4
3.3	Hydrogen-3 in Plot M Monitoring Well Water, 2007 .....	3-7
3.4	Water Level Measurements in Monitoring Wells Near Plot M, 2007 .....	3-8
3.5	Strontium-90 Content in Monitoring Well Water Samples Near Plot M, 2007 .....	3-9
3.6	Hydrogen-3 in Site A Monitoring Well Water, 2007 .....	3-12
3.7	Water Level Measurements in Monitoring Wells Near Site A, 2007 .....	3-12
3.8	Strontium-90 Content of Monitoring Well Water Samples Near Site A, 2007 .....	3-13
3.9	Hydrogen-3 in Dolomite Wells, 2007 .....	3-15
3.10	Water Level Measurements in Dolomite Wells, 2007 .....	3-16
3.11	Hydrogen-3 Content of Wells Near Site A/Plot M, 2007 .....	3-18
3.12	Annual Maximum and Average Hydrogen-3 Concentrations in the Red Gate Woods Wells .....	3-19
4.1	Dose From Continuous Exposure to Hydrogen-3 at Selected Locations, 2007 .....	4-2
4.2	Estimates of Hydrogen-3 Exposures to a Casual Visitor to Plot M, 2007 .....	4-2
4.3	Annual Average Dose Equivalent in the U. S. Population .....	4-3
4.4	Risk of Death From Various Events .....	4-5

## LIST OF FIGURES

<u>No.</u>	<u>Title</u>	<u>Page</u>
1.1	Location of Palos Forest Preserve on Chicago-Area Map .....	1-2
1.2	Palos Forest Preserve Showing Location of Site A/Plot M Dolomite Holes and Picnic Wells.....	1-3
3.1	Surface Water Sampling Locations Near Plot M .....	3-3
3.2	Map of Plot M Palos Site Showing Topography, Intermittent Stream, and Monitoring Well Locations .....	3-6
3.3	Monitoring Wells at Site A .....	3-11
3.4	Locations of Dolomite Wells North of Plot M.....	3-14
3.5	Hydrogen-3 Concentrations in Opposite Red Gate Woods (#5159) and Red Gate Woods North (#5160) Wells From 1995 Through 2007 .....	3-20



This page intentionally left blank

# SURVEILLANCE OF SITE A AND PLOT M

Report for 2007

by

Norbert W. Golchert

## ABSTRACT

The results of the environmental surveillance program conducted at Site A/Plot M in the Palos Forest Preserve area for Calendar Year 2007 are presented. Based on the results of the 1976-1978 radiological characterization of the site, a determination was made that a surveillance program be established. The characterization study determined that very low levels of hydrogen-3 (as tritiated water) had migrated from the burial ground and were present in two nearby hand-pumped picnic wells. The current surveillance program began in 1980 and consists of sample collection and analysis of surface and subsurface water. The results of the analyses are used to 1) monitor the migration pathway of water from the burial ground (Plot M) to the hand-pumped picnic wells, 2) establish if other buried radionuclides have migrated, and 3) monitor the presence of radioactive materials in the environment of the area. Hydrogen-3 in the Red Gate Woods picnic wells was still detected this year, but the average and maximum concentrations were significantly less than found earlier. Hydrogen-3 continues to be detected in a number of wells, boreholes, dolomite holes, and a surface stream. Analyses since 1984 have indicated the presence of low levels of strontium-90 in water from a number of boreholes next to Plot M. The results of the surveillance program continue to indicate that the radioactivity remaining at Site A/Plot M does not endanger the health or safety of the public visiting the site, using the picnic area, or living in the vicinity.

This page intentionally left blank

## 1.0 INTRODUCTION

### 1.1 Site History

This report presents and discusses the surveillance data obtained during 2007. The surveillance program is the ongoing activity that resulted from the 1976-1978 radiological characterization of the former site of Argonne National Laboratory and its predecessor, the University of Chicago's Metallurgical Laboratory. This site was part of the World War II Manhattan Engineer District Project and was located in the Palos Forest Preserve southwest of Chicago, IL. The Laboratory used two locations in the Palos Forest Preserve: Site A, a 19-acre area that contained experimental laboratories and nuclear reactor facilities; and Plot M, a 150 ft x 140 ft area used for the burial of radioactive waste. These locations are shown in Figure 1.1 and Figure 1.2. Previous comprehensive reports on this subject<sup>1,2</sup> provide additional detail and illustrations on sampling locations and provide descriptive material along with the results through 1981. There are annual reports for 1982 through 2006.<sup>3-27</sup> While earlier data will not be repeated in this report, reference is made to some of the results.

Operations at Site A began in 1943 and ceased in 1954. Among the research programs carried out at Site A were reactor physics studies, fission product separations, hydrogen-3 recovery from irradiated lithium, and work related to the metabolism of radionuclides in laboratory animals. Radioactive waste and radioactively-contaminated laboratory articles from these studies were buried at Plot M. At the termination of the programs, the reactor fuel and heavy water, used for neutron moderation and reactor cooling, were removed and shipped to Oak Ridge National Laboratory. The biological shield for the CP-3 reactor located at Site A, together with various pipes, valves, and building debris, was buried in place in 1956.

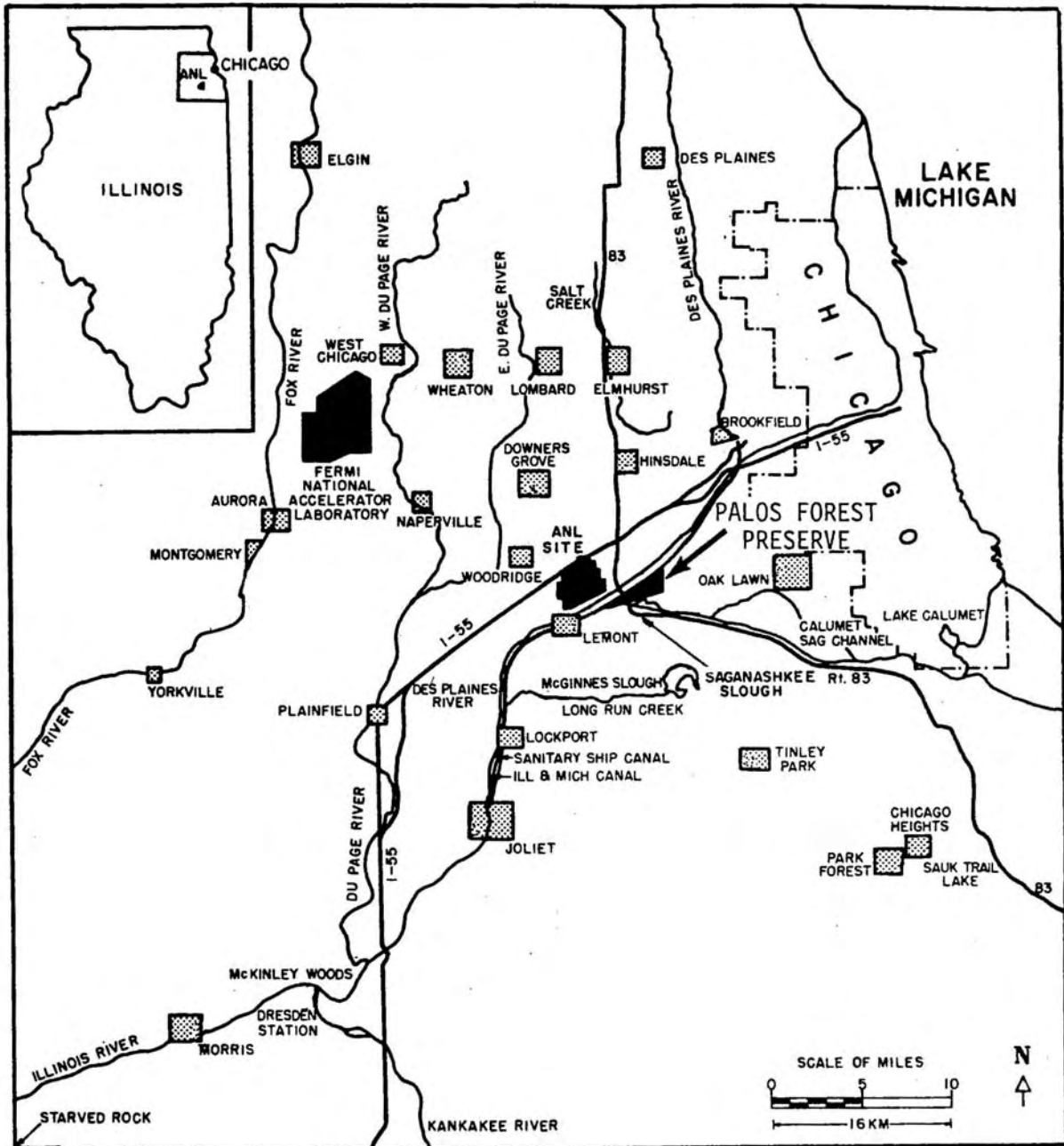


Figure 1.1 Location of Palos Forest Preserve on Chicago-Area Map

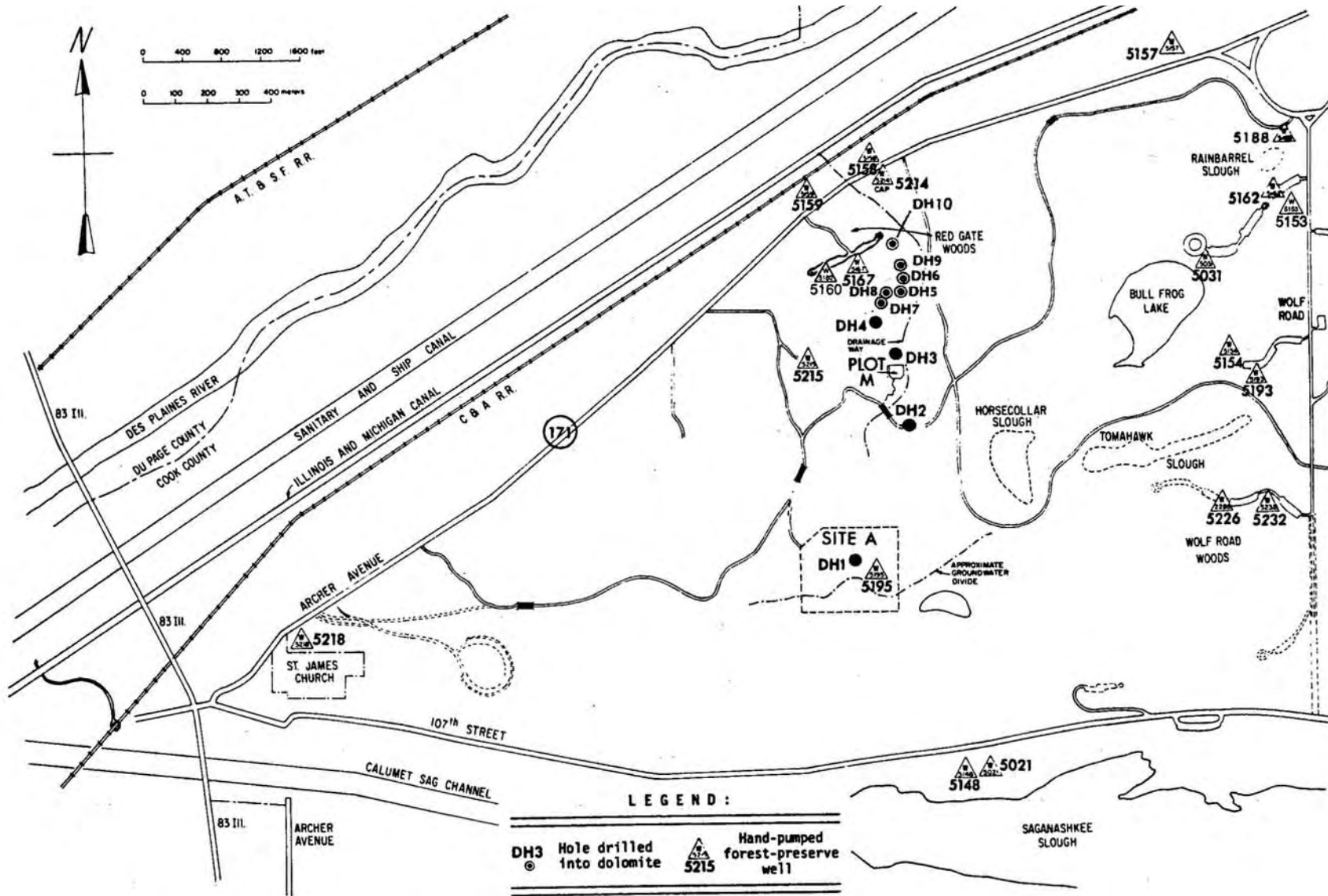


Figure 1.2 Palos Forest Preserve Showing Location of Site A/Plot M Dolomite Holes and Picnic Wells

Burial of radioactive waste at Plot M began in 1944 and was discontinued in 1949. Waste was buried in six-foot deep trenches and covered with soil until 1948, after which burial took place in steel bins. The steel bins were removed in 1949 and sent to Oak Ridge National Laboratory for disposal, but the waste buried in trenches was allowed to remain in place. Concrete sidewalls, eight feet deep, were poured around the perimeter of the burial area and a one-foot thick reinforced concrete slab was poured over the top. The concrete slab was covered with soil and seeded with grass. Both the Site A and Plot M areas were decommissioned in 1956.

In 1973, elevated levels of hydrogen-3 (as tritiated water) were detected by Argonne in two nearby hand-pumped picnic wells (#5167 and #5159) and the hydrogen-3 was found to be migrating from the burial plot into the surrounding soil and aquifers. As a result, a radiological survey of the entire Palos Forest Preserve site was conducted by Argonne in 1976 with special emphasis on the Site A and Plot M areas.<sup>1</sup>

In 1990, elevated levels of radioactivity were discovered outside the original developed area. An expanded characterization and remediation program was conducted by DOE to remove residual radioactivity and document the remediation of the area. This was completed in 1997.

The terminology used in previous reports is continued in this report. A hole drilled and completed into the glacial drift is called a borehole. Some boreholes were cased and screened to form monitoring wells. Water from such wells is called groundwater. Test wells drilled into the dolomite bedrock are called dolomite holes or deep holes. Water from such wells is called dolomite water. The hand-pumped drinking water wells, which are completed into or close to the dolomite bedrock, are called water wells or picnic wells. They are identified by a location name or well number. Except for well #5160, these were in existence before the radiological and hydrological monitoring of the area was begun.

The results of radioactivity measurements are expressed in this report in terms of picocuries per liter (pCi/L) and nanocuries per liter (nCi/L) for water samples. Radiation effective dose equivalent calculations are reported in units of millirem (mrem) or millirem per year (mrem/y). The use of the term dose throughout this report means effective dose equivalent. Other abbreviations of units are defined in the text.

## 1.2 Site Characteristics

Geologically, Plot M is constructed on a moraine upland which is dissected by two valleys, the Des Plaines River valley to the north and the Calumet Sag valley to the south. The upland is characterized by rolling terrain with poorly developed drainage. Streams are intermittent and drain internally or flow to one of the valleys. The area is underlain by glacial drift, dolomite, and other sedimentary rocks. The uppermost bedrock is Silurian dolomite, into which both the picnic wells and some of the monitoring wells are placed, as described in the text. The dolomite bedrock is about 200 feet thick. The overlying glacial drift has a thickness that ranges from 165 feet at Site A to zero at the Des Plaines River and Calumet Sag Canal, and some of the monitoring wells terminate in this layer. The depth to bedrock at Plot M is about 130 feet.

Hydrologically, the surface water consists of ponds and intermittent streams. When there is sufficient water, the intermittent stream that drains Plot M flows from the highest point near Site A, past Plot M, then continues near the Red Gate Woods well (# 5160 in Figure 1.2) and discharges into the Illinois and Michigan (I&M) Canal. The groundwater in the glacial drift and dolomite forms two distinct flow systems. The flow in the drift is controlled principally by topography. The flow in the dolomite, which is recharged by groundwater from the glacial drift, is controlled by two discharge areas, the Des Plaines River to the north and the Calumet Sag Canal to the south. Water usage in the area is confined to the hand-pumped picnic wells.



The climate is that of the upper Mississippi valley, as moderated by Lake Michigan, and is characterized by cold winters and hot summers. Precipitation averages about 36 inches annually. The largest rainfalls occur between April and September. The average monthly temperature ranges from 21°F in January to 73°F in July. Approximately 8.9 million people reside within 50 miles of the site; the population within a five-mile radius is about 150,000. The only portion of the Palos Forest Preserve in the immediate area of Plot M and Site A that is developed for public use is the Red Gate Woods picnic area (Figure 1.2), although small numbers of individuals use the more remote areas of the Palos Forest Preserve.

## 2.0 SUMMARY

In early 2004, an evaluation was conducted to determine the optimum monitoring program for Site A/Plot M. An evaluation of over 20 years of monitoring data indicated significant reduction of hydrogen-3 and strontium-90 concentrations in surface water and groundwater. DOE-LM staff worked closely with the property owner, representatives from the state of Illinois, Argonne National Laboratory, local stakeholders, and the DOE Chicago Operations Office to establish an environmental monitoring program that focuses on pathways and locations that provide the most information. A number of sampling locations were deleted, sampling frequency was changed, and the analyses changed to target hydrogen-3 and strontium-90 only. The streamlined program was implemented in early 2004 and this program was followed in 2007. The results are summarized in this report.

Surface water samples collected in 2007 from the stream that flows around Plot M showed the same hydrogen-3 concentration pattern seen in the past. Concentrations were at the ambient level of less than 0.1 nCi/L upstream of the Plot, increased up to 33.8 nCi/L at the seep adjacent to the Plot, then decreased further downstream.

The hydrogen-3 concentrations in the borehole and dolomite hole water follow a pattern consistent with that observed in the past. The hydrogen-3 concentration was highest in those boreholes nearest Plot M and downgradient of the Plot. Water from four of eight boreholes analyzed for strontium-90 contained concentrations greater than the detection limit of 0.25 pCi/L. The elevated strontium-90 levels (up to 2.70 pCi/L) found in some boreholes is probably due to migration of strontium-90 before the Plot was capped. Strontium-90 is a relatively mobile radionuclide and its presence in the borehole water is not unexpected. The strontium-90 results are consistent with those measured in the past.

Sampling of the forest preserve picnic wells shown in Figure 1.2 continued. In July 1988, the Red Gate Woods North Well (#5160) was installed as a replacement drinking water supply for the Red Gate Woods Well (#5167). The maximum and average hydrogen-3 concentrations of well #5160 in 2007 were 1.45 nCi/L and 1.28 nCi/L, respectively. The well opposite the entrance to Red Gate Woods (#5159) had a maximum hydrogen-3 concentration of 0.66 nCi/L and an annual average concentration of 0.33 nCi/L. The previous pattern of relatively higher hydrogen-3 concentrations in the winter and relatively lower concentrations (less than the detection limit of 0.1 nCi/L) in the summer is not readily apparent for the wells due to the overall low measured hydrogen-3 concentrations. For the calculation of annual averages, all data, as measured, were retained in the database and used to compute the average.

If water equal to the Red Gate Woods North Well (#5160) with an average hydrogen-3 concentration of 1.28 nCi/L was the sole source of water for an individual, the annual dose from hydrogen-3 would be 0.059 mrem using the DOE dose conversion factor<sup>28</sup>. Consumption of one liter of this water would produce a dose of  $7 \times 10^{-5}$  mrem. Although the U. S. Environmental Protection Agency (EPA) drinking water regulations<sup>29</sup> are not applicable because the picnic wells do not meet the EPA definition of a public drinking water supply, this concentration is about 5% of the EPA annual limit of 20 nCi/L. Table 4.3 provides a relative comparison of this calculated dose to natural and other sources of radiation.

The results of this program show that the radioactivity remaining at Site A, Plot M, and the Red Gate Woods area does not endanger the health or safety of the public visiting the site or those living in the vicinity. The potential radiation doses are very low compared to the relevant standards.

### 3.0 MONITORING PROGRAM

The monitoring program is designed to assess the current status of past releases of hydrogen-3 and strontium-90 from the site and to monitor elevated hydrogen-3 (as tritiated water) concentrations previously detected in some of the picnic wells in the Palos Forest Preserve. This is accomplished by analyzing water from wells, deep holes, and surface water in the area. Samples are collected with a frequency ranging from quarterly to annually, depending on past results and proximity to Plot M. During 2007, 143 samples were collected, 189 analyses were performed, and 92 field measurements were conducted. Since 2004, the monitoring program has been reduced in scope to focus on areas that have residual radioactivity. For the most part, individual results are presented in the tables and compared to control, off-site, or upstream sample results. Where applicable, results are compared to the U. S. Department of Energy Radiation Protection Standard of 100 mrem/y.<sup>28</sup> The Site A/Plot M program follows the guidance for monitoring at DOE facilities.<sup>30</sup> Although it is recognized that Site A/Plot M is not a DOE facility, the same monitoring principles are applicable to this site.

The uncertainties associated with individual concentrations given in the tables are the statistical counting errors at the 95% confidence level. Because of the amount of hydrogen-3 data presented in a few tables, the uncertainty values are not included. In such cases, the following typical uncertainties apply:

<u>Concentration (nCi/L)</u>	<u>Uncertainty (% of Conc.)</u>
0.1-1.0	40-5%
1-10	5-1%
> 10	1%

The detection limit for the measurement of hydrogen-3 in water in the Argonne analytical laboratory is 0.1 nCi/L.

### 3.1 Surface Water

Quarterly sets of water samples were scheduled during 2007 from the stream that flows around Plot M at four of the nine former locations. The stream was dry the entire fourth quarter. The sampling locations are shown in Figure 3.2. The three sets of samples were analyzed for hydrogen-3 and the results are shown in Table 3.1. The same concentration pattern in the water flowing around Plot M was observed this year as in the past. Concentrations were below the detection limits upstream of the Plot (Location 1); measurable concentrations of hydrogen-3 were measured in the seep water that leached out of the burial site (Location 6); and measurable but low concentrations were found downstream of the Plot (Locations 7 & 8). In general the hydrogen-3 concentrations vary from year to year and are dependent on the amount of precipitation.

Using the methodology prescribed in the DOE guidance,<sup>28</sup> the committed effective dose equivalent from consumption of water can be calculated. The total quantity of an ingested radionuclide is obtained by multiplying the water concentration by the general public water ingestion rate of 730 L/y.<sup>31</sup> This annual intake is then multiplied by the 50-year Committed Effective Dose Equivalent (CEDE) factor.<sup>32</sup> The CEDE for hydrogen-3 in water is  $6.3 \times 10^{-5}$  rem/ $\mu$ Ci. If a hypothetical individual used water with the same hydrogen-3 concentration as found in the seep (Location #6) as his sole source of water, the annual dose based on the maximum 2007 concentration of 33.8 nCi/L would be about 1.6 mrem/y and the dose based on the annual average seep concentration of 20.2 nCi/L would be 0.9 mrem/y. The DOE dose limit for the public is 100 mrem/y.

To monitor any potential surface runoff in other areas, samples were collected quarterly from five surface water bodies in the vicinity of Site A. They are the pond northwest of Site A; the pond southeast of Site A; Horse Collar Slough; Tomahawk Slough; and Bull Frog Lake. Most of these locations can be identified in Figure 1.2. The samples were analyzed for hydrogen-3 and the results are collected in Table 3.2. All hydrogen-3 concentrations were below or close to the detection limit of 0.1 nCi/L.

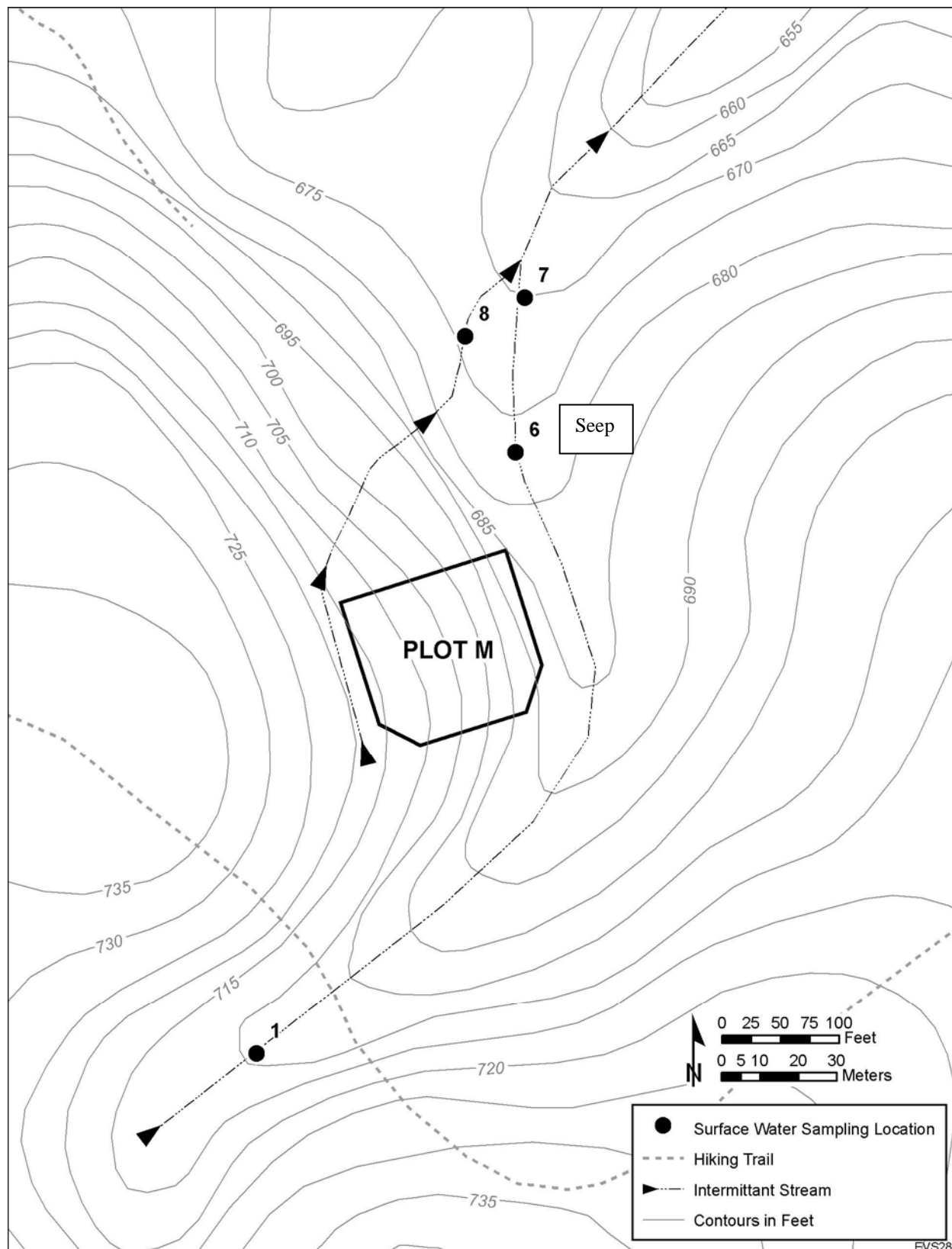


Figure 3.1 Surface Water Sampling Locations Near Plot M

**Table 3.1**

Hydrogen-3 Content of Stream Next to Plot M, 2007

(Concentrations in nCi/L)

Location Number*	Date Collected			
	January 5	April 12	August 24	November
1	< 0.1	0.1	< 0.1	Dry
6 (Seep)	19.9	33.8	6.8	Dry
7	5.5	4.5	2.2	Dry
8	2.1	1.8	0.4	Dry

\* See Figure 3.1

**Table 3.2**

Hydrogen-3 Content of Site A Area Ponds, 2007

(Concentrations in nCi/L)

Location*	Date Collected			
	February 14	May 31	August 29	November 27
NW Site A	0.12	0.11	< 0.1	0.11
SE Site A	< 0.1	< 0.1	< 0.1	< 0.1
Bull Frog Lake	< 0.1	0.13	< 0.1	< 0.1
Horsecollar Slough	< 0.1	< 0.1	< 0.1	< 0.1
Tomahawk Slough	< 0.1	< 0.1	< 0.1	0.12

\* See Figure 1.2

## 3.2 Subsurface Water

### 3.2.1 Monitoring Wells - Plot M

A number of the boreholes drilled in the Plot M area (Figure 3.2) cased with plastic pipe and screens, were installed to serve as monitoring wells within the glacial drift. Two wells were drilled at a 45° angle under the waste. Water samples were collected and water level measurements were made in nine of the Plot M monitoring wells approximately quarterly, weather permitting. Each well was emptied of water and allowed to recharge before sampling. The shallow wells responded to the spring precipitation as indicated by an increase in water levels followed by a drop during summer and fall when moisture was used for plant growth. The water levels in the deeper drift wells, generally deeper than 100 ft., were relatively constant throughout the year.

All the water samples were analyzed for hydrogen-3 and the results are collected in Table 3.3. The hydrogen-3 concentrations varied widely as in past years. The measured water levels in the vertical wells are in Table 3.4. Since the measurement of the water levels is made relative to a benchmark at the top of the well casing, a decrease in numerical value indicates a rise in water level. Water levels were not recorded on the two slanted wells. Higher hydrogen-3 concentrations in groundwater correlate with higher hydrogen-3 concentration in split-spoon soil cores obtained when the wells were constructed. In general, the magnitudes of the hydrogen-3 concentrations are similar to those observed over the past several years.



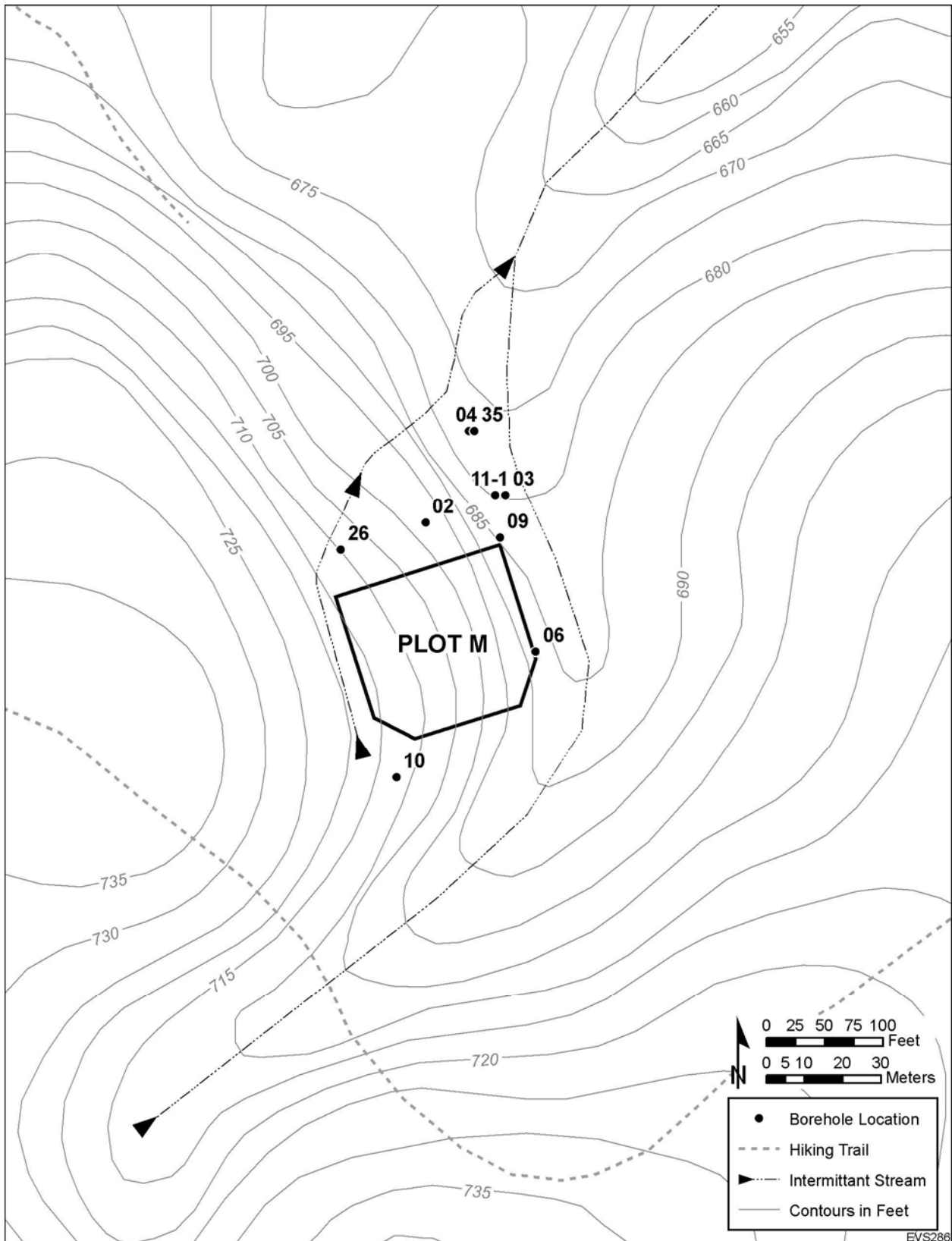


Figure 3.2 Map of Plot M Palos Site Showing Topography, Intermittent Stream, and Monitoring Well Locations

**Table 3.3**

Hydrogen-3 in Plot M Monitoring Well Water, 2007

(Concentrations in nCi/L)

Well Number	Depth (ft.)	Date Collected			
		March 12	May 22	August 6	October 18
2	39.41	6.1	8.7	9.8	58.1
3	40.00	482.4	482.0	539.6	513.5
4	36.05	498.6	510.0	503.1	482.0
6	40.30	27.7	30.2	41.2	44.2
9	40.00*	1462.0	DRY	DRY	DRY
10	40.00*	66.3	6.8	209.3	144.1
11	39.30	140.0	130.0	141.8	163.0
26	60.65	3.2	1.5	320.5	322.5
35	105.50	322.0	224.0	279.6	321.9

\* Slant hole drilled at 45° to a depth of 40 ft. below the surface.

**Table 3.4**

Water Level Measurements in Monitoring Wells Near Plot M, 2007

(Units of feet below the benchmark at the top of the well)

Well Number	Depth (ft.)	Date Measured			
		March 12	May 22	August 6	October 18
2	39.41	24.40	24.02	30.02	30.03
3	40.00	31.60	29.02	34.09	34.71
4	36.05	17.63	14.65	20.84	21.55
6	40.30	31.38	29.56	34.19	34.79
11	39.30	20.79	24.06	28.32	28.79
26	60.65	48.24	44.98	46.68	47.77
35	105.50	94.57	93.99	94.01	93.58

Groundwater from the monitoring wells was analyzed twice for strontium-90. Sets of large volume water samples were collected to obtain greater sensitivity in the analysis. One set of samples was collected on May 22, 2007, and another set was collected October 18, 2007. Samples were collected from all wells that yielded sufficient water for analysis. The samples were analyzed for strontium-90 and the results are shown in Table 3.5. Strontium-90 concentrations greater than the detection limit of 0.25 pCi/L were found in four of the eight sampled wells. Levels above 0.25 pCi/L would not be expected in this water due to fallout, and no other source is known, thus the source is likely to be waste in Plot M. The highest strontium-90 concentration in 2007 was 2.70 pCi/L in water from Well #11. The results are less than the State of Illinois Class 1 Ground Water Quality Standard value of 8 pCi/L. Historically, the highest concentration was found in 1991, 10.7 pCi/L in Well #11 (68 feet). In the past, Well #6, which is between the buried waste and the stream that flows around Plot M, showed measurable strontium-90 concentrations. The data suggest that small but measurable amounts of strontium-90 have migrated from the waste into the surrounding glacial drift.

**Table 3.5**  
Strontium-90 Content in Monitoring Well Water Samples Near Plot M, 2007  
(Concentrations in pCi/L)

Well Number*	Depth (ft.)	May 22	October 18
2	39.41	< 0.25	0.26
3	40.00	< 0.25	< 0.25
4	36.05	< 0.25	< 0.25
6	40.30	1.29	0.69
9	40.00**	DRY	DRY
10	40.00**	< 0.25	< 0.25
11	39.30	2.70	2.39
26	60.65	0.93	< 0.25
35	105.50	< 0.25	< 0.25

\* See Figure 3.2

\*\* Slant hole

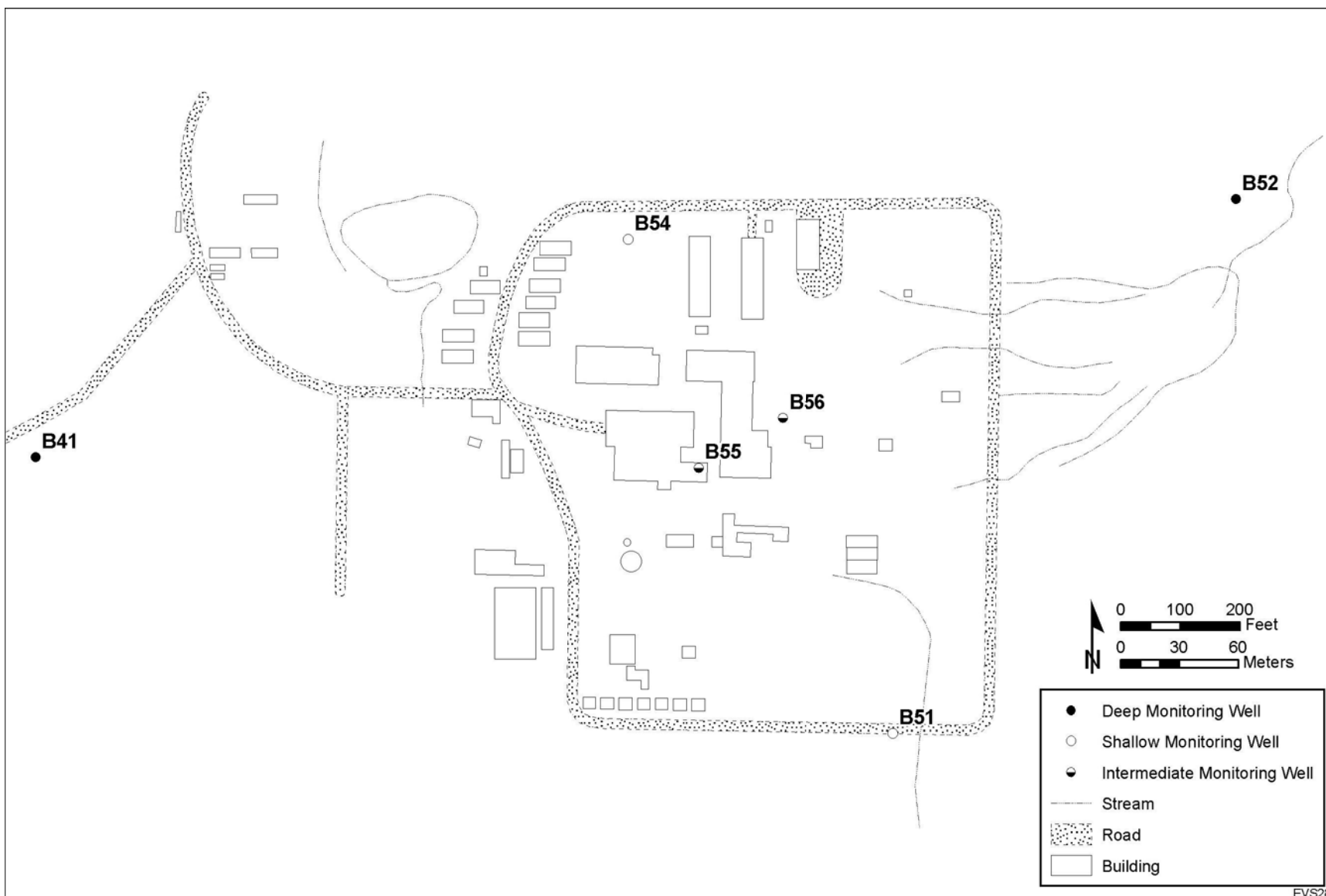
### 3.2.2 Monitoring Wells - Site A

In late 1993, four monitoring wells (BH-41, BH-42, BH-43, and BH-44), were installed in the glacial drift at Site A to improve Site A perimeter monitoring. In 1994, 12 monitoring wells were constructed at Site A to support the expanded characterization of this area. With the characterization study completed in the spring of 1995, the wells were transferred to the monitoring program for continued use as part of the surveillance network. These wells are shown in Figure 3.3. Dedicated pumps and associated equipment were installed in July of 1995. In July 2002, Well #43 was closed because it was continually dry. The monitoring program evaluation in 2004 identified six of these wells that required ongoing monitoring as shown in Figure 3.3. Samples from six of these monitoring wells are collected quarterly and analyzed for hydrogen-3, and semi-annually for strontium-90.

Hydrogen-3 results for the six Site A monitoring well samples are shown in Table 3.6. Water levels were also measured in these monitoring wells and these measurements appear in Table 3.7. The hydrogen-3 concentrations were all low and the pattern throughout the year was consistent. The elevated hydrogen-3 levels in Well #41 are probably from the site landfill, while the hydrogen-3 in Well #55 and Well #56 most likely is from the buried CP-3 biological shield. The hydrogen-3 concentrations at Site A were several orders of magnitude lower than Plot M. The results of the strontium-90 analyses are shown in Table 3.8. The elevated strontium-90 results appear to track with elevated hydrogen-3 results. For example, Wells #55 and #56 had measurable levels of hydrogen-3 and strontium-90 throughout the year.

### 3.2.3 Dolomite Well Water

At the present time, ten wells are cased into the dolomite zone to monitor the movement of any radionuclides in this aquifer. Most of the dolomite wells are located north of Plot M and east of the Red Gate Woods North Well (#5160), as shown in Figure 1.2 and/or Figure 3.4.



EVS287

Figure 3.3 Monitoring Wells at Site A

**Table 3.6**

Hydrogen-3 in Site A Monitoring Well Water, 2007

(Concentrations in nCi/L)

Well Number	Depth (ft.)	Date Collected			
		March 12	June 7	August 29	October 29
41	25.83	< 0.1	< 0.1	0.1	0.2
51	116.40	< 0.1	< 0.1	< 0.1	< 0.1
52	165.00	< 0.1	< 0.1	< 0.1	< 0.1
54	63.40	0.3	< 0.1	< 0.1	< 0.1
55	87.20	3.3	3.0	3.6	3.3
56	102.40	3.1	2.7	2.8	2.4

**Table 3.7**

Water Level Measurements in Monitoring Well Near Site A, 2007

(Units in feet below the benchmark at the top of the well)

Well Number	Depth to Bottom (ft.)	Date Measured			
		March 12	June 7	August 29	October 29
41	25.83	0.70	5.08	8.04	12.10
51	116.40	104.43	104.08	104.35	104.81
52	165.00	131.08	131.33	131.70	133.14
54	63.40	55.53	52.93	55.20	56.72
55	87.20	55.12	50.39	64.85	78.20
56	102.40	88.32	86.31	86.84	87.72

**Table 3.8**

Strontium-90 Content of Monitoring Well Water Samples Near Site A, 2007

(Concentrations in pCi/L)

Well Number	Depth (ft.)	Date Collected	
		March 12	August 29
41	25.83	< 0.25	< 0.25
51	116.40	< 0.25	< 0.25
52	165.00	< 0.25	< 0.25
54	63.40	< 0.25	< 0.25
55	87.20	3.70	2.75
56	102.40	2.57	2.61

Water was collected from the dolomite wells quarterly. All samples were analyzed for hydrogen-3 and the results are in Table 3.9. Water levels were also measured in the dolomite wells and these measurements are in Table 3.10.

The results of the hydrogen-3 analyses of the dolomite wells are consistent with concentrations measured in the past. All of the dolomite wells had measurable hydrogen-3 concentrations. The highest hydrogen-3 levels are in the eight dolomite holes, D9 to D15 and D17, which are the furthest north and near the surface stream that flows next to Plot M (see Section 3.2). The distribution of hydrogen-3 in these wells is supported by the 1979 USGS interpretation<sup>33</sup> that a hydrogen-3 plume underlies the stream. The plume has spread downward as well as downgradient resulting in the current configuration of the hydrogen-3 concentrations in the dolomite. The other dolomite well with elevated hydrogen-3 is D3, which is immediately downgradient from Plot M. Previous analyses of soil core samples indicated the presence of hydrogen-3 down to the drift-dolomite interface at D3.



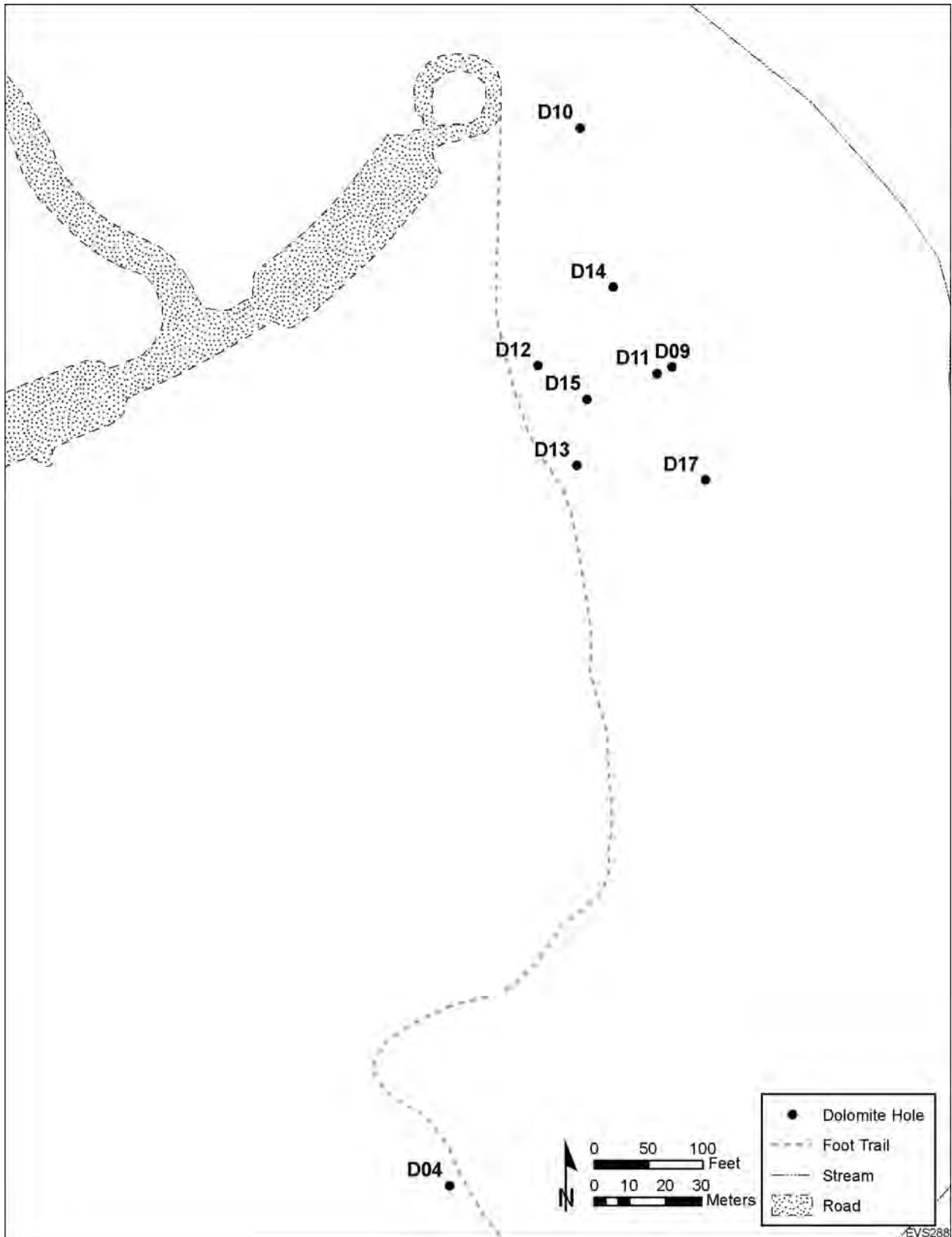


Figure 3.4 Locations of Dolomite Wells North of Plot M

**Table 3.9**

Hydrogen-3 in Dolomite Wells, 2007

(Concentrations in nCi/L)

Dolomite Well Number	Date Collected			
	March 5	May 15	August 6	October 24
D3	1.2	1.1	1.2	1.1
D4	0.2	0.3	0.2	0.3
D9	1.2	1.1	0.3	0.4
D10	1.4	1.4	1.3	1.3
D11	1.8	1.9	1.7	1.7
D12	2.5	2.4	2.4	2.3
D13	1.2	1.3	1.2	1.2
D14	1.8	1.8	1.7	1.7
D15	2.1	2.1	2.0	2.1
D17	0.4	0.4	0.4	0.3

**Table 3.10**

Water Level Measurements in Dolomite Wells, 2007

(Units in feet below the benchmark at the top of the well)

Dolomite Well Number	Date Measured			
	March 5	May 15	August 6	October 24
D3	98.10	97.14	98.94	99.36
D4	93.28	92.30	94.13	94.51
D9	72.60	71.13	72.35	72.78
D10	64.05	63.15	65.32	65.41
D11	75.72	74.81	77.00	77.09
D12	76.91	75.99	78.17	78.25
D13	77.73	76.85	79.05	79.11
D14	71.91	70.98	73.18	73.27
D15	79.51	78.62	80.83	80.89
D17	74.74	73.83	76.04	76.08

### 3.2.4 Drinking Water Wells

Sampling was conducted quarterly at two forest preserve picnic wells (#5160 and #5159) located north of Plot M and shown in Figure 1.2. All the samples were analyzed for hydrogen-3 and the results are listed in Table 3.11. The Red Gate Woods North Well (#5160) has not been available to the public since 1999 because of high fecal coliform levels. The hydrogen-3 concentrations in the wells have decreased to the level where the earlier pattern of high concentrations in the winter and low concentrations in the summer is not readily detectable. The maximum and average hydrogen-3 concentrations since 1996 for wells #5160, and #5159 are presented in Table 3.12. The hydrogen-3 concentration over the past few years is illustrated in Figure 3.5, which is a plot of the hydrogen-3 concentrations in wells #5160 and #5159.

**Table 3.11**

Hydrogen-3 Content of Picnic Wells Near Site A/Plot M, 2007

(Concentrations in nCi/L)

Date Collected	Red Gate North 5160	Opposite Red Gate 5159
March 12	1.45	0.66
May 2	1.19	0.17
August 1	1.22	0.26
November 7	1.27	0.24
Average	1.28	0.33

**TABLE 3.12**Annual Maximum and Average Hydrogen-3 Concentrations  
in the Red Gate Woods Wells

(Concentrations in nCi/L)

Year	Red Gate Woods North (#5160)		Opposite Red Gate Woods (#5159)	
	Maximum	Annual Average	Maximum	Annual Average
1996	2.19	1.56	0.55	0.33
1997	1.26	1.00	1.13	0.35
1998	1.23	1.03	0.72	0.47
1999	1.22	1.07	2.14	0.45
2000	1.54	1.33	2.20	0.70
2001	1.59	1.49	0.27	0.16
2002	1.47	1.04	3.17	0.45
2003	1.78	1.06	1.49	0.43
2004	1.08	1.00	0.34	0.17
2005	1.01	0.95	0.34	0.19
2006	1.14	1.06	2.63	1.11
2007	1.45	1.28	0.66	0.33

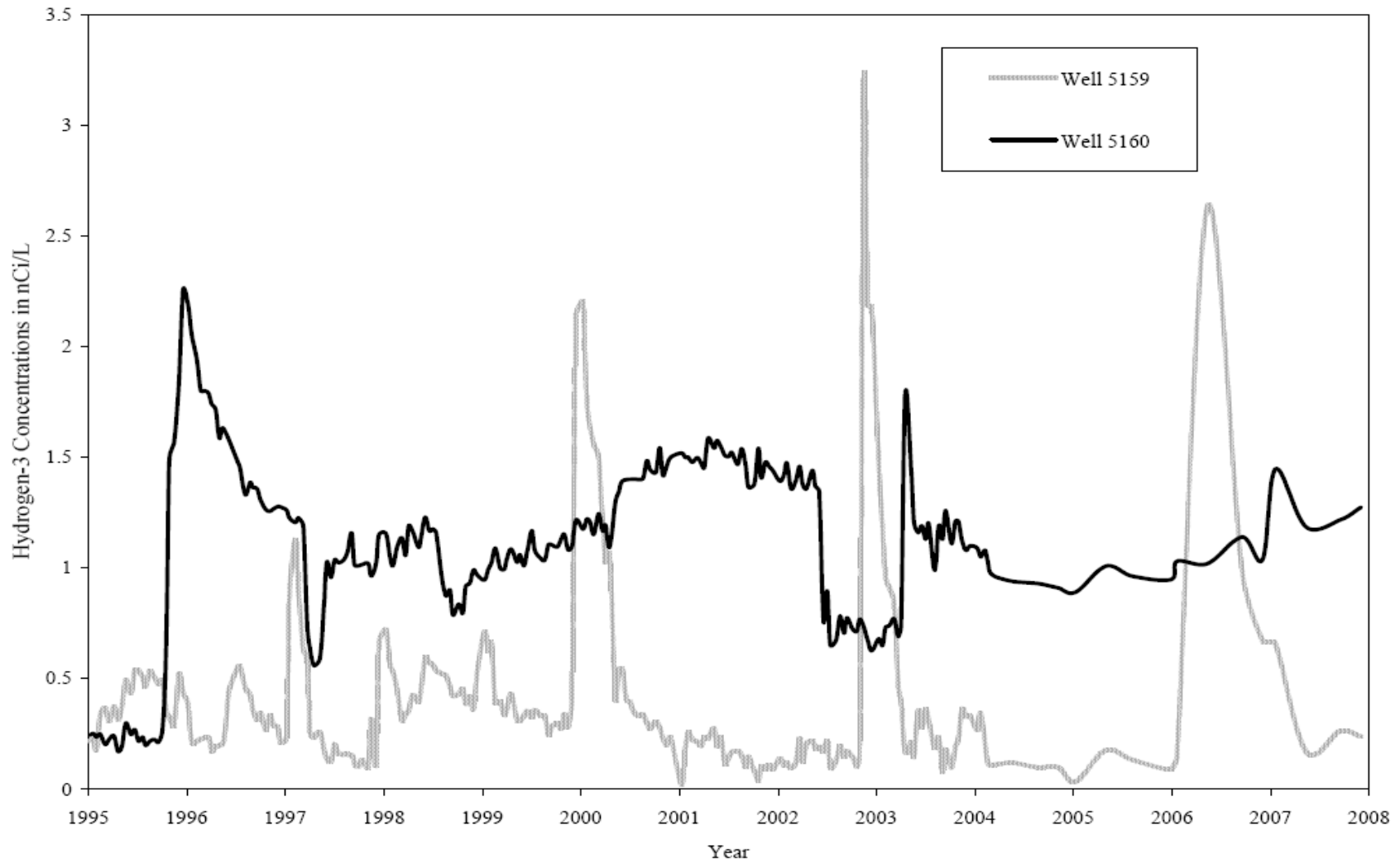


Figure 3.5 Hydrogen-3 Concentrations in Opposite Red Gate Woods (#5159) and Red Gate Woods North (#5160) Wells From 1995 Through 2007.

Before the Red Gate Woods Well (#5167) was sealed, the hydrogen-3 concentrations had decreased to below the detection limit. The hydrogen-3 concentrations in the well opposite Red Gate Woods (#5159) are more irregular and may be related to the amount of precipitation. The hydrogen-3 concentrations increased by almost a factor of ten in mid-November 2002 and then decreased to the prior levels by March 2003 and remained at about 0.3 nCi/L for the rest of the year. A similar spike occurred in April 2006. This pattern occurred before, in early 1996, to a lesser degree in early 1997 and early 1998, and was more pronounced in early 1999 and 2000. Between these spikes, the concentrations returned to their previous levels (See Figure 3.5). Hydrogen-3 in this well averaged 0.33 nCi/L for 2007.

The hydrogen-3 concentrations in Well #5160 have been relatively steady, ranging from 1.0 nCi/L to 1.5 nCi/L over the past several years. The exception being a decrease to about 0.7 nCi/L in June 2002 through April 2003. If water equal to the Red Gate Woods North well average hydrogen-3 concentration of 1.28 nCi/L was the sole source of water for an individual, the annual dose from the hydrogen-3 would be 0.059 mrem. If an individual consumed one liter of this water, the dose would be  $7 \times 10^{-5}$  mrem.



This page intentionally left blank

## **4.0 SUMMARY OF POTENTIAL RADIATION DOSE AND RISK ESTIMATES**

### **4.1 Dose Estimates**

The dose to an individual from drinking water containing radionuclides associated with Plot M can be estimated employing the DOE methodology. If a hypothetical individual were exposed continuously to hydrogen-3 at various locations near Plot M, the dose could be estimated. Assuming a person drank water from the seep (Location #6), or water from well #5160, the hypothetical doses from exposure for all of 2007 at the maximum and annual average concentrations were estimated and shown in Table 4.1. This scenario assumes that the individual's sole source of water is at the identified location.

A more meaningful estimation is for the occasional visitor to the Plot M area. Assuming a visitor drinks one liter of water from the surface stream or picnic well, the doses from this exposure are estimated and presented in Table 4.2. As defined here, the maximum total dose received by an occasional visitor is the combination of surface water and drinking water from the Red Gate Woods North Well (#5160). This maximum dose would be 0.0001 mrem per visit.

In order to put the doses into perspective, comparisons can be made to annual average doses received by the public from natural or other generally accepted sources of radiation. These are listed in Table 4.3. It is obvious that the magnitude of the doses potentially received near Plot M from residual radioactive substances remaining from work conducted in this area are insignificant compared to these sources.

### **4.2 Risk Estimates**

Risk estimates of possible health effects from radiation doses to the public from Plot M have been made to provide another perspective in interpreting the radiation doses.

**TABLE 4.1**

Dose From Continuous Exposure to Hydrogen-3 at Selected Locations, 2007

Pathway	Maximum		Annual Average		DOE Dose Limit	Maximum Carcinogenic Risk
	Conc	Dose	Conc	Dose		
Surface Water						
Seep	33.8 nCi/L	1.6 mrem/y	20.2 nCi/L	0.9 mrem/y	100 mrem/y	$8 \times 10^{-7}$
Well Water						
Red Gate Woods North (#5160)	1.45 nCi/L	0.067 mrem/y	1.28 nCi/L	0.059 mrem/y	100 mrem/y	$5 \times 10^{-8}$

**TABLE 4.2**

Estimates of Hydrogen-3 Exposures to a Casual Visitor to Plot M, 2007

Pathway	Quantity	Maximum Dose	Annual Average	DOE Dose Limit	Average Carcinogenic Risk
Surface Water					
Seep	One Liter	0.002 mrem	0.0012 mrem	100 mrem/y	$9 \times 10^{-10}$
Well Water					
Red Gate Woods North (#5160)	One Liter	0.00009 mrem	0.00008 mrem	100 mrem/y	$6 \times 10^{-11}$

**TABLE 4.3**

Annual Average Dose Equivalent in the U. S. Population\*

Source	(mrem)
Natural Sources	
Radon	200
Internal ( $^{40}\text{K}$ and $^{226}\text{Ra}$ )	39
Cosmic	28
Terrestrial	28
Medical	
Diagnostic X-rays	39
Nuclear Medicine	14
Consumer Products	
Domestic Water Supplies, Building Materials, etc.	10
Occupational (Medical Radiology, Industrial Radiography, Research, etc.)	1
Nuclear Fuel Cycle	< 1
Fallout	< 1
Other Miscellaneous sources	< 1
Total	360

\*NCRP report No. 93.<sup>34</sup>

Estimates for carcinogenic risk, the risk of contracting cancer from these exposures, are included in Table 4.1 and Table 4.2 for the average exposure scenario. Based on the BIER V report,<sup>35</sup> a dose of one mrem/y equates to an increased risk of  $7 \times 10^{-7}$ . This conversion ratio is used in these tables. The risks are estimated to be in addition to the normal incident rate of cancer in the general population. For example, a carcinogenic risk of  $10^{-7}$  would mean one additional cancer to 10,000,000 people exposed under the prescribed conditions. The EPA environmental protection standards are generally based on an acceptable risk between  $10^{-4}$  and  $10^{-6}$ . This would imply that a risk of greater than  $10^{-4}$  would be unacceptable and a risk of less than  $10^{-6}$  would be acceptable. Examination of Table 4.1 indicates that even under the very conservative assumptions of sole source use of the water at Plot M annual average concentrations, the risk is less than the EPA recommendation. For the Table 4.2 hypothetical dose to an occasional visitor of 0.00001 mrem, the risk would be about  $10^{-11}$ . The risk from exposure to radionuclides at Plot M can be compared to the risk associated with various events. A few examples are collected in Table 4.4. The risk from the naturally-occurring sources of radioactivity listed in Table 4.3 is estimated to be about one additional cancer in a population of 8,000. Therefore, the monitoring program results have established that radioactivity at Plot M is very low and does not endanger the health or safety of those living in the area or visiting the site.

**TABLE 4.4**

## Risk of Death From Various Events

Cause	Risk
Lightning Strike	$5 \times 10^{-8}$
Tornado	$1 \times 10^{-7}$
Flood	$1 \times 10^{-7}$
Hurricane	$2.5 \times 10^{-7}$
Drowning	$8 \times 10^{-6}$
Air Travel	$3 \times 10^{-6}$
Firearms	$2 \times 10^{-6}$

This page intentionally left blank

## 5.0 REFERENCES

1. Golchert, N. W. and Sedlet, J., *Formerly Utilized MED/AEC Sites Remedial Action Program - Radiological Survey of Site A, Palos Park Forest Preserve, Chicago, Illinois, U. S.* Department of Energy Report DOE/EV-0005/7 (April 1978).
2. Golchert, N. W., Sedlet, J., and Hayes, K. A., *Environmental Surveillance of the Palos Park Forest Preserve*, Argonne National Laboratory Report ANL-83-6 (January 1983).
3. Golchert, N. W. and Sedlet, J., *Site Surveillance and Maintenance Program for Palos Park - Report for 1982*, Argonne National Laboratory (available from the authors) (April 1984).
4. Golchert, N. W. and Sedlet, J., *Site Surveillance and Maintenance Program for Palos Park - Report for 1983*, Argonne National Laboratory (available from the authors) (June 1984).
5. Golchert, N. W. and Sedlet, J., *Site Surveillance and Maintenance Program for Palos Park - Report for 1984*, Argonne National Laboratory (available from the authors) (April 1985).
6. Golchert, N. W. and Sedlet, J., *Site Surveillance and Maintenance Program for Palos Park - Report for 1985*, Argonne National Laboratory Report ANL-86-25 (April 1986).
7. Golchert, N. W., *Site Surveillance and Maintenance Program for Palos Park - Report for 1986*, Argonne National Laboratory Report ANL-87-8 (April 1987).
8. Golchert, N. W., *Site Surveillance and Maintenance Program for Palos Park - Report for 1987*, Argonne National Laboratory Report ANL-88-12 (April 1988).
9. Golchert, N. W., *Site Surveillance and Maintenance Program for Palos Park - Report for 1988*, Argonne National Laboratory Report ANL-89/7 (April 1989).



10. Golchert, N. W., *Surveillance of Site A and Plot M - Report for 1989*, Argonne National Laboratory Report ANL-90/7 (April 1990).
11. Golchert, N. W., *Surveillance of Site A and Plot M - Report for 1990*, Argonne National Laboratory Report ANL-91/2 (May 1991).
12. Golchert, N. W., *Surveillance of Site A and Plot M - Report for 1991*, Argonne National Laboratory Report ANL-92/13 (May 1992).
13. Golchert, N. W., *Surveillance of Site A and Plot M - Report for 1992*, Argonne National Laboratory Report ANL-93/4 (May 1993).
14. Golchert, N. W., *Surveillance of Site A and Plot M - Report for 1993*, Argonne National Laboratory Report ANL-94/9 (May 1994).
15. Golchert, N. W., *Surveillance of Site A and Plot M - Report for 1994*, Argonne National Laboratory Report ANL-95/7 (May 1995).
16. Golchert, N. W., *Surveillance of Site A and Plot M - Report for 1995*, Argonne National Laboratory Report ANL-96/2 (June 1996).
17. Golchert, N. W., *Surveillance of Site A and Plot M - Report for 1996*, Argonne National Laboratory Report ANL-97/5 (May 1997).
18. Golchert, N. W., *Surveillance of Site A and Plot M - Report for 1997*, Argonne National Laboratory Report ANL-98/1 (May 1998).
19. Golchert, N. W., *Surveillance of Site A and Plot M - Report for 1998*, Argonne National Laboratory Report ANL-99/2 (May 1999).

20. Golchert, N. W., *Surveillance of Site A and Plot M - Report for 1999*, Argonne National Laboratory Report ANL-00/3 (May 2000).
21. Golchert, N. W., *Surveillance of Site A and Plot M - Report for 2000*, Argonne National Laboratory Report ANL-01/1 (May 2001).
22. Golchert, N. W., *Surveillance of Site A and Plot M - Report for 2001*, Argonne National Laboratory Report ANL-02/1 (May 2002).
23. Golchert, N. W., *Surveillance of Site A and Plot M - Report for 2002*, Argonne National Laboratory Report ANL-03/1 (May 2003).
24. Golchert, N. W., "*Surveillance of Site A and Plot M – Report for 2003*," Argonne National Laboratory Report ANL-04/1 (May 2004).
25. Golchert, N. W., "*Surveillance of Site A and Plot M – Report for 2004*," Argonne National Laboratory Report ANL-05/01 (April 2005).
26. Golchert, N. W., "*Surveillance of Site A and Plot M – Report for 2005*," Argonne National Laboratory Report ANL-06/01 (April 2006).
27. Golchert, N. W., "*Surveillance of Site A and Plot M – Report for 2006*," Argonne National Laboratory Report ANL-07/01 (April 2007).
28. U. S. Department of Energy, "Radiation Protection of the Public and the Environment," *DOE Order 5400.5*, February 8, 1990.
29. U. S. Environmental Protection Agency, "National Primary Drinking Water Regulations," 40 CFR Part 141.

30. U. S. Department of Energy, "Environmental Regulatory Guide for Radiological Effluent Monitoring and Environmental Surveillance," *DOE/EH-0173T*, January 1991.
31. International Commission on Radiological Protection, "Reference Man: Anatomical, Physiological, and Metabolic Characteristics," *ICRP Publication 23*, Pergamon Press, New York, NY (1975).
32. U. S. Department of Energy, "Internal Dose Conversion Factors for Calculation of Dose to the Public," *DOE/EH-0071*, July 1988.
33. Nicholas, J. R. and Healy, R. W., "Hydrogen-3 Migration From a Low-Level Radioactive-Waste Disposal Site Near Chicago, Illinois," U. S. Geological Survey Water-Supply Paper 2333, 1988.
34. National Council on Radiation Protection and Measurements, *Ionizing Radiation Exposure of the Population of the United States*, NCRP Report No. 93, September 1, 1987.
35. Committee on Biological Effects of Ionizing Radiation, *Health Effects on Populations of Exposure to Low Levels of Ionizing Radiation - BEIR V Report*, National Academy Press, Washington, 1990.
36. Golchert, N. W., Davis, T. M., and Moos, L. P., *Argonne National Laboratory Site Environmental Report for Calendar Year 2006*, Argonne National Laboratory Report, ANL-07/02 (September 2007).
37. U. S. Environmental Protection Agency, 1986, RCRA Ground Water Monitoring Technical Enforcement Guidance Document, OSWER-9950.1, Office of Solid Waste and Emergency Response, Washington, DC.

## 6.0 APPENDICES

### 6.1 Quality Assurance Program

All nuclear instrumentation is calibrated with standardized sources obtained from or traceable to the U. S. National Institute of Standards and Technology (NIST). The equipment is checked prior to the sample measurements with secondary counting standards to insure proper operation. Samples were periodically analyzed in duplicate or with the addition of known amounts of a radionuclide to check precision and accuracy. Intercomparison samples distributed by the DOE Mixed-Analyte Performance Evaluation Program (MAPEP), a semi-annual distribution of two different sample matrices containing various combinations of radionuclides are analyzed. The results of our participation in this program for 2006 are published in ANL-07/02.<sup>36</sup>

Many factors enter into an overall quality assurance program other than the analytical quality control discussed above. Representative sampling is of prime importance. Appropriate sampling protocols are followed for each type of sampling being conducted. Water samples are pre-treated in a manner designed to maintain the integrity of the analytical constituent. For example, samples for trace radionuclide analyses are acidified immediately after collection to prevent hydrolytic loss of metal ions and filtered to reduce leaching from suspended solids.

The monitoring wells are sampled using the protocols listed in the Resource Conservation and Recovery Act (RCRA) Ground Water Monitoring Technical Enforcement Guidance Document.<sup>37</sup> The volume of water in the casing is determined by measuring the water depth from the surface and the depth to the bottom of the well. This latter measurement also determines whether siltation has occurred that might restrict water movement in the screen area. For those wells in the glacial drift that do not recharge rapidly, the well is emptied and the volume removed is compared to the calculated volume. In most cases, these volumes are nearly identical. The well is then sampled by bailing with a Teflon bailer. All samples are collected for radiological analyses only. For samples in the porous saturated zone which recharge rapidly, three well volumes are purged using submersible pumps. If field parameters are measured, samples are collected as soon as these readings stabilize. All samples are placed in precleaned bottles, labeled, and preserved. All field

measurement and sampling equipment is cleaned by field rinsing with Type II deionized water. The samples are transferred to the analytical laboratory along with a list of all samples. This list acts as the chain-of-custody transfer document.

## 6.2 Applicable Standards

The standard that is relevant to this study is the DOE Order 5400.5 which established a dose limit of 100 mrem/y.<sup>28</sup> The dose limit and dose calculation methodology are applicable to all media: surface water, deep holes, boreholes, and drinking water. The EPA drinking water standard<sup>29</sup> is not applicable to the picnic wells since they do not meet the definition of a public water system. However, the EPA standard of 20 nCi/L for hydrogen-3 may be useful for some comparison purposes.

## 6.3 Analytical Methods

The analytical methods used to obtain the data in this report are the same as those used in ANL-07/02.<sup>36</sup>

## 6.4 Distribution for ANL-08/04

### Internal

T. S. Bray  
T. M. Davis  
A. T. Fracaro  
N. W. Golchert (10)  
M. A. Kamiya  
W. D. Luck  
R. H. McCook  
L. P. Moos  
J. L. Palasik  
R. E. Piorkowski  
T. J. Schneider  
J. L. Tucker  
C. L. Wilkinson  
G. H. Zeman  
TIS File

### External

Argonne Library  
A. Kleinrath, DOE Grand Junction Office (10)  
S. L. Heston, DOE Argonne Site Office  
B. J. Quirke, DOE Chicago Operations Office  
R. Allen, Illinois Emergency Management Agency  
J. Barnett, U. S. Environmental Protection Agency, Region V  
Bedford Park Public Library  
T. Hyde, U. S. Environmental Protection Agency  
T. Kelleher, Chicago District, Corps of Engineers  
R. LaMort, Cook County Board of Commissioners  
Librarian, Illinois Emergency Management Agency  
Mayor of Willow Springs  
M. McMullan, U. S. Environmental Protection Agency, Environmental Review Branch  
C. Merenowicz, Forest Preserve District of Cook County  
J. R. Nicholas, U. S. Geological Survey  
L. Regner, U. S. Environmental Protection Agency, Federal Facility Coordinator  
S. Shemanski, Cook County Department of Public Health  
C. Smith, Illinois Environmental Protection Agency  
D. Weber, Forest Preserve District of Cook County  
G. Wright, Illinois Emergency Management Agency

This page intentionally left blank



## Environment, Safety, and Health/Quality Assurance Oversight Division

Argonne National Laboratory  
9700 South Cass Avenue, Bldg. 201  
Argonne, IL 60439-4832

[www.anl.gov](http://www.anl.gov)



UChicago ►  
Argonne<sub>LLC</sub>



A U.S. Department of Energy laboratory managed by UChicago Argonne, LLC