

# **Postclosure Inspection Report for the Tonopah Test Range and Nevada Test and Training Range, Nevada, Sites for Calendar Year 2024**

**March 2025**

**Approved for public release; further dissemination unlimited**



**U.S. DEPARTMENT OF  
ENERGY**

**Legacy  
Management**

Available for sale to the public from:

U.S. Department of Commerce  
National Technical Information Service  
5301 Shawnee Road  
Alexandria, VA 22312  
Telephone: (800) 553-6847  
Fax: (703) 605-6900  
E-mail: [orders@ntis.gov](mailto:orders@ntis.gov)

Available electronically at <https://www.osti.gov/scitech/>

Available for a processing fee to U.S. Department of Energy and its contractors,  
in paper, from:

U.S. Department of Energy  
Office of Scientific and Technical Information  
P.O. Box 62  
Oak Ridge, TN 37831-0062  
Phone: (865) 576-8401  
Fax: (865) 576-5728  
Email: [reports@adonis.osti.gov](mailto:reports@adonis.osti.gov)

*Reference herein to any specific commercial product, process, or service by trade name, trademark, manufacturer, or otherwise, does not necessarily constitute or imply its endorsement, recommendation, or favoring by the United States Government or any agency thereof or its contractors or subcontractors.*

# Contents

Abbreviations .....	ii
Executive Summary .....	iii
1.0 Introduction .....	1
1.1 Scope and Objective .....	1
2.0 Inspection Results .....	2
2.1 CAU 407, Roller Coaster RadSafe Area (TTR) .....	2
2.2 CAU 424, Area 3 Landfill Complexes (TTR) .....	2
2.3 CAU 453, Area 9 UXO Landfill (TTR) .....	4
2.4 CAU 487, Thunderwell Site (TTR) .....	4
3.0 Recommendations .....	4
3.1 CAU 407, Roller Coaster RadSafe Area (TTR) .....	4
3.2 CAU 424, Area 3 Landfill Complexes (TTR) .....	4
3.3 CAU 453, Area 9 UXO Landfill (TTR) .....	5
3.4 CAU 487, Thunderwell Site (TTR) .....	5
4.0 References .....	5
5.0 Bibliography .....	6

## Figures (in Appendix A)

Figure 1. TTR Site Location Map .....	1
Figure 2. CAU 407, Roller Coaster RadSafe Area .....	2
Figure 3. CAU 424, CAS Locations .....	3
Figure 4. CAU 424, Landfills A3-1 and A3-2 .....	4
Figure 5. CAU 424, Landfill A3-3 .....	5
Figure 6. CAU 424, Landfill A3-4 .....	6
Figure 7. CAU 424, Landfill A3-5 .....	7
Figure 8. CAU 424, Landfill A3-6 .....	8
Figure 9. CAU 424, Landfill A3-8 .....	9
Figure 10. CAU 453, Area 9 UXO Landfill .....	10
Figure 11. CAU 487, Thunderwell .....	11

## Appendixes

Appendix A	Figures
Appendix B	Postclosure Inspection Plans
Appendix C	Postclosure Inspection Checklists
Appendix D	Field Notes
Appendix E	Photographs
Appendix F	NDEP Correspondence and Record of Review

## Abbreviations

AEC	U.S. Atomic Energy Commission
CAS	Corrective Action Site
CAU	Corrective Action Unit
DOE	U.S. Department of Energy
FFACO	Federal Facility Agreement and Consent Order
LM	Office of Legacy Management
NDEP	Nevada Division of Environmental Protection
NTTR	Nevada Test and Training Range
SNL	Sandia National Laboratories
TTR	Tonopah Test Range
UR	use restriction
USAF	U.S. Air Force
UXO	unexploded ordinance



## Executive Summary

This U.S. Department of Energy Office of Legacy Management (LM) report provides the results of the annual postclosure use restriction (UR) inspections at Corrective Action Sites (CASs) on the Tonopah Test Range (TTR) and Nevada Test and Training Range, Nevada, Sites. This report covers postclosure UR inspections from calendar year 2024 and includes visual inspections and repair activities completed at the following Corrective Action Units (CAUs):

- CAU 407, Roller Coaster RadSafe Area (TTR)
- CAU 424, Area 3 Landfill Complexes (TTR)
- CAU 453, Area 9 Unexploded Ordinance Landfill (TTR)
- CAU 487, Thunderwell Site (TTR)

Visual inspections were conducted in accordance with the postclosure requirements outlined in specific CAU and CAS URs approved by the Nevada Division of Environmental Protection. The annual postclosure inspections for CASs associated with CAUs 407, 424, 453, and 487 were conducted on April 23, 2024. Maintenance items identified included animal burrows, loose signs, and broken wire fencing. All repairs were completed during the inspection.

This report, Closure Reports, and the current, approved UR forms are available on the LM public website at <https://lmpublicsearch.lm.doe.gov/SitePages/default.aspx?sitename=Tonopah> and [https://lmpublicsearch.lm.doe.gov/lmsites/current\\_ttr\\_userrestrictions.pdf](https://lmpublicsearch.lm.doe.gov/lmsites/current_ttr_userrestrictions.pdf).

# 1.0 Introduction

This report presents results of the inspections conducted by the U.S. Department of Energy (DOE) Office of Legacy Management (LM) at the Tonopah Test Range (TTR) and Nevada Test and Training Range (NTTR), Nevada, Sites. The TTR site is in south-central Nevada, approximately 140 miles northwest of Las Vegas, Nevada, and 30 miles southeast of Tonopah, Nevada. The TTR site is within the boundaries of the NTTR (Appendix A, Figure 1). The TTR site includes Corrective Action Sites (CASs) on both the TTR and NTTR sites.

In 1956, the U.S. Atomic Energy Commission (AEC), predecessor agency to DOE, began testing weapon systems, research rockets, and artillery on the TTR site. All sites related to these AEC activities were closed under the 1996 Nevada *Federal Facility Agreement and Consent Order (FFACO)* (DCNR, DOE, and DOD 1996) (FFACO), as amended, and the majority do not require any continuing actions. CASs within four Corrective Action Units (CAUs) have use restrictions (URs) and require annual inspections. Closure Reports for each CAU establish the postclosure inspection requirements; these were later modified through Records of Technical Change, and all requirements are now documented on UR forms for the sites.

## 1.1 Scope and Objective

This report includes visual annual inspection results, maintenance and repair activities, and recommendations for calendar year 2024 for URs associated with CASs on the TTR and NTTR sites that are accessed through the TTR and NTTR sites main gate. The TTR site is part of and on the NTTR.

The locations of the CAUs are shown in Figure 1 of Appendix A. The visual inspections were conducted in accordance with the postclosure requirements outlined in specific CAU and CAS URs approved by the Nevada Division of Environmental Protection (NDEP). The following visual inspection results are included in this report:

- **CAU 407: Roller Coaster RadSafe Area (TTR)**
  - CAS TA-23-001-TARC: Roller Coaster RadSafe Area
- **CAU 424: Area 3 Landfill Complexes (TTR)**
  - CAS 03-08-001-A301: Landfill Cell A3-1
  - CAS 03-08-002-A302: Landfill Cell A3-2
  - CAS 03-08-002-A303: Landfill Cell A3-3
  - CAS 03-08-002-A304: Landfill Cell A3-4
  - CAS 03-08-002-A305: Landfill Cell A3-5
  - CAS 03-08-002-A306: Landfill Cell A3-6
  - CAS 03-08-002-A308: Landfill Cell A3-8
- **CAU 453: Area 9 Unexploded Ordinance (UXO) Landfill (TTR)**
  - CAS 09-55-001-0952: Area 9 Landfill

- **CAU 487: Thunderwell Site (TTR)**

— CAS RG-26-001-RGRV: Thunderwell Site

Site figures are included in Appendix A. There are no postclosure inspection plans in Appendix B because they have been consolidated onto UR forms available on the LM public website at [https://lmpublicsearch.lm.doe.gov/lmsites/current\\_ttr\\_userrestrictions.pdf](https://lmpublicsearch.lm.doe.gov/lmsites/current_ttr_userrestrictions.pdf). Postclosure inspection checklists from April 23, 2024, are included in Appendix C. Appendix D, “Field Notes,” does not include any field notes because all observations were captured on the postclosure inspection checklists. Appendix E, “Photographs,” does not include any inspection photographs because none were taken or required during the 2024 postclosure inspections.

Depending on specific UR requirements, postclosure UR inspections may include a visual inspection of some or all of the following physical controls:

- Fencing (is present and provides a barrier; at CAUs 407 and 453 only)
- Signs (are present and legible)
- Soil cover (completely covers material)
- Monuments (are present and standing)
- Markers (are present)

## **2.0 Inspection Results**

Visual inspections were conducted on April 23, 2024. The inspection results are summarized below and documented on postclosure inspection checklists, which can be found in Appendix C.

### **2.1 CAU 407, Roller Coaster RadSafe Area (TTR)**

Visual inspections were conducted according to the postclosure requirements for CAU 407, Roller Coaster RadSafe Area (TTR), CAS TA-23-001-TARC, Roller Coaster RadSafe Area, as described in the CAU 407 UR (DOE/EMNV 2019a). The site is shown in Figure 2 in Appendix A. The visual inspection was conducted on April 23, 2024. All signs were legible. Two signs were loose and reattached to the fence. Three sections of fence along the south, east, and north sides were repaired. Several small animal burrows were observed on the cell, but the burrows did not pose an imminent hazard to the integrity of the cell cover at the time of the inspection. No other repair or maintenance needs were observed.

### **2.2 CAU 424, Area 3 Landfill Complexes (TTR)**

Visual inspections were conducted according to the postclosure requirements for CAU 424, Area 3 Landfill Complexes (TTR), CAS 03-08-001-A301, Landfill Cell A3-1; CAS 03-08-002-A302, Landfill Cell A3-2; CAS 03-08-002-A303, Landfill Cell A3-3; CAS 03-08-002-A304, Landfill Cell A3-4; CAS 03-08-002-A305, Landfill Cell A3-5; CAS 03-08-002-A306, Landfill Cell A3-6; and CAS 03-08-002-A308, Landfill Cell A3-8, as described in the CAU 424 UR (DOE/EMNV 2019b). The landfill locations are shown in Figure 3 of Appendix A. The inspection was conducted on April 23, 2024.

**Landfill Cell A3-1 (CAS 03-08-001-A301):** All signs, monuments, and survey markers were in good condition. All corner monuments had warning signs. Several small animal burrows were observed on the cell, but the burrows did not pose an imminent hazard to the integrity of the cell cover at the time of the inspection. No repair or maintenance needs were observed. The site is shown in Figure 4 of Appendix A.

**Landfill Cell A3-2 (CAS 03-08-002-A302):** All signs, monuments, and survey markers were in good condition. All corner monuments had warning signs. Several small animal burrows were observed on the cell, but the burrows did not pose an imminent hazard to the integrity of the cell cover at the time of the inspection. During the inspection, a bulldozer was leveling the road next to the cell. Leveling operations came within 2 feet of the UR boundary. However, the bulldozer did not pose an imminent hazard to the integrity of the cell. No repair or maintenance needs were observed. The site is shown in Figure 4 of Appendix A.

**Landfill Cell A3-3 (CAS 03-08-002-A303):** All signs, monuments, survey markers (on the monuments), and ground survey markers were in good condition. All monuments had warning signs. The survey marker on the northeast corner of A303 (west) is obstructed by a vehicle tire. The vehicle is parked on top of the survey marker making identification difficult. No repair or maintenance needs were observed. The site is shown in Figure 5 of Appendix A.

**Landfill Cell A3-4 (CAS 03-08-002-A304):** All signs, monuments, and survey markers were in good condition. All monuments had warning signs. A large 7 × 7 foot area of densely packed animal burrows was identified during inspection. Additionally, a separate 8-inch-diameter burrow was discovered on the cell. The burrows did not pose an imminent hazard to the integrity of the cell cover at the time of inspection. No repair or maintenance needs were observed. The site is shown in Figure 6 of Appendix A.

**Landfill Cell A3-5 (CAS 03-08-002-A305):** All signs, monuments, and survey markers were in good condition. All monuments had warning signs. No repair or maintenance needs were observed. Multiple tire tracks were observed on top of the cell. These tracks emanate from a nearby well construction project. During the inspection we were able to discuss vehicle use with the onsite construction site supervisor. Additionally, U.S. Air Force (USAF) representatives were informed of the issue. The construction site supervisor assured us that they will take steps to eliminate driving on top of the cell cover. At the time of inspection, the tire tracks did not pose an imminent hazard. It is possible that additional vehicle traffic could cause erosion or damage to the cell cover. The site is shown in Figure 7 of Appendix A.

**Landfill Cell A3-6 (CAS 03-08-002-A306):** All signs, monuments, and survey markers were in good condition. All monuments had warning signs. Several small animal burrows were observed on the cell. Some of these burrows were clustered around the southwest CAU Monument. While not an imminent hazard, these burrows could potentially cause instability to the Monument. The other burrows did not pose an imminent hazard to the integrity of the cell cover at the time of the inspection. Metal debris was observed on the surface, along with a small sign denoting its presence on cell. No repair or maintenance needs were observed. The site is shown in Figure 8 of Appendix A.

**Landfill Cell A3-8 (CAS 03-08-002-A308):** All ground survey monuments and markers were in good condition. Additional rocks were placed to help identify markers for future site visits. No repair or maintenance needs were observed. The site is shown in Figure 9 of Appendix A.

## 2.3 CAU 453, Area 9 UXO Landfill (TTR)

Visual inspections were conducted according to the postclosure requirements for CAU 453, Area 9 UXO Landfill (TTR), CAS 09-55-001-0952, Area 9 Landfill, as described in the CAU 453 UR (DOE/EMNV 2019c). The site is shown in Figure 10 of Appendix A. The inspection was conducted on April 23, 2024. All signs and monuments were in good condition. The perimeter fence was in good condition. UR signs were attached to the fence and legible. Minor cracking was observed by the northern trench. Cracks were filled with dirt. Minor erosion was observed on the mound of soil on the northwestern side of the cell. During the time of inspection, the erosion did not present an imminent hazard to the cell cover. Several small animal burrows were observed on the cell, but the burrows did not pose an imminent hazard to the integrity of the cell cover at the time of the inspection. Metal debris was observed on the cover; it was partially buried in soil. The debris was left in place. No other repair or maintenance needs were observed.

## 2.4 CAU 487, Thunderwell Site (TTR)

Visual inspections were conducted according to the postclosure requirements for CAU 487, Thunderwell Site (TTR), CAS RG-26-001-RGRV, Thunderwell Site, as described in the CAU 487 UR (DOE/EMNV 2019d). The site is shown in Figure 11 of Appendix A. The annual inspection was conducted on April 23, 2024. The site is made up of two land parcels: the A-17 Anomaly and the A-8 Anomaly. All signs, monuments, and survey markers were in good condition. All monuments had warning signs. Two metal tubes are exposed to the surface. This has been observed in the past and does not present an imminent hazard to the integrity of the cell. Minor erosion was also observed on the cell cover. During the time of inspection, the erosion did not pose an imminent hazard to the cell cover. No repair or maintenance needs were observed.

# 3.0 Recommendations

Recommendations of future maintenance and CAU status are outlined in this section.

## 3.1 CAU 407, Roller Coaster RadSafe Area (TTR)

The fence surrounding the CAU is starting to degrade. Numerous posts were loose, and the fence strands are losing integrity. The fence may need to be replaced in the future.

## 3.2 CAU 424, Area 3 Landfill Complexes (TTR)

The following recommendations are for CAS A303 and A305 within CAU 424:

**Landfill Cell A3-3 (CAS 03-08-002-A303):** Installation of monuments or concrete boundary markers on A303 (east) could help to protect cell integrity and field identification. The survey marker on the northeast corner of A303 (west) is obstructed by a vehicle tire. The vehicle is parked on top of the survey marker making identification difficult. Field identification would be easier and more efficient if the parked vehicle was moved off the marker. No other recommendations are proposed at CAS 03-08-002-A303.

**Landfill Cell A3-5 (CAS 03-08-002-A305):** Increased communication between TTR contractors, USAF staff, LM and Legacy Management Support staff, and NDEP should be implemented during projects that take place adjacent to a CAU. Additionally, contractors need to be informed of proper CAU boundaries and URs so that cell covers are not disturbed. No other recommendations are proposed at CAS 03-08-002-A305.

### **3.3 CAU 453, Area 9 UXO Landfill (TTR)**

During the inspection a lock had to be cut to open the gate and access CAU 453. Due to employee turnover the combination to the lock was not communicated properly to the inspection team. Sandia National Laboratories (SNL) maintenance staff assisted the inspection team and cut the lock. The lock was replaced with a keyed lock. The keys are held by SNL staff and will be provided to the inspection team in future CAU inspection events. Future staff should keep in communication with SNL to access the gate to CAU 453. No other recommendations are proposed at CAS 09-55-001-0952, Area 9 Landfill.

### **3.4 CAU 487, Thunderwell Site (TTR)**

No recommendations are proposed for CAS RG-26-001-RGRV, Thunderwell Site.

## **4.0 References**

DCNR (Nevada Department of Conservation and Natural Resources), DOE (U.S. Department of Energy), and DOD (U.S. Department of Defense), 1996. *Federal Facility Agreement and Consent Order (FFACO)*, March 15.

DOE (U.S. Department of Energy)/EMNV (Environmental Management Nevada Program), 2019a. *Record of Technical Change to Closure Report for Corrective Action Unit 407: Roller Coaster RADSAFE Area, Tonopah Test Range, Nevada*, DOE/NV--694-rev 1, ROTC No. DOE/NV--694-rev 1-ROTC 1, Las Vegas, Nevada, November 19.

DOE (U.S. Department of Energy)/EMNV (Environmental Management Nevada Program), 2019b. *Record of Technical Change to Closure Report for Corrective Action Unit 424: Area 3 Landfill Complex, Tonopah Test Range, Nevada*, Rev. 0, DOE/NV/11718--283, ROTC No. DOE/NV/11718--283-ROTC 1, Las Vegas, Nevada, July 2.

DOE (U.S. Department of Energy)/EMNV (Environmental Management Nevada Program), 2019c. *Record of Technical Change to Closure Report for Corrective Action Unit 453: Area 9 UXO Landfill, Tonopah Test Range, Nevada*, DOE/NV/11718--284, ROTC No. DOE/NV/11718--284-ROTC 1, Las Vegas, Nevada, November 19.

DOE (U.S. Department of Energy)/EMNV (Environmental Management Nevada Program), 2019d. *Record of Technical Change to Corrective Action Decision Document/Closure Report for Corrective Action Unit 487: Thunderwell Site, Tonopah Test Range, Nevada*, Rev. 0, DOE/NV--761, ROTC No. DOE/NV--761-ROTC 3, Las Vegas, Nevada, November 19.

## 5.0 Bibliography

DOE (U.S. Department of Energy), 2024. *Postclosure Inspection Report for the Tonopah Test Range and Nevada Test and Training Range, Nevada, Sites for Calendar Year 2023*, LMS/TTR/46633, Office of Legacy Management, October.

## **Appendix A**

### **Figures**



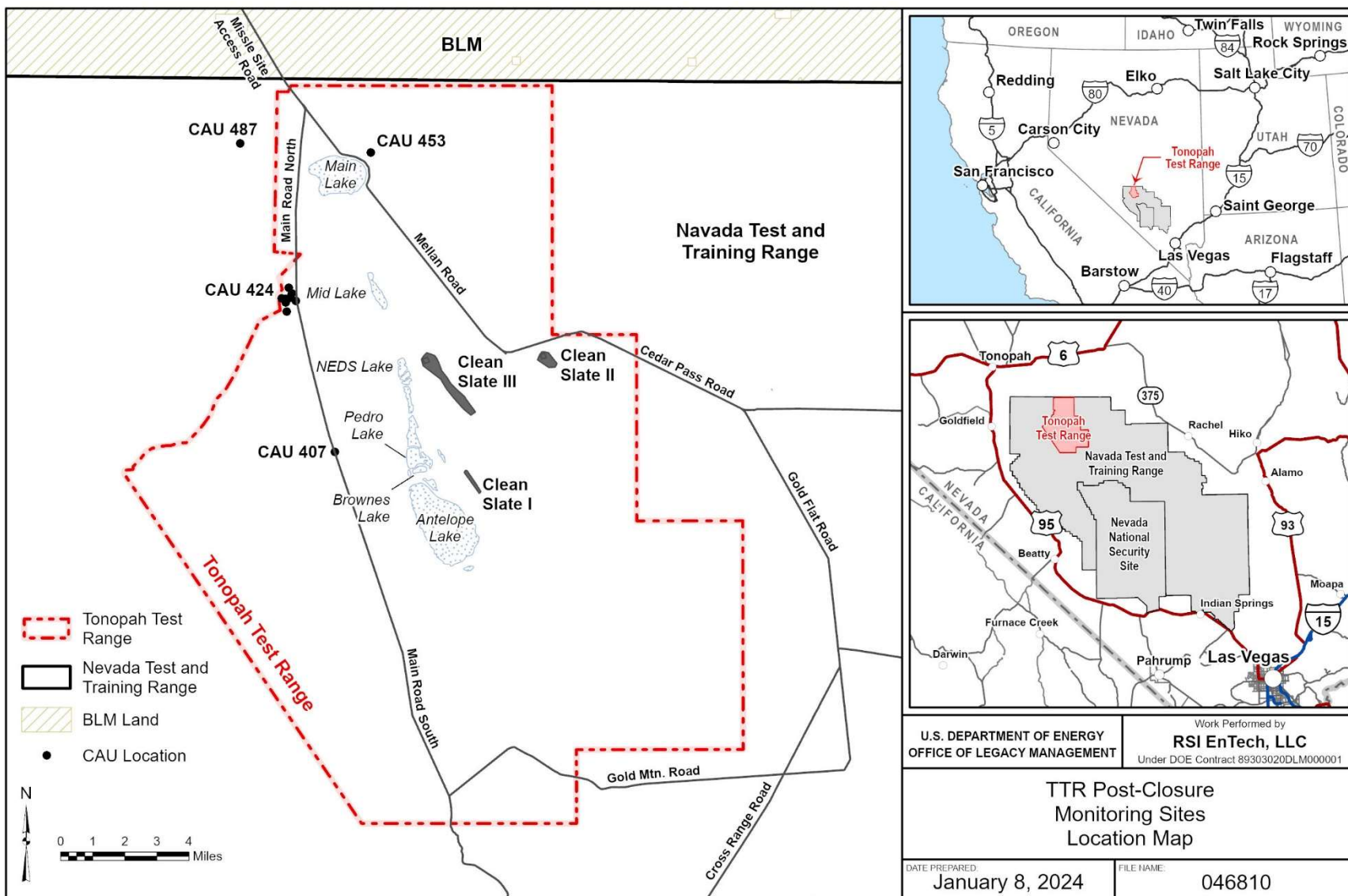




Figure 2. CAU 407, Roller Coaster RadSafe Area





Figure 3. CAU 424, CAS Locations



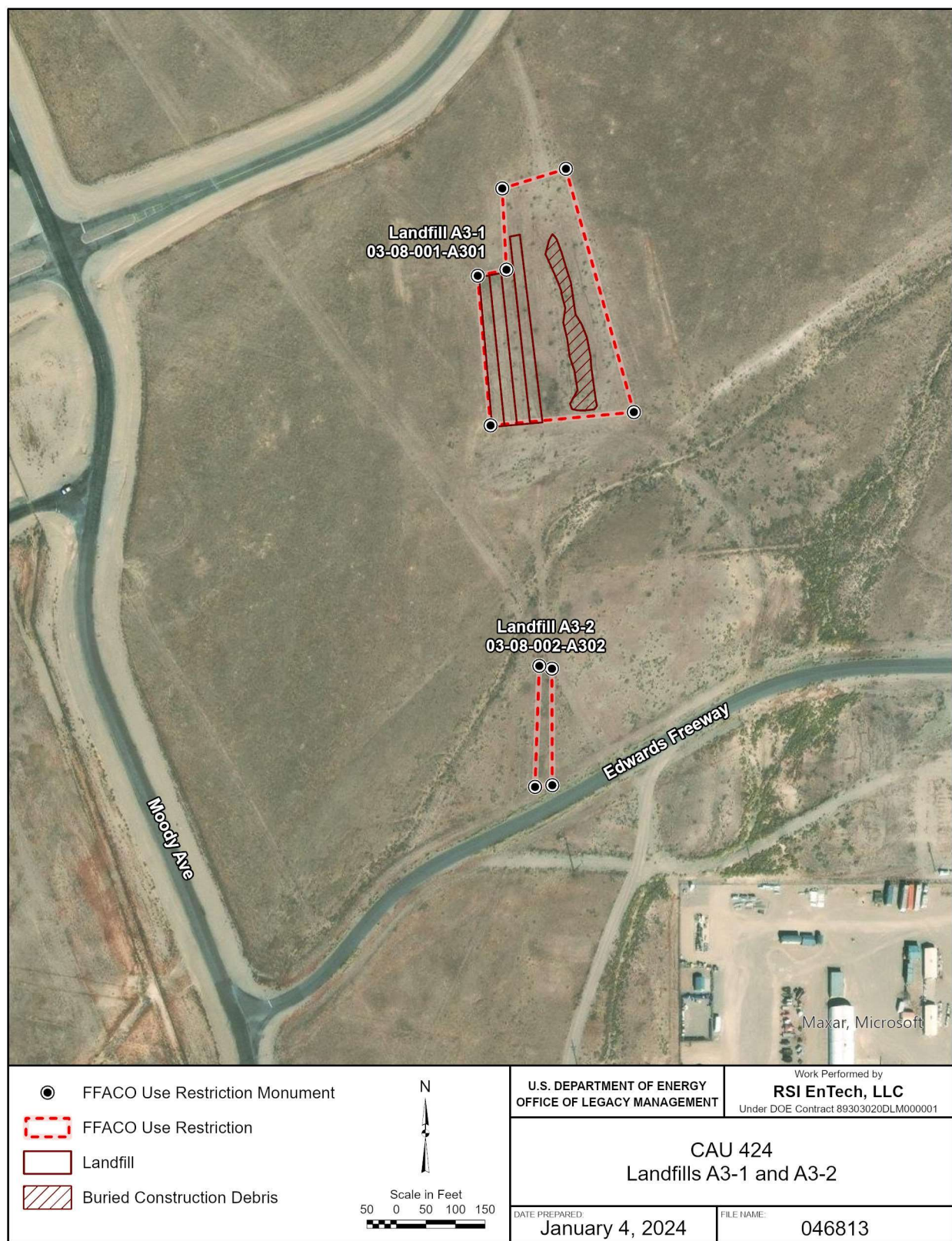


Figure 4. CAU 424, Landfills A3-1 and A3-2



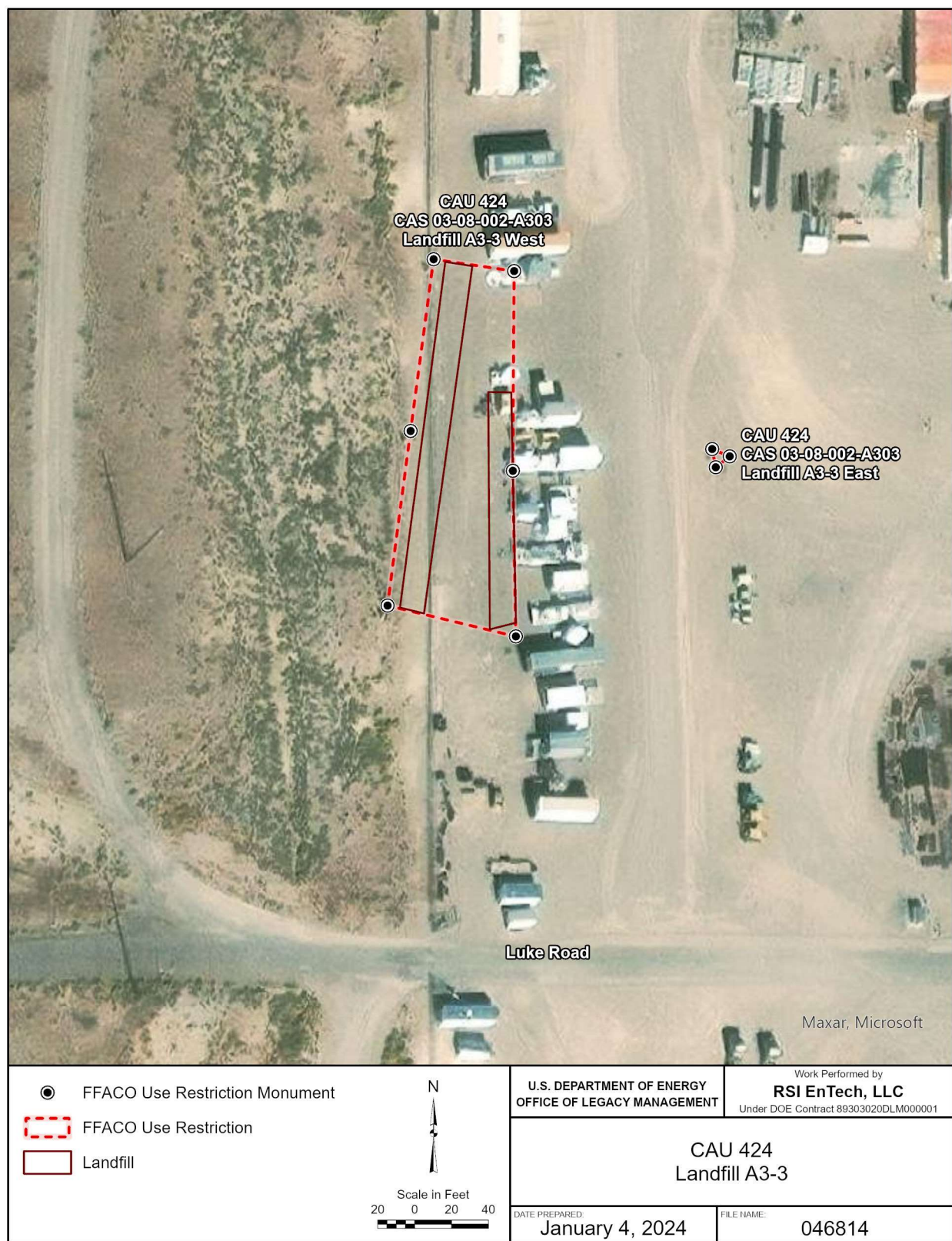


Figure 5. CAU 424, Landfill A3-3

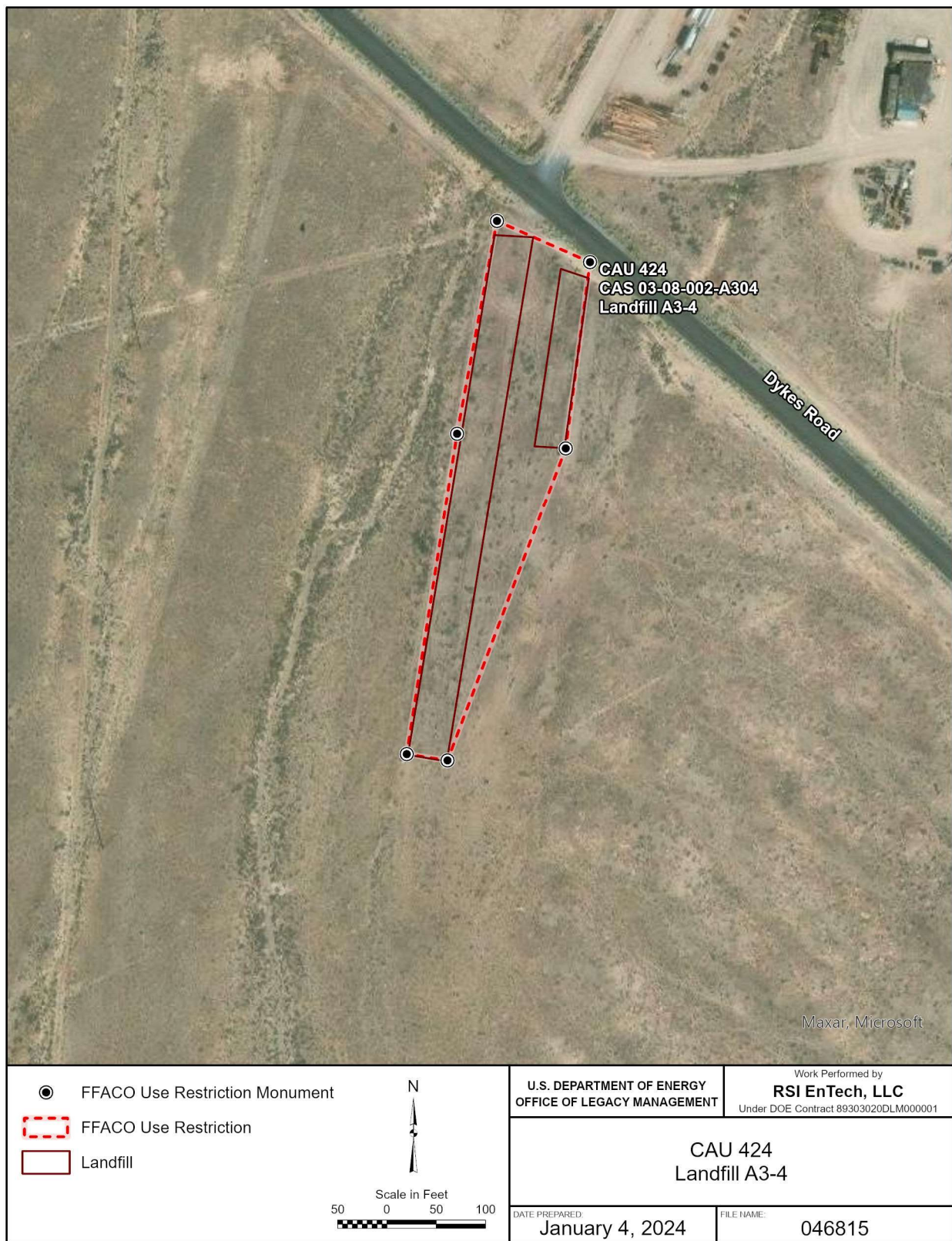


Figure 6. CAU 424, Landfill A3-4



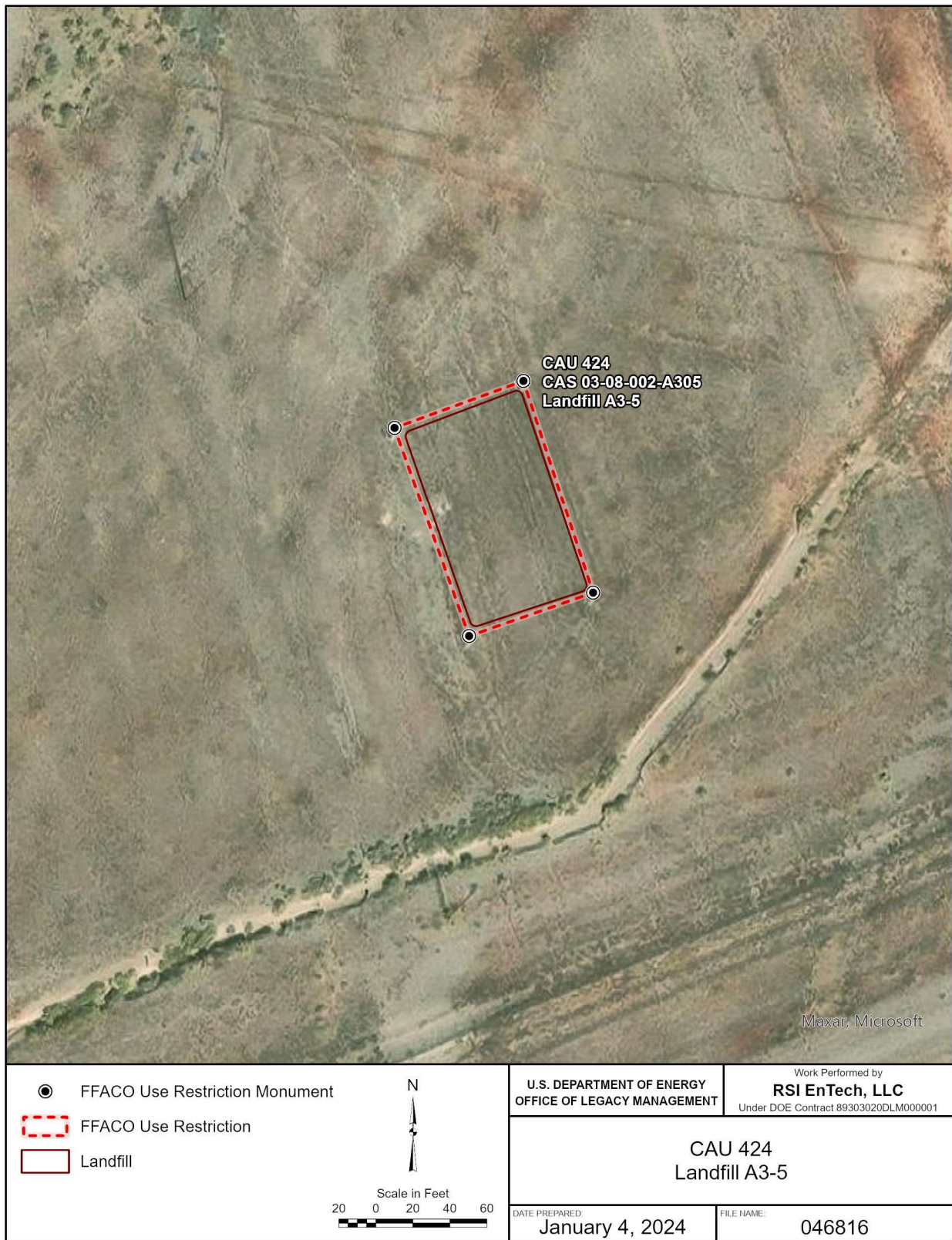


Figure 7. CAU 424, Landfill A3-5



Figure 8. CAU 424, Landfill A3-6



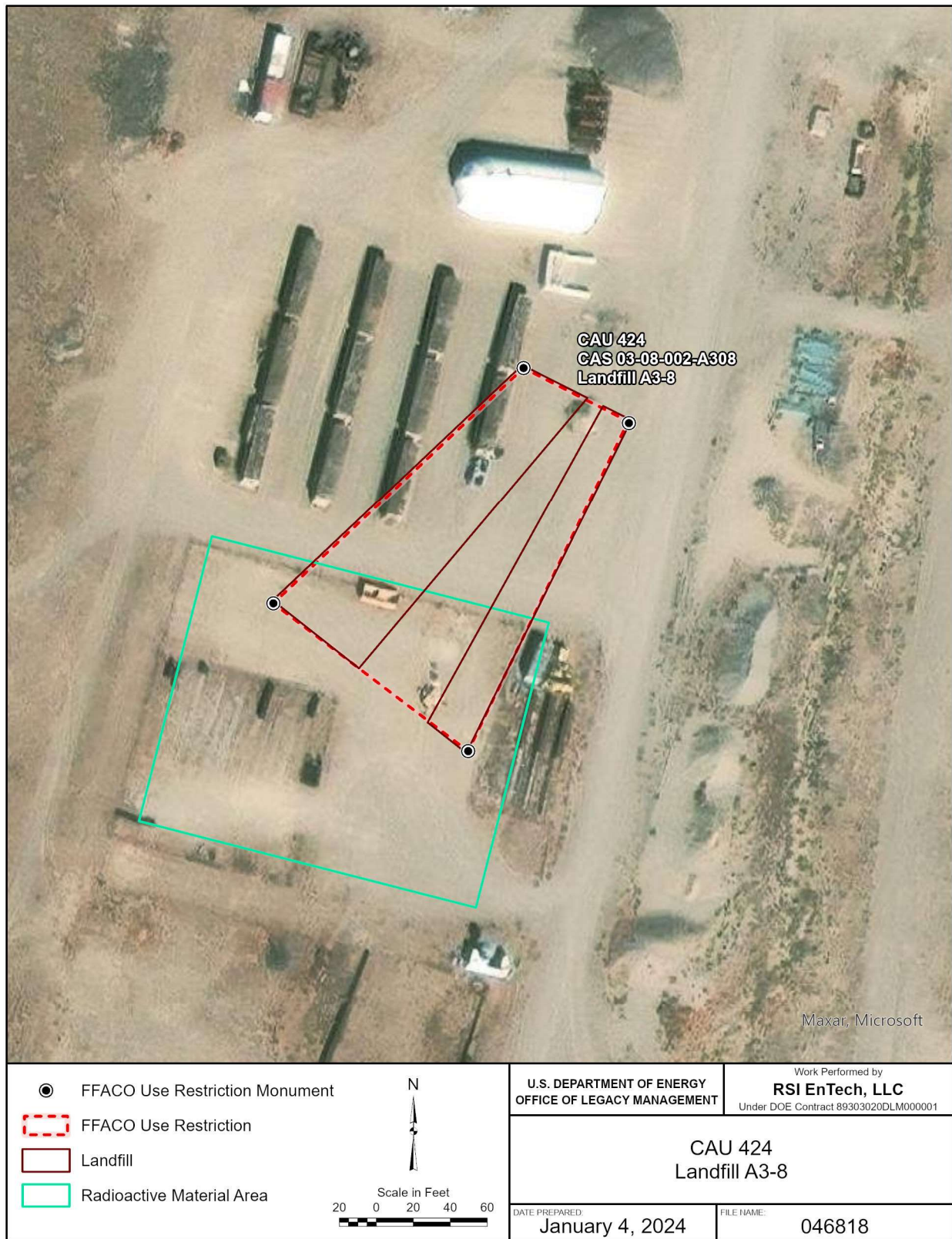


Figure 9. CAU 424, Landfill A3-8



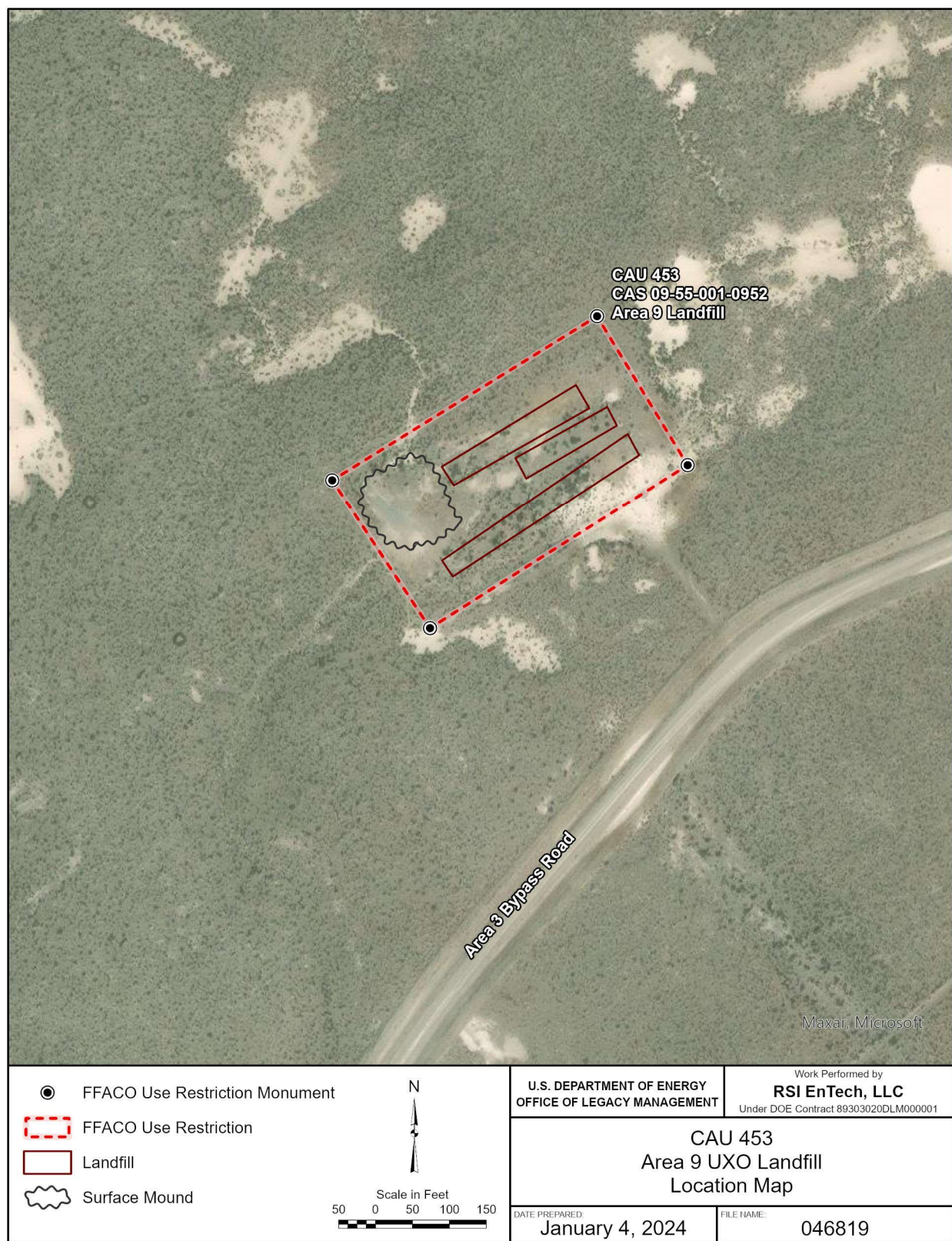


Figure 10. CAU 453, Area 9 UXO Landfill

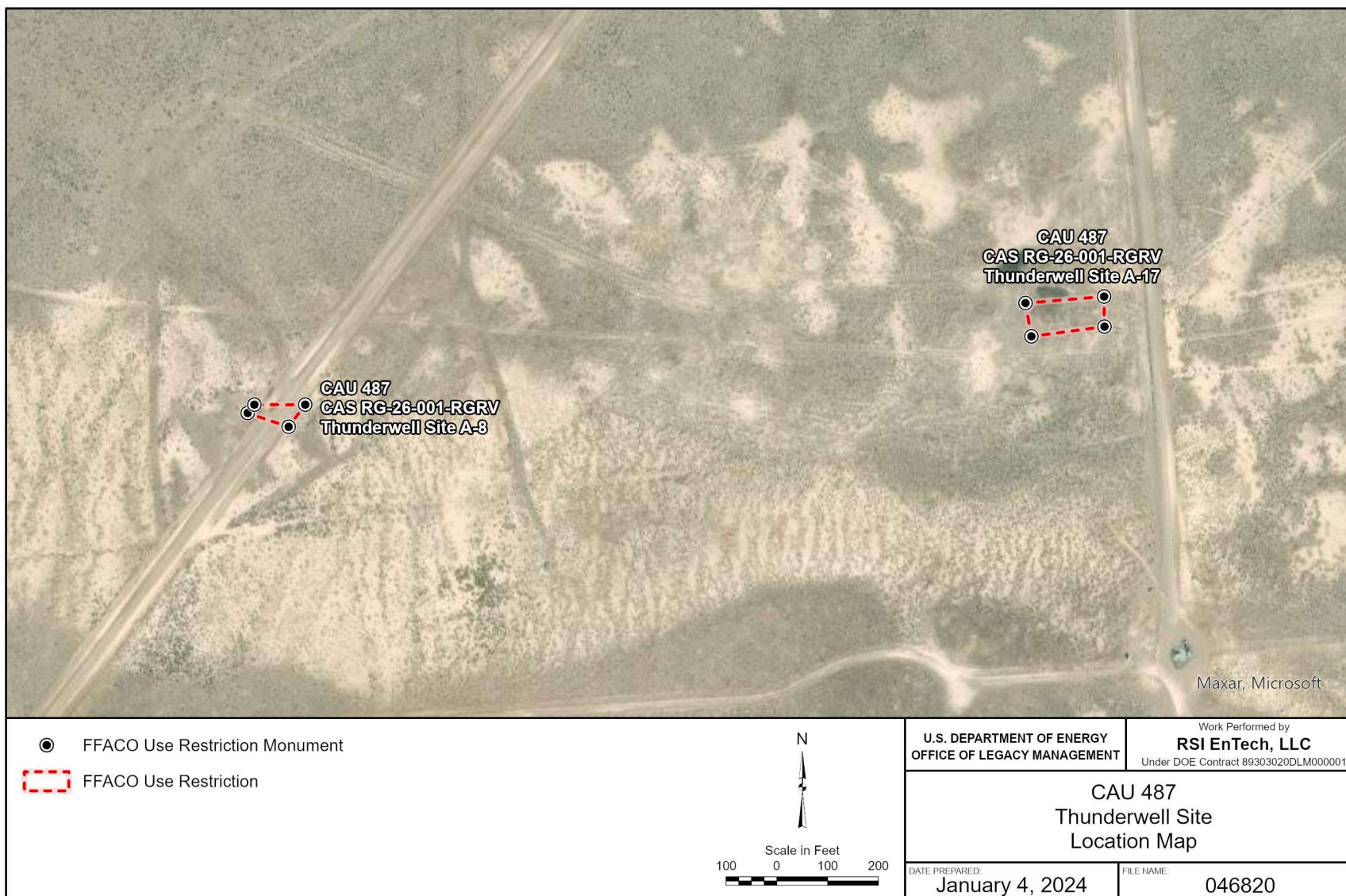


Figure 11. CAU 487, Thunderwell

## **Appendix B**

### **Postclosure Inspection Plans**

Postclosure inspections are conducted according to site-specific UR forms, so individual or annual inspection plans are not needed. Current, approved UR forms are available on the LM public website at [https://lmpublicsearch.lm.doe.gov/lmsites/current\\_ttr\\_userrestrictions.pdf](https://lmpublicsearch.lm.doe.gov/lmsites/current_ttr_userrestrictions.pdf).

## **Appendix C**

### **Postclosure Inspection Checklists**



**POST-CLOSURE INSPECTION CHECKLIST****CAU 407, ROLLER COASTER RADSAFE AREA (TTR) –  
CAS TA-23-001-TARC, ROLLER COASTER RADSAFE AREA**

Inspection Date: 4/23/24

Reason for Inspection: Annual

Date of Last Post-Closure Inspection: 5/31/23

Reason for Last Post-Closure Inspection: Annual

Inspector (name, title, organization): Alex McCarty, Site Lead, RSI

**A. GENERAL INSTRUCTIONS**

- **Visual inspection includes features described in this checklist.**
- Field notes are not required if the checklist and associated attachments adequately describe site conditions.
- Photographs are not required but may be taken to document maintenance/repair needs, anomalous features, or new features (such as changes in adjacent area land use).

<b>B. PREPARATION</b> (To be completed prior to the site visit)	YES	NO	EXPLANATION (required if shaded box is checked)
1. Were anomalies or trends detected on previous inspections?	X		Top strand of fence on the south side of cover was repaired. Fallen sign attached to damaged fence was reattached to top strand.
2. Were maintenance or repairs performed since the last inspection?	X		Sign and fence repair noted above.

**C. SITE INSPECTION** (To be completed during the site visit)

<b>UR Signs:</b>	YES	NO	EXPLANATION (required if shaded box is checked)
1. Are all use restriction signs present and legible?	X		
<b>Waste Unit Cover/Fenced Area:</b>	YES	NO	EXPLANATION (required if shaded box is checked)
1. Is there evidence of subsidence, settling or cracking, water ponding, or animal burrows on the cover?	X		Small animal burrows were observed on cover. None of the burrows present an imminent hazard to the integrity of the landfill cover.
2. Is there evidence of erosion (wind or water) on the cover?		X	
3. Is there any waste exposed?		X	
4. Are there signs of unauthorized use?		X	
5. Is there vegetation up against the fencing (inside or outside)?		X	
6. Is there damage to or a break in the fencing or fenceposts?	X		Two signs had to be reattached to fence. Three sections of fence along the south, east, and north sides were repaired.
7. Is there trash or debris within the fenced area?		X	
Are there any other issues not specifically described in this checklist?		X	

<b>D. FIELD CONCLUSIONS</b>	YES	NO	EXPLANATION (required if shaded box is checked)
1. Have photographs of the site been taken?		X	
2. Is there an imminent hazard to the integrity of the landfill cover?		X	

**Notes:**

The fence surrounding the cell is starting to degrade. Numerous posts were loose and the fence strands are losing integrity.

**E. INSPECTION PERSONNEL: Mary Young, Meghann Hurt, Chris Andres, Jennifer Carr, Shantae Green, Meghan Lyle, and Alex McCarty**

Inspector Signature &amp; Date:

**ALEXANDER****MCCARTY (Affiliate)**Digitally signed by ALEXANDER  
MCCARTY (Affiliate)

Date: 2024.05.06 16:00:43 -06'00'

**POST-CLOSURE INSPECTION CHECKLIST****CA/U 424, AREA 3 LANDFILL COMPLEXES (TTR) – CAS 03-08-001-A301, LANDFILL CELL A3-1**

Inspection Date: 4/23/24

Reason for Inspection: Annual

Date of Last Post-Closure Inspection: 5/31/23

Reason for Last Post-Closure Inspection: Annual

Inspector (name, title, organization): Alex McCarty, Site Lead, RSI

**A. GENERAL INSTRUCTIONS**

- **Visual inspection includes features described in this checklist.**
- Field notes are not required if the checklist and associated attachments adequately describe site conditions.
- Photographs are not required but may be taken to document maintenance/repair needs, anomalous features, or new features (such as changes in adjacent area land use).

<b>B. PREPARATION</b> (To be completed prior to the site visit)	YES	NO	EXPLANATION (required if shaded box is checked)
1. Were anomalies or trends detected on previous inspections?		X	
2. Were maintenance or repairs performed since the last inspection?		X	

**C. SITE INSPECTION** (To be completed during the site visit)

<b>UR Signs:</b>	YES	NO	EXPLANATION (required if shaded box is checked)
1. Are all use restriction signs present and legible?	X		
<b>Waste Unit Cover/Fenced Area:</b>	YES	NO	EXPLANATION (required if shaded box is checked)
1. Is there evidence of subsidence, settling or cracking, water ponding, or animal burrows on the cover?	X		Several small animal burrows were observed on the cell. The burrows do not pose an imminent hazard to cell integrity.
2. Is there evidence of erosion (wind or water) on the cover?		X	
3. Is there any waste exposed?		X	
4. Are there signs of unauthorized use?		X	
5. Is there vegetation up against the fencing (inside or outside)?		X	
6. Is there damage to or a break in the fencing or fenceposts?		X	
7. Is there trash or debris within the fenced area?		X	
Are there any other issues not specifically described in this checklist?		X	

<b>D. FIELD CONCLUSIONS</b>	YES	NO	EXPLANATION (required if shaded box is checked)
1. Have photographs of the site been taken?		X	
2. Is there an imminent hazard to the integrity of the landfill cover?		X	

**Notes:**

N/A

**E. INSPECTION PERSONNEL:** Chris Andres, Shantae Greene, Meghan Lyle, Jennifer Carr, Mary Young, Meghann Hurt, and Alex McCarty.

Inspector Signature &amp; Date:

ALEXANDER  
MCCARTY (Affiliate)

Digitally signed by ALEXANDER  
MCCARTY (Affiliate)  
Date: 2024.05.06 16:04:34  
-06'00'

**POST-CLOSURE INSPECTION CHECKLIST****CAU 424, AREA 3 LANDFILL COMPLEXES (TTR) – CAS 03-08-002-A302, LANDFILL CELL A3-2**

Inspection Date: 4/23/24

Reason for Inspection: Annual

Date of Last Post-Closure Inspection: 5/31/23

Reason for Last Post-Closure Inspection: Annual

Inspector (name, title, organization): Alex McCarty, Site Lead, RSI

**A. GENERAL INSTRUCTIONS**

- **Visual inspection includes features described in this checklist.**
- Field notes are not required if the checklist and associated attachments adequately describe site conditions.
- Photographs are not required but may be taken to document maintenance/repair needs, anomalous features, or new features (such as changes in adjacent area land use).

<b>B. PREPARATION</b> (To be completed prior to the site visit)	YES	NO	EXPLANATION (required if shaded box is checked)
1. Were anomalies or trends detected on previous inspections?		X	
2. Were maintenance or repairs performed since the last inspection?		X	

**C. SITE INSPECTION** (To be completed during the site visit)

<b>UR Signs/Landfill Markers:</b>	YES	NO	EXPLANATION (required if shaded box is checked)
1. Are all use restriction signs present and legible?	X		
2. Have any of the monuments been disturbed or damaged?		X	
<b>Waste Unit Cover:</b>	YES	NO	EXPLANATION (required if shaded box is checked)
1. Is there evidence of subsidence, settling or cracking, water ponding, or animal burrows on the cover?	X		Several small animal burrows were observed on the cell. Burrows do not pose an imminent hazard to the integrity of the cell.
2. Is there evidence of erosion (wind or water) on the cover?		X	
3. Is there any waste exposed?		X	
3. Are there signs of unauthorized use?		X	
Are there any other issues not specifically described in this checklist?	X		A Bulldozer was leveling the road next to the cell. Leveling operations were very close to the UR boundary. However, the Bulldozer did not pose an imminent hazard to the integrity of the cell.

<b>D. FIELD CONCLUSIONS</b>	YES	NO	EXPLANATION (required if shaded box is checked)
1. Have photographs of the site been taken?		X	
2. Is there an imminent hazard to the integrity of the landfill cover?		X	

**Notes:**

During the time of inspection, a Bulldozer was leveling out the dirt road next to the cell. Grading work was within 2 feet of UR Boundary. There were no imminent hazards caused by grading activities.

**E. INSPECTION PERSONNEL: Chris Andres, Shantae Greene, Meghan Lyle, Jennifer Carr, Mary Young, Meghann Hurt, and Alex McCarty.**

Inspector Signature &amp; Date:

ALEXANDER  
MCCARTY (Affiliate)

Digitally signed by ALEXANDER  
MCCARTY (Affiliate)  
Date: 2024.05.06 16:14:19  
-06'00'



**POST-CLOSURE INSPECTION CHECKLIST****CAU 424, AREA 3 LANDFILL COMPLEXES (TTR) – CAS 03-08-002-A303, LANDFILL CELL A3-3**

Inspection Date: 4/23/24

Reason for Inspection: Annual

Date of Last Post-Closure Inspection: 5/31/23

Reason for Last Post-Closure Inspection: Annual

Inspector (name, title, organization): Alex McCarty, Site Lead, RSI

**A. GENERAL INSTRUCTIONS**

- **Visual inspection includes features described in this checklist.**
- Field notes are not required if the checklist and associated attachments adequately describe site conditions.
- Photographs are not required but may be taken to document maintenance/repair needs, anomalous features, or new features (such as changes in adjacent area land use).

<b>B. PREPARATION</b> (To be completed prior to the site visit)	YES	NO	EXPLANATION (required if shaded box is checked)
1. Were anomalies or trends detected on previous inspections?	<input type="checkbox"/>	<input checked="" type="checkbox"/>	
2. Were maintenance or repairs performed since the last inspection?	<input type="checkbox"/>	<input checked="" type="checkbox"/>	

**C. SITE INSPECTION** (To be completed during the site visit)

<b>UR Signs/Landfill Markers:</b>	YES	NO	EXPLANATION (required if shaded box is checked)
1. Are all use restriction signs present and legible?	<input checked="" type="checkbox"/>	<input type="checkbox"/>	
2. Have any of the monuments been disturbed or damaged?	<input type="checkbox"/>	<input checked="" type="checkbox"/>	
3. Have any of the ground-flush survey markers been disturbed or damaged?	<input type="checkbox"/>	<input checked="" type="checkbox"/>	The survey marker on the northeast corner of A303 (West) is obstructed by a vehicle tire. The vehicle is parked on top of the survey marker making identification difficult.
<b>Waste Unit Cover:</b>	YES	NO	EXPLANATION (required if shaded box is checked)
1. Is there evidence of subsidence, settling or cracking, water ponding, or animal burrows on the cover?	<input type="checkbox"/>	<input checked="" type="checkbox"/>	
2. Is there evidence of erosion (wind or water) on the cover?	<input type="checkbox"/>	<input checked="" type="checkbox"/>	
3. Is there any waste exposed?	<input type="checkbox"/>	<input checked="" type="checkbox"/>	
4. Are there signs of unauthorized use?	<input type="checkbox"/>	<input checked="" type="checkbox"/>	
Are there any other issues not specifically described in this checklist?	<input type="checkbox"/>	<input checked="" type="checkbox"/>	

<b>D. FIELD CONCLUSIONS</b>	YES	NO	EXPLANATION (required if shaded box is checked)
1. Have photographs of the site been taken?	<input type="checkbox"/>	<input checked="" type="checkbox"/>	
2. Is there an imminent hazard to the integrity of the landfill covers?	<input type="checkbox"/>	<input checked="" type="checkbox"/>	

**Notes:**

Installation of monuments or concrete boundary markers on A303 (East) could help to protect cell integrity and field identification. The survey marker on the northeast corner of A303 (West) is obstructed by a vehicle tire. The vehicle is parked on top of the survey marker making identification difficult.


**E. INSPECTION PERSONNEL: Chris Andres, Shantae Greene, Meghan Lyle, Jennifer Carr, Mary Young, Meghann Hurt, and Alex McCarty.**

Inspector Signature &amp; Date:

ALEXANDER

MCCARTY (Affiliate)

Digitally signed by ALEXANDER  
MCCARTY (Affiliate)  
Date: 2024.05.06 16:19:16 -06'00'

**POST-CLOSURE INSPECTION CHECKLIST****CAU 424, AREA 3 LANDFILL COMPLEXES (TTR) – CAS 03-08-002-A304, LANDFILL CELL A3-4**

Inspection Date: 4/23/24

Reason for Inspection: Annual

Date of Last Post-Closure Inspection: 5/31/23

Reason for Last Post-Closure Inspection: Annual

Inspector (name, title, organization): Alex McCarty, Site Lead, RSI

**A. GENERAL INSTRUCTIONS**

- **Visual inspection includes features described in this checklist.**
- Field notes are not required if the checklist and associated attachments adequately describe site conditions.
- Photographs are not required but may be taken to document maintenance/repair needs, anomalous features, or new features (such as changes in adjacent area land use).

<b>B. PREPARATION</b> (To be completed prior to the site visit)	YES	NO	EXPLANATION (required if shaded box is checked)
1. Were anomalies or trends detected on previous inspections?	<input checked="" type="checkbox"/>	<input checked="" type="checkbox"/>	
2. Were maintenance or repairs performed since the last inspection?	<input checked="" type="checkbox"/>	<input checked="" type="checkbox"/>	

**C. SITE INSPECTION** (To be completed during the site visit)

<b>UR Signs/Landfill Markers:</b>	YES	NO	EXPLANATION (required if shaded box is checked)
1. Are all use restriction signs present and legible?	<input checked="" type="checkbox"/>	<input type="checkbox"/>	
2. Have any of the monuments been disturbed or damaged?	<input type="checkbox"/>	<input checked="" type="checkbox"/>	
<b>Waste Unit Cover:</b>	YES	NO	EXPLANATION (required if shaded box is checked)
1. Is there evidence of subsidence, settling or cracking, water ponding, or animal burrows on the cover?	<input checked="" type="checkbox"/>	<input type="checkbox"/>	Several small animal burrows were observed on the cell. Burrows do not pose an imminent hazard to the integrity of the cell.
2. Is there evidence of erosion (wind or water) on the cover?	<input type="checkbox"/>	<input checked="" type="checkbox"/>	
3. Is there any waste exposed?	<input type="checkbox"/>	<input checked="" type="checkbox"/>	
3. Are there signs of unauthorized use?	<input type="checkbox"/>	<input checked="" type="checkbox"/>	
Are there any other issues not specifically described in this checklist?	<input type="checkbox"/>	<input checked="" type="checkbox"/>	
<b>D. FIELD CONCLUSIONS</b>	YES	NO	EXPLANATION (required if shaded box is checked)
1. Have photographs of the site been taken?	<input type="checkbox"/>	<input checked="" type="checkbox"/>	
2. Is there an imminent hazard to the integrity of the landfill covers?	<input type="checkbox"/>	<input checked="" type="checkbox"/>	

**Notes:**

A large 7x7-foot area of densely packed burrows was identified during inspection. Additionally, a 8-inch wide burrow was also discovered on the cell. At this time, the burrows do not pose an imminent hazard to the integrity of the cell.

**E. INSPECTION PERSONNEL: Chris Andres, Shantae Greene, Meghan Lyle, Jennifer Carr, Mary Young, Meghann Hurt, and Alex McCarty.**

Inspector Signature &amp; Date:

ALEXANDER

MCCARTY (Affiliate)

Digitally signed by ALEXANDER  
MCCARTY (Affiliate)  
Date: 2024.05.06 16:25:41 -06'00'

**POST-CLOSURE INSPECTION CHECKLIST****CAU 424, AREA 3 LANDFILL COMPLEXES (TTR) – CAS 03-08-002-A305, LANDFILL CELL A3-5**

Inspection Date: 4/23/24

Reason for Inspection: Annual

Date of Last Post-Closure Inspection: 5/31/23

Reason for Last Post-Closure Inspection: Annual

Inspector (name, title, organization): Alex McCarty, Site Lead, RSI

**A. GENERAL INSTRUCTIONS**

- **Visual inspection includes features described in this checklist.**
- Field notes are not required if the checklist and associated attachments adequately describe site conditions.
- Photographs are not required but may be taken to document maintenance/repair needs, anomalous features, or new features (such as changes in adjacent area land use).

<b>B. PREPARATION</b> (To be completed prior to the site visit)	YES	NO	EXPLANATION (required if shaded box is checked)
1. Were anomalies or trends detected on previous inspections?	<input checked="" type="checkbox"/>		Survey maker, not previously identified, observed during inspection.
2. Were maintenance or repairs performed since the last inspection?		<input checked="" type="checkbox"/>	

**C. SITE INSPECTION** (To be completed during the site visit)

<b>UR Signs, Monuments, and Markers:</b>	YES	NO	EXPLANATION (required if shaded box is checked)
1. Are all use restriction signs present and legible?	<input checked="" type="checkbox"/>		
2. Have any of the monuments been disturbed or damaged?		<input checked="" type="checkbox"/>	
<b>Waste Unit Cover:</b>	YES	NO	EXPLANATION (required if shaded box is checked)
1. Is there evidence of subsidence, settling or cracking, water ponding, or animal burrows on the cover?		<input checked="" type="checkbox"/>	
2. Is there evidence of erosion (wind or water) on the cover?		<input checked="" type="checkbox"/>	
3. Is there any waste exposed?		<input checked="" type="checkbox"/>	
4. Are there signs of unauthorized use?	<input checked="" type="checkbox"/>		Multiple tire tracks were observed on top of cell. Tracks do not pose an imminent hazard to the integrity of the cell.
Are there any other issues not specifically described in this checklist?		<input checked="" type="checkbox"/>	

<b>D. FIELD CONCLUSIONS</b>	YES	NO	EXPLANATION (required if shaded box is checked)
1. Have photographs of the site been taken?		<input checked="" type="checkbox"/>	
2. Is there an imminent hazard to the integrity of the landfill cover?		<input checked="" type="checkbox"/>	

**Notes:**

Multiple tire tracks were observed on top of the cell. These tracks emanate from a nearby well construction project. During the inspection we were able to discuss vehicle use with the Construction Site Manager. Additionally, USAF representatives were also informed of the issue. They assured us that they will take steps to eliminate driving on top of the landfill. Currently, these tracks do not pose an imminent hazard. It is possible that continued driving over the cell could increase erosion or damage the cell.

**E. INSPECTION PERSONNEL: Chris Andres, Shantae Greene, Meghan Lyle, Jennifer Carr, Mary Young, Meghann Hurt, and Alex McCarty.**

Inspector Signature &amp; Date:

ALEXANDER

MCCARTY (Affiliate)

Digitally signed by ALEXANDER  
MCCARTY (Affiliate)  
Date: 2024.05.06 16:30:31 -06'00'

**POST-CLOSURE INSPECTION CHECKLIST****CAU 424, AREA 3 LANDFILL COMPLEXES (TTR) – CAS 03-08-002-A306, LANDFILL CELL A3-6**

Inspection Date: 4/23/24

Reason for Inspection: Annual

Date of Last Post-Closure Inspection: 5/31/23

Reason for Last Post-Closure Inspection: Annual

Inspector (name, title, organization): Alex McCarty, Site Lead, RSI

**A. GENERAL INSTRUCTIONS**

- **Visual inspection includes features described in this checklist.**
- Field notes are not required if the checklist and associated attachments adequately describe site conditions.
- Photographs are not required but may be taken to document maintenance/repair needs, anomalous features, or new features (such as changes in adjacent area land use).

<b>B. PREPARATION</b> (To be completed prior to the site visit)	YES	NO	EXPLANATION (required if shaded box is checked)
1. Were anomalies or trends detected on previous inspections?	<b>X</b>		Small animal burrows present on site during last visit.
2. Were maintenance or repairs performed since the last inspection?		<b>X</b>	

**C. SITE INSPECTION** (To be completed during the site visit)

<b>UR Signs, Monuments, and Markers:</b>	YES	NO	EXPLANATION (required if shaded box is checked)
1. Are all use restriction signs present and legible?	<b>X</b>		
2. Have any of the monuments been disturbed or damaged?		<b>X</b>	
<b>Waste Unit Cover:</b>	YES	NO	EXPLANATION (required if shaded box is checked)
1. Is there evidence of subsidence, settling or cracking, water ponding, or animal burrows, on the cover?	<b>X</b>		Several small animal burrows were observed on the cell. Burrows do not pose an imminent hazard to the integrity of the cell.
2. Is there evidence of erosion (wind or water) on the cover?		<b>X</b>	
3. Is there any waste exposed?		<b>X</b>	
4. Are there signs of unauthorized use?		<b>X</b>	
Are there any other issues not specifically described in this checklist?	<b>X</b>		Metal debris exposed on surface. Sign denoting the presence of metal debris on cell.

<b>D. FIELD CONCLUSIONS</b>	YES	NO	EXPLANATION (required if shaded box is checked)
1. Have photographs of the site been taken?		<b>X</b>	
2. Is there an imminent hazard to the integrity of the landfill covers?		<b>X</b>	

**Notes:**

The southwest monument had several animal burrows surrounding the base. While not an imminent hazard, these burrows could potentially cause instability to the monument.

**E. INSPECTION PERSONNEL: Chris Andres, Shantae Greene, Meghan Lyle, Jennifer Carr, Mary Young, Meghann Hurt, and Alex McCarty.**

Inspector Signature &amp; Date:

ALEXANDER

MCCARTY (Affiliate)

Digitally signed by ALEXANDER  
MCCARTY (Affiliate)  
Date: 2024.05.06 16:34:31 -06'00'

**POST-CLOSURE INSPECTION CHECKLIST****CAU 424, AREA 3 LANDFILL COMPLEXES (TTR) – CAS 03-08-002-A308, LANDFILL CELL A3-8**

Inspection Date: 4/23/24

Reason for Inspection: Annual

Date of Last Post-Closure Inspection: 5/31/23

Reason for Last Post-Closure Inspection: Annual

Inspector (name, title, organization): Alex McCarty, Site Lead, RSI

**A. GENERAL INSTRUCTIONS**

- **Visual inspection includes features described in this checklist.**
- Field notes are not required if the checklist and associated attachments adequately describe site conditions.
- Photographs are not required but may be taken to document maintenance/repair needs, anomalous features, or new features (such as changes in adjacent area land use).

<b>B. PREPARATION</b> (To be completed prior to the site visit)	YES	NO	EXPLANATION (required if shaded box is checked)
1. Were anomalies or trends detected on previous inspections?		X	
2. Were maintenance or repairs performed since the last inspection?		X	

**C. SITE INSPECTION** (To be completed prior to the site visit)

<b>UR Signs, Monuments, and Markers:</b>	YES	NO	EXPLANATION (required if shaded box is checked)
1. Are all use restriction signs present and legible?	X		
2. Have any of the ground-flush survey markers been disturbed or damaged?		X	
<b>Waste Unit Cover:</b>	YES	NO	EXPLANATION (required if shaded box is checked)
1. Is there evidence of subsidence, settling or cracking, water ponding, or animal burrows on the cover?		X	
2. Is there evidence of erosion (wind or water) on the cover?		X	
3. Is there any waste exposed?		X	
4. Are there signs of unauthorized use?		X	
Are there any other issues not specifically described in this checklist?		X	
<b>D. FIELD CONCLUSIONS</b>	YES	NO	EXPLANATION (required if shaded box is checked)
1. Have photographs of the site been taken?		X	
2. Is there an imminent hazard to the integrity of the landfill covers?		X	

**Notes:**

Additional rocks were placed on survey markers to assist with future field identification.

**E. INSPECTION PERSONNEL: Mary Young, Meghann Hurt, and Alex McCarty.**

Inspector Signature &amp; Date:

ALEXANDER

MCCARTY (Affiliate)

 Digitally signed by ALEXANDER  
 MCCARTY (Affiliate)  
 Date: 2024.05.06 16:41:18 -06'00'

**POST-CLOSURE INSPECTION CHECKLIST****CAU 453, AREA 9 UXO LANDFILL (TTR) – CAS 09-55-001-0952, AREA 9 LANDFILL**

Inspection Date: 4/23/24

Reason for Inspection: Annual

Date of Last Post-Closure Inspection: 5/31/23

Reason for Last Post-Closure Inspection: Annual

Inspector (name, title, organization): Alex McCarty, Site Lead, RSI

**A. GENERAL INSTRUCTIONS**

- **Visual inspection includes features described in this checklist.**
- Field notes are not required if the checklist and associated attachments adequately describe site conditions.
- Photographs are not required but may be taken to document maintenance/repair needs, anomalous features, or new features (such as changes in adjacent area land use).

<b>B. PREPARATION</b> (To be completed prior to the site visit)	YES	NO	EXPLANATION (required if shaded box is checked)
1. Were anomalies or trends detected on previous inspections?	X		Six animal burrows were found on the south trenches. Burrows were filled in with dirt. Water erosion migrating towards animal burrows was observed. Erosion did not pose a risk to the cell at the time.
2. Were maintenance or repairs performed since the last inspection?	X		Repair of animal burrows noted above.

**C. SITE INSPECTION** (To be completed during the site visit)

<b>UR Signs, Monuments, and Markers:</b>	YES	NO	EXPLANATION (required if shaded box is checked)
1. Are all use restriction signs present and legible?	X		
2. Have any of the monuments been disturbed or damaged?		X	
<b>Waste Unit Cover/Fenced Area:</b>	YES	NO	EXPLANATION (required if shaded box is checked)
1. Is there evidence of subsidence, settling or cracking, water ponding, or animal burrows on the cover?	X		Several animal burrows were observed on cover. Cracking was observed by the northern trench. Cracking was filled with dirt. The burrows and cracking did not present an imminent hazard to the cell cover.
2. Is there evidence of erosion (wind or water) on the cover?	X		Minor erosion observed on the mound of soil on the northwestern side of the cell. Erosion did not present an imminent hazard to the cell cover.
3. Is there any waste exposed?		X	
4. Are there signs of unauthorized use?		X	
5. Is there vegetation up against the fencing (inside or outside)?		X	
6. Is there damage to or a break in the fencing or fenceposts (signs of wear)?		X	
7. Is there trash or debris within the fenced area?	X		Metal debris observed on cover. Debris was partially buried in the soil. Metal ring as well as a nail attached to wire was observed.
Are there any other issues not specifically described in this checklist?	X		Combination lock to gate had to be cut to access cell.
<b>D. FIELD CONCLUSIONS</b>	YES	NO	EXPLANATION (required if shaded box is checked)
1. Have photographs of the site been taken?		X	
2. Is there an imminent hazard to the integrity of the landfill cover?		X	

**Notes:**

The combination lock securing the gate to CAU 453 had to be cut to access the cell. The lock has been replaced with a keyed lock. Future site visits will need to be coordinated with Sandia Facility Security Officer to obtain access.

**E. INSPECTION PERSONNEL** Chris Andres, Jennifer Carr, Shantae Green, Meghan Lyle, Mary Young, Meghann Hurt and Alex McCarty.

Inspector Signature &amp; Date:

ALEXANDER  
MCCARTY (Affiliate)

Digitally signed by ALEXANDER  
MCCARTY (Affiliate)  
Date: 2024.05.06 16:48:05 -06'00'



## **Appendix D**

### **Field Notes**

All observations are recorded on the postclosure inspection checklists presented in Appendix C.  
Additional field notes were not created in 2024.



## **Appendix E**

### **Photographs**

Photographs were not taken during 2024.

## **Appendix F**

### **NDEP Correspondence and Record of Review**



NEVADA DIVISION OF  
**ENVIRONMENTAL  
PROTECTION**

STATE OF NEVADA  
Department of Conservation & Natural Resources

Joe Lombardo, *Governor*  
James A. Settelmeyer, *Director*  
Jennifer L. Carr, *Administrator*

February 13, 2025

Ms. Mary Young  
Site Manager  
U.S. Department of Energy  
Office of Legacy Management  
2597 Legacy Way  
Grand Junction, CO 81503

RE: Submittal of Draft Postclosure Inspection Report for the Tonopah Test Range and Nevada Test and Training Range, Nevada, Sites for Calendar Year 2024  
*Federal Facility Agreement and Consent Order (FFACO)*

Dear Ms. Young:

The Nevada Division of Environmental Protection, Bureau of Federal Facilities (NDEP) has reviewed the *Draft Postclosure Inspection Report for the Tonopah Test Range and Nevada Training Range, Nevada, Sites for Calendar Year 2024* (Report), received electronically on February 10, 2025. Receipt of this Report fulfills the Federal Facility Agreement and Consent Order milestone deadline of June 6, 2025, for the "TTR and NTTR Post-Closure Sites Draft CY 2024 TTR and NTTR Post-Closure Report to State." While this letter does serve as a Notice of Completion for the milestone deadline, the NDEP has the following comment, which should be addressed in the Final Report.

1. Page 3, Section 2.2, CAU 424, CAS 03-08-002-A303 and Appendix C, Page C-4, CAU 424, CAS 03-08-002-A303 Post-Closure Inspection Checklist, Section C Waste Unit Cover – Sections 2.2 of the Report state that several small animal burrows were observed, however, the Post-Closure Inspection Checklist is checked "no" for animal burrows. Please correct this discrepancy.

If you have any questions regarding this matter, please contact Shantae Greene at (702) 668-3902, Meghan Lyle at (702) 668-3924, or me at (702) 668-3911.

Sincerely,

Christine D. Andres  
Chief  
Bureau of Federal Facilities

CDA/ML/SG

cc: Shantae Greene, NDEP  
Meghan Lyle, NDEP  
FFACO Group, EM  
EM Records, EM  
MSTS Correspondence Management  
NNSA/NFO Read Files  
Valerie Mason, DTRA/RD-TSE  
Katheryn Gladden, NNSA/NFO  
Jalena Dayvault, DOE-LM  
Rick Findlay, RSI  
Alex McCarty, RSI

## Record of Review

Review requirements are described in the *Document Management Services, Resources, and Procedures* (LMS/PRO/S32818). Reviewers may document any review with this form. This form should not be converted to a PDF until all reviews are complete.

### Document Information

Due date<sup>1</sup>: 03/21/2025 Review number: 1 Project: PVW - Tonopah Test Range Charge code: \_\_\_\_\_

Document title, number, and revision: Submittal of Draft Postclosure Inspection Report for the Tonopah Test Range and Nevada Test and Training Range, Nevada, Sites for Calander Year 2024

Author: Mary Young Author's phone: 970-712-4992 Author's organization: LM

Reviewer: Christine Andres Reviewer's phone: (702) 486-2850 ext 232 Reviewer's organization: NDEP

Reviewer's recommendation: ☐ Release without comment ☐ Consider comments ☒ Resolve comments and reroute for review Date<sup>2</sup>: 02/13/2025

Author's response: ☒ Comments have been addressed Date<sup>2</sup>: 02/26/2025

Reviewer's response to comment resolution: ☒ Satisfactory Date<sup>2</sup>: \_\_\_\_\_

Author signifies all comments resolved successfully: \_\_\_\_\_ Date: 03/04/25

<sup>1</sup> Failure to respond to the review request will be considered approval or issuing the document as written.

<sup>2</sup> Reviewer or author signature not required. Authorization implied by completing date field and submittal of review.

<sup>3</sup> If the author or reviewer is dissatisfied with the resolution, the matter may be elevated to the next level of management. If an impasse develops, management must resolve the issue.

Item Number	Reviewer's Comments and Recommendations	Required	Author's Response (if required)
1	Page 3. Section 2.2, CAU 424, CAS 03-08-002-A303 and Appendix C, Page C-4, CAU 424, CAS 03-002-A303 Post-Closure Inspection Checklist, Section C Waste Unit Cover - Sections 2.2 of the Report state that several small animal burrows were observed, however, the Post-Closure Inspection Checklist is checked "no" for animal burrows. Please correct this discrepancy.	Yes	The sentence "Several small animal burrows were observed on the cell, but the burrows did not pose an imminent hazard to the integrity of the cell cover" on Page 3. Section 2.2 was deleted.  The inspection checklist is correct. The discrepancy was in the report. No animal burrows were present at CAU 424 – A303.

## Record of Review

Item Number	Reviewer's Comments and Recommendations	Required	Author's Response (if required)

## Library Distribution List

### Copies

U.S. Department of Energy  
Office of Scientific and Technical Information  
P.O. Box 62  
Oak Ridge, TN 37831-0062  
(865) 576-8401

1 (Uncontrolled, electronic copy)

Southern Nevada Public Reading Facility  
c/o Nuclear Testing Archive  
P.O. Box 98521, M/S 400  
Las Vegas, NV 89193-8521

2 (Uncontrolled, electronic copies)

Manager, Northern Nevada FFACO  
Public Reading Facility  
c/o Nevada State Library, Archives, and Public Records  
100 N Stewart Street  
Carson City, NV 89701-4285  
(775) 684-3313

1 (Uncontrolled, electronic copy)