

**2025
CCH-3 Vegetation Monitoring,
Bronco, Colorado, Site**

October 2025



U.S. DEPARTMENT OF
ENERGY

Legacy
Management

Contents

Abbreviations	ii
Executive Summary	iii
1.0 Introduction	1
2.0 Reclamation and Success Criteria	1
3.0 Results	2
4.0 Discussion	2
5.0 References	3

Figures

Figure 1. Vegetation Monitoring Locations at Bronco CCH-3	4
Figure 2. Monitoring Location 1, Bronco, Colorado, Site.....	5
Figure 3. Monitoring Location 2, Bronco, Colorado, Site.....	6
Figure 4. Monitoring Location 3, Bronco, Colorado, Site.....	7
Figure 5. Monitoring Location 4, Bronco, Colorado, Site.....	8
Figure 6. Monitoring Location 5, Bronco, Colorado, Site.....	9
Figure 7. Monitoring Location 6, Bronco, Colorado, Site.....	10
Figure 8. Monitoring Location 7, Bronco, Colorado, Site.....	11
Figure 9. Overview of Reclaimed Road, Bronco, Colorado, Site.....	12

Table

Table 1. Data Comparison of DPC, Success Criteria, and Annual Monitoring Results.....	2
---------------------------------------------------------------------------------------	---

Appendix

Appendix A Comprehensive Data	
-------------------------------	--

Abbreviations

AEC	U.S. Atomic Energy Commission
BLM	U.S. Bureau of Land Management
CCH-3	Colorado Core Hole No. 3
DPC	desired plant community
LM	Office of Legacy Management

Executive Summary

Comprehensive data from 2020–2025 revegetation monitoring at the Bronco, Colorado, Site demonstrate that reclamation efforts have been successful in meeting reclamation criteria. In addition to successful abandonment of the Colorado Core Hole No. 3 (CCH-3) well and revegetation, reclamation efforts assisted the U.S. Bureau of Land Management (BLM) in closing the road leading to the well pad to public use and the area resembles the natural state of the surrounding land. Although the site exhibits small, localized patches of undesirable species (prickly Russian thistle and cheatgrass), these species do not require targeted management per state and federal regulations. However, as a best management practice and at the request of BLM, the U.S. Department of Energy Office of Legacy Management (LM) treated prickly Russian thistle with herbicide in 2025. Cheatgrass is abundant in the rangeland surrounding the Colorado Core Hole No. 3 (CCH-3) site. Excluding cheatgrass cover from monitoring data would result in all success criteria being within the accepted range. Furthermore, reclamation efforts have provided a higher abundance of desirable native species than before the project started (2020: 62%, 2025: 82%). This comprehensive 2020–2025 Bronco site CCH-3 vegetation monitoring report shows the site is within accepted reclamation standards.

1.0 Introduction

This report documents revegetation success monitoring following reclamation work at the Bronco, Colorado, Site at the Project Bronco U.S. Bureau of Mines and U.S. Atomic Energy Commission (AEC) Colorado Core Hole No. 3 (CCH-3) well. Reclamation work included CCH-3 well plugging and abandonment, soil stabilization, downed timber distribution, seed bed preparation, and broadcast seeding the area surrounding the well and the road leading to the well pad. The well was drilled by AEC, a predecessor agency to the U.S. Department of Energy, in 1967. The Bronco site is on land managed by the U.S. Bureau of Land Management (BLM) in SWSW, Section 14, T1N, R98W 6th PM, in Rio Blanco County, Colorado (Figure 1), within U.S. Geological Survey right-of-way COC49117. The well was successfully abandoned in October 2020, and reclamation activities were completed in November 2020. Revegetation success monitoring has been conducted annually since reclamation was completed (DOE 2021; DOE 2022; DOE 2023; DOE 2024).

2.0 Reclamation and Success Criteria

Reclamation activities (including soil stabilization and revegetation) followed methods listed in the *Reclamation Plan for Project Bronco Well Abandonment, Rio Blanco County, Colorado* (DOE 2020) and took place October 26 through November 6, 2020. Monitoring methods follow the *Surface Reclamation Plan* (BLM 2007) and *BLM Core Terrestrial Indicators and Methods, Tech Note 440* (MacKinnon et al. 2011) and monitoring has been conducted annually since the site was reclaimed. To demonstrate reclamation success, annual vegetation monitoring data (Appendix A) are compared to the desired plant community (DPC) data and the following criteria:

1. Self-sustaining vegetative groundcover is (1) consistent with the site DPC and (2) adequately established on disturbed surfaces to stabilize soils through the life of the project.
2. Vegetation¹ will have 80% similarity of foliar cover, bare ground, and shrub or forb density in relation to the identified DPC.
3. To ensure that site species diversity is achieved, the resulting plant community (i.e., species richness) must be composed of at least five desirable plant species, and no one species may exceed 70% relative cover. Desirable species may include native species from the surrounding area; species listed in the range or ecological site description, assessment, inventory, and monitoring data, or at the reference site; or species from the BLM-approved seed mix.

¹ Vegetative cover values for woodland or shrubland sites (such as at Bronco CCH-3) are based on the capability of those sites in a herbaceous state.

3.0 Results

Six permanent monitoring locations were established for annual vegetation monitoring data collection. A seventh monitoring location was added during 2021 monitoring to ensure that data collection adequately captured the entire project area. Average values from the monitoring locations, comparisons to the DPC data, and success criteria are in Table 1. Photographs of each monitoring location are in Figure 2 through Figure 8.

Table 1. Data Comparison of DPC, Success Criteria, and Annual Monitoring Results

Metric	DPC	Success Criteria (80% similarity of DPC)	2021	2022	2023	2024	2025
Total foliar cover (% absolute cover)	40	40 ± 8	13	31	47	37	42
Bare ground (% absolute cover)	31	31 ± 6	46	31	18^a	18	23
Desirable foliar cover (% relative cover)	67 (27)	67 ± 13	62	51	70	87	82 (35)
Undesirable foliar cover (% relative cover)	8	8 ± 2	11	40	25	2	16 ^b
Forb foliar cover (% relative cover)	20	20 ± 4	10	57^a	49^a	28	28
Shrub foliar cover (% relative cover)	49	49 ± 10	33	16^a	11^a	26	26
Species richness (Number of dominant species)	25	25 ± 5	13	23	23	21	23

Notes:

Bold values indicate data are within success criteria.

^a Vegetative cover values for woodland or shrubland sites (such as at Bronco CCH-3) are based on the capability of those sites in a herbaceous state.

^b Predisturbance monitoring indicated 8% undesirable foliar cover in the revegetated area and nearby BLM Assessment, Inventory, and Monitoring data ranged from 0–17% (BLM 2025).

4.0 Discussion

Data collected from the 2025 monitoring demonstrate that reclamation efforts have been successful. In addition to successful well abandonment and revegetation, reclamation efforts assisted BLM in closing the road leading to the well to public use and the area resembles the natural state of the surrounding land (Figure 9). Reclamation efforts have provided a higher abundance of desirable native species than before the project started (2020: 62%, 2025: 82%). Desirable species are self-sustaining, as evidenced by vigor, flowering, seeding, and tillers, so they are expected to persist over the long term. Although the site exhibits small, localized patches of undesirable species (prickly Russian thistle and cheatgrass), these species do not require targeted management per state and federal regulations.² Both species are only found in

² List C Species, such as cheatgrass, are species for which local governments and other interested parties develop and implement state noxious weed management plans designed to support the efforts of local governing bodies to facilitate more effective integrated weed management on private and public lands. The goal of such plans will not be to stop the continued spread of these species but to provide additional education, research, and biological control resources to jurisdictions that choose to require management of List C species (*Colorado Revised Statutes* Sections 35-5.5-104.5 to 35-5.5-118).

relatively small amounts within the CCH-3 tract with the most notable populations coinciding with areas of heavy grazing. In 2025, at the request of BLM, LM treated prickly Russian thistle as a best management practice. Excluding cheatgrass from monitoring data would result in a 9% undesirable foliar cover, which is within success criteria. Cheatgrass populations are unlikely to be eradicated or reduced due to adjacent infestations surrounding the CCH-3 site and throughout the region. Additional revegetation and monitoring efforts are not likely to yield different results given the abundance of prickly Russian thistle and cheatgrass in surrounding areas. This comprehensive Bronco CCH-3 report shows that the site meets the accepted reclamation standards.

5.0 References

BLM (U.S. Bureau of Land Management), 2007. *Surface Reclamation Plan*, White River Field Office.

BLM (U.S. Bureau of Land Management), 2025. “Assessment, Inventory, and Monitoring (AIM),” <https://www.blm.gov/aim>, accessed August 14, 2025.

CRS 35-5.5-104.5 to 35-5.5-118. “Colorado Noxious Weed Act,” *Colorado Revised Statutes*.

DOE (U.S. Department of Energy), 2020. *Reclamation Plan for Project Bronco Well Abandonment, Rio Blanco County, Colorado*, LMS/BRO/S28743, Office of Legacy Management, March.

DOE (U.S. Department of Energy), 2021. *2021 CCH-3 Vegetation Monitoring, Bronco, Colorado, Site*, LMS/BRO/S36443, Office of Legacy Management, October.

DOE (U.S. Department of Energy), 2022. *2022 CCH-3 Vegetation Monitoring, Bronco, Colorado, Site*, LMS/BRO/42554, Office of Legacy Management, October.

DOE (U.S. Department of Energy), 2023. *2023 CCH-3 Vegetation Monitoring, Bronco, Colorado, Site*, LMS/BRO/45594, Office of Legacy Management, October.

DOE (U.S. Department of Energy), 2024. *2024 CCH-3 Vegetation Monitoring, Bronco, Colorado, Site*, LMS/BRO/48739, Office of Legacy Management, August.

MacKinnon, W.C., J.W. Karl, G.R. Toevs, J.J. Taylor, M. Karl, C.S. Spurrier, and J.E. Herrick, 2011. *BLM Core Terrestrial Indicators and Methods, Tech Note 440*, U.S. Department of the Interior, Bureau of Land Management, National Operations Center, Denver, Colorado.

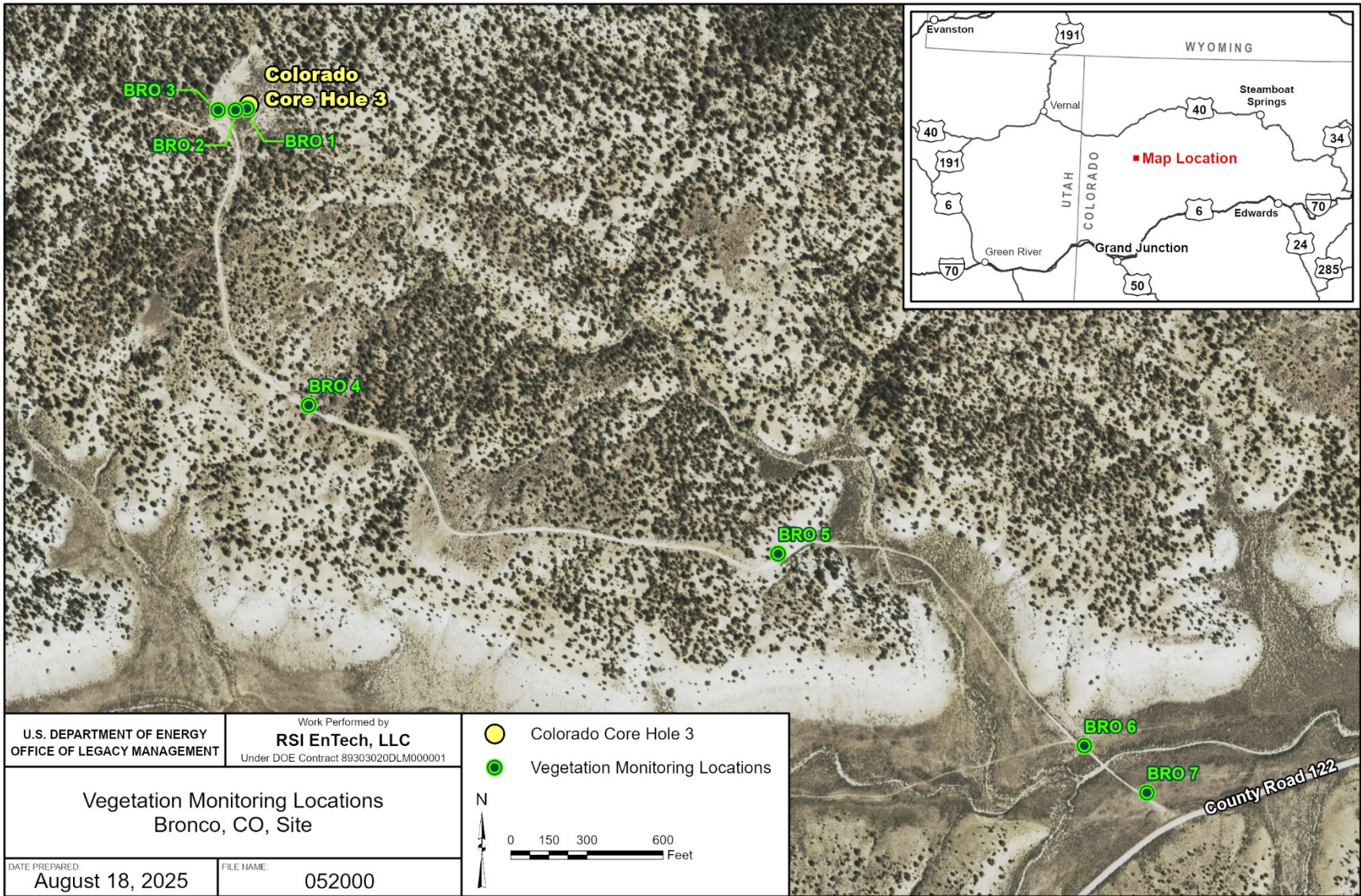


Figure 1. Vegetation Monitoring Locations at Bronco CCH-3

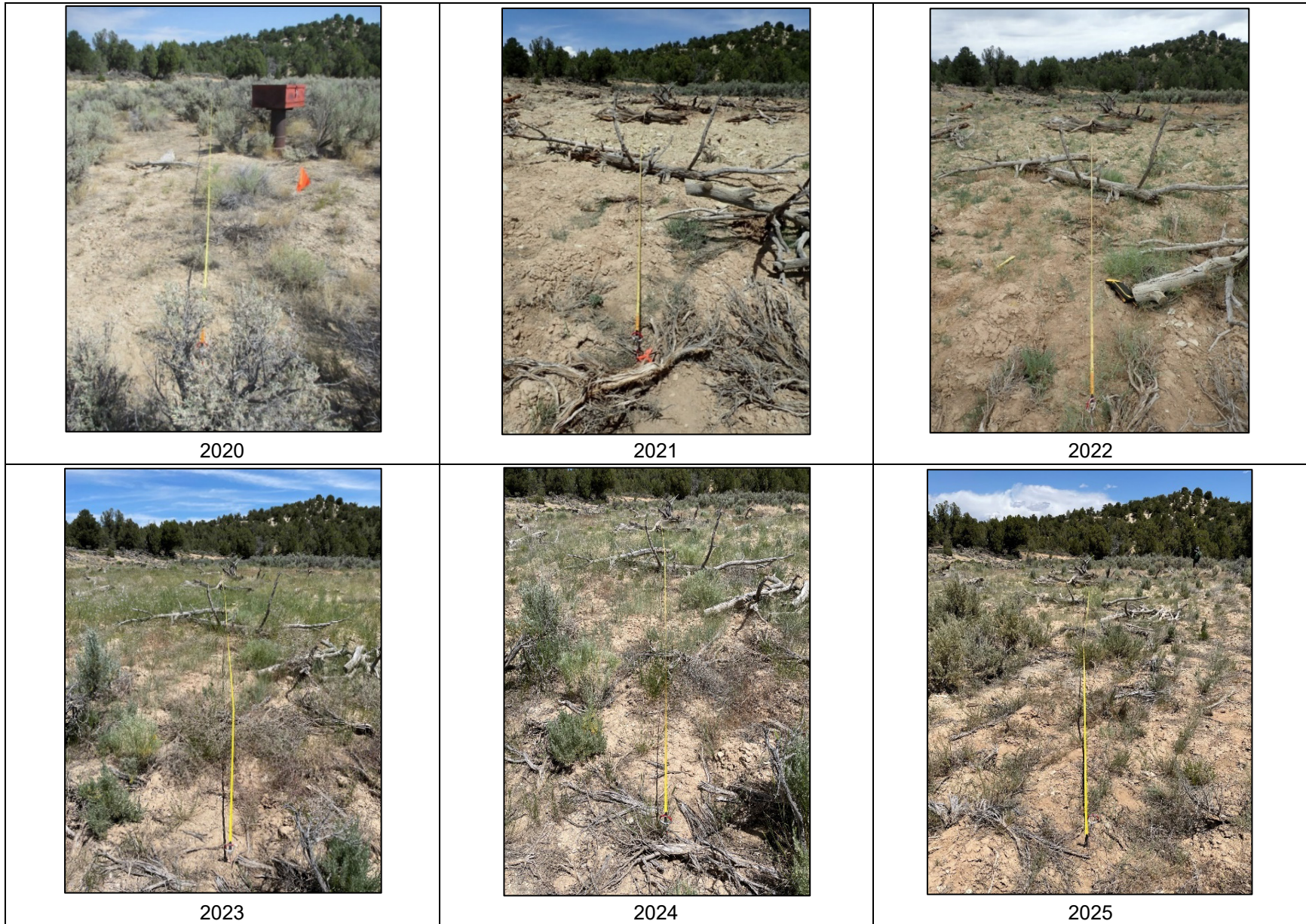


Figure 2. Monitoring Location 1, Bronco, Colorado, Site

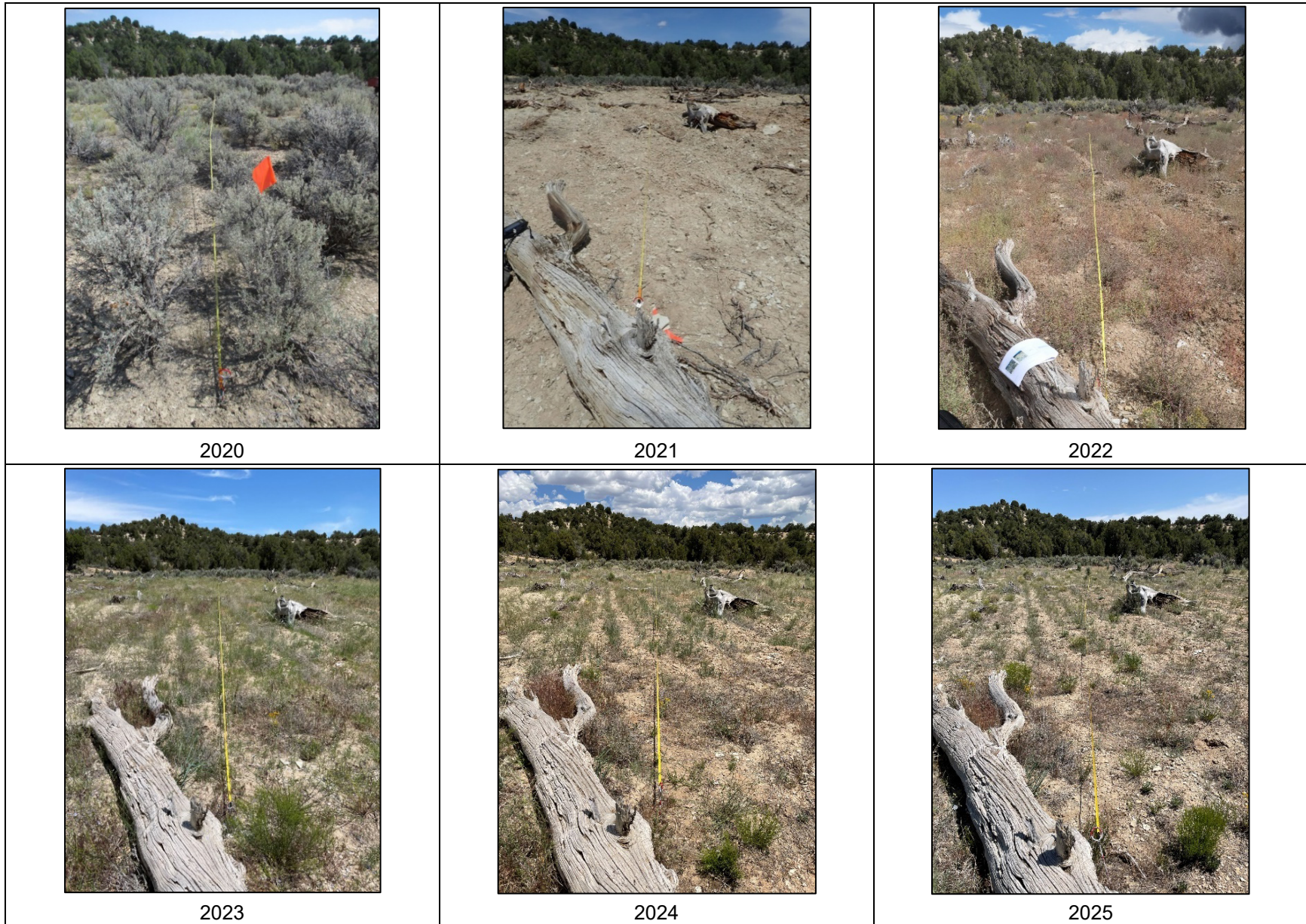


Figure 3. Monitoring Location 2, Bronco, Colorado, Site

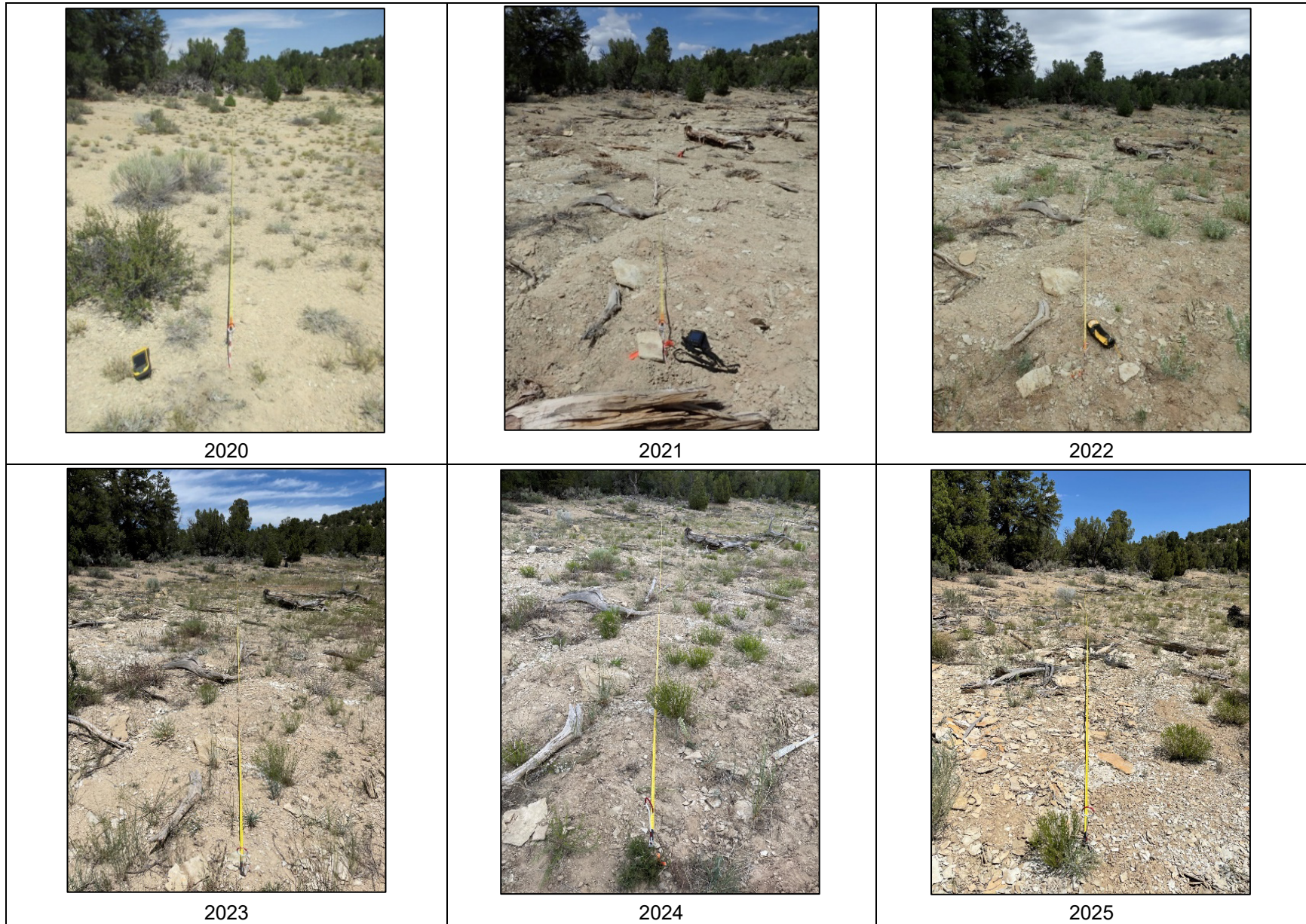


Figure 4. Monitoring Location 3, Bronco, Colorado, Site

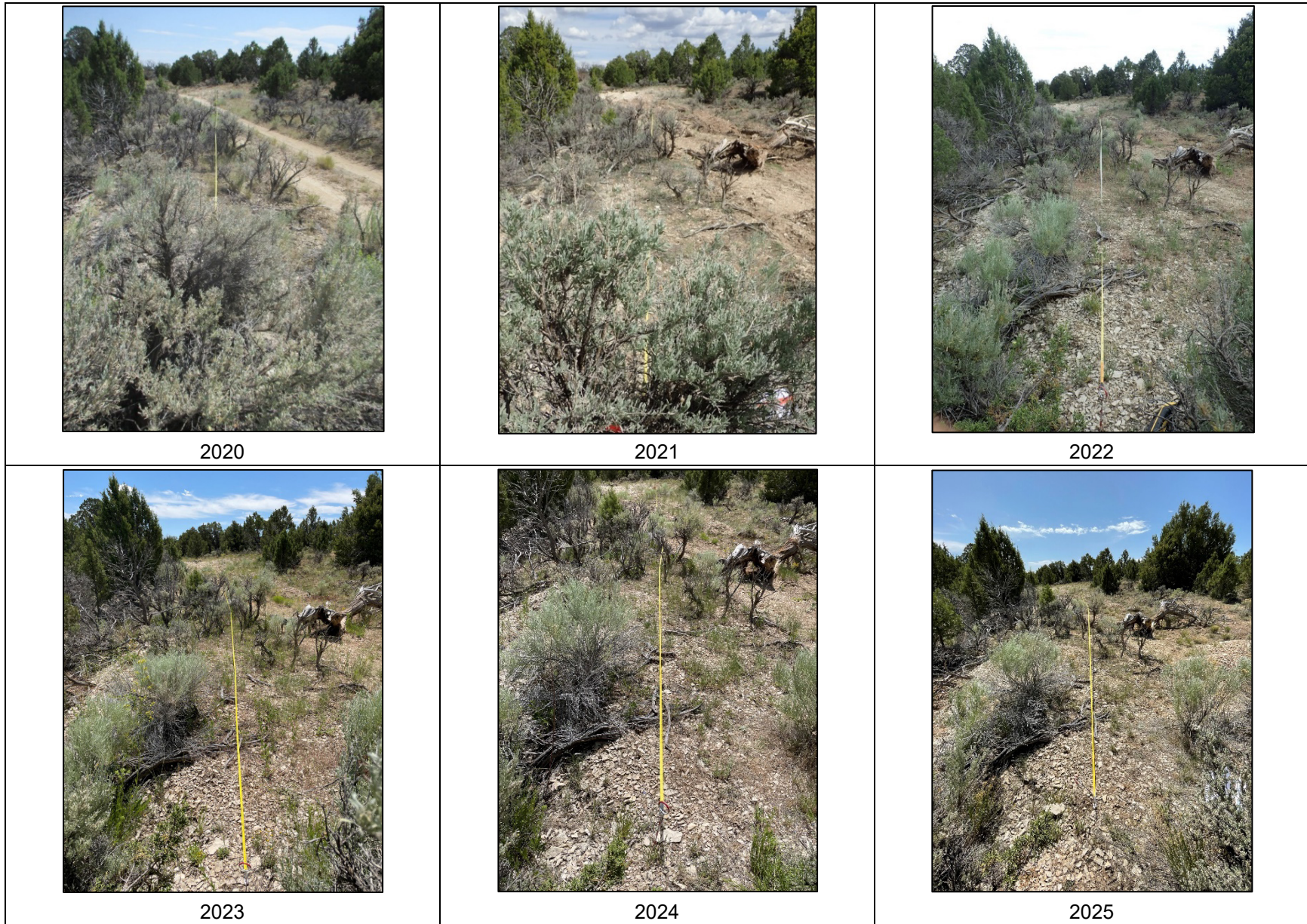


Figure 5. Monitoring Location 4, Bronco, Colorado, Site

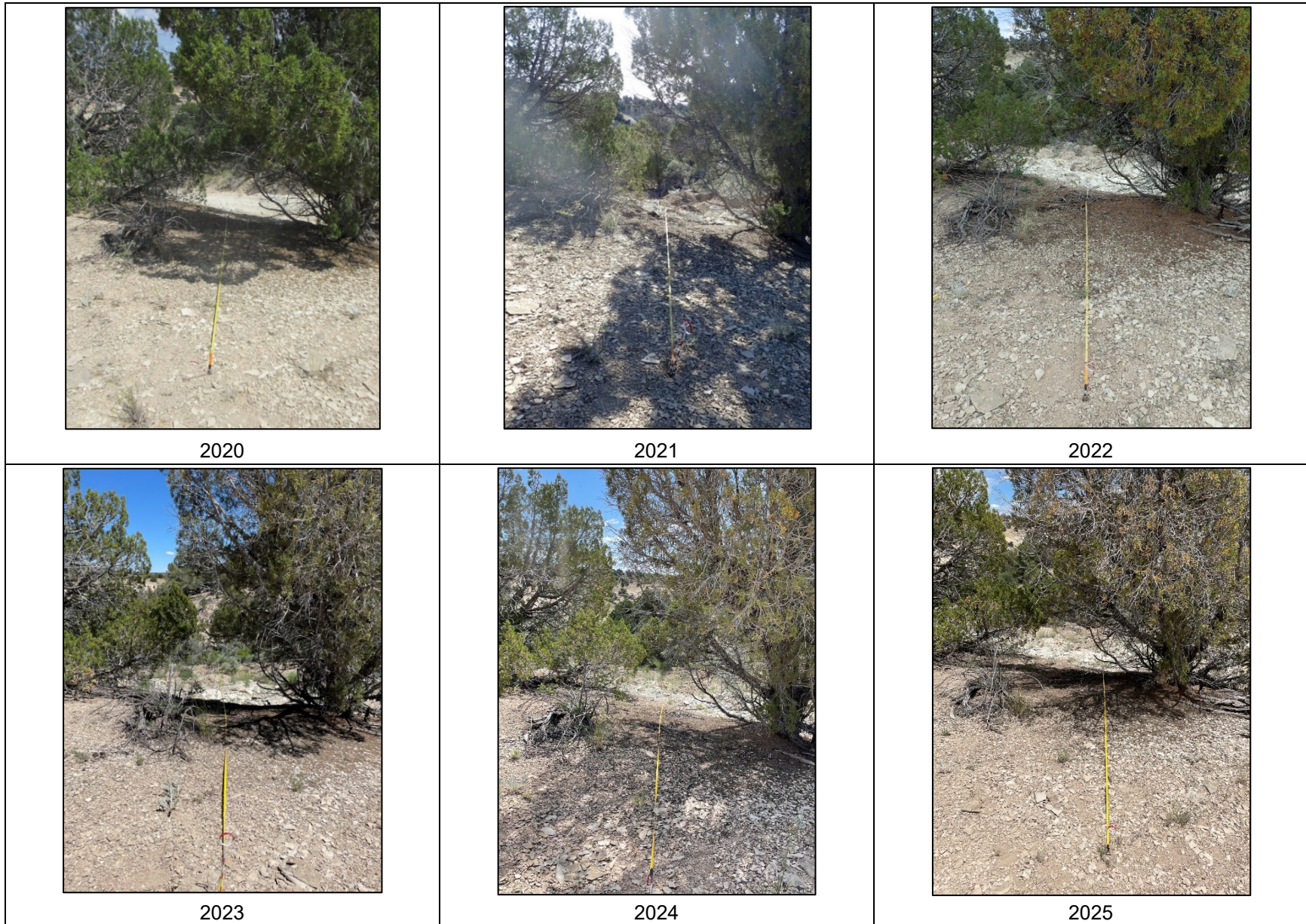


Figure 6. Monitoring Location 5, Bronco, Colorado, Site

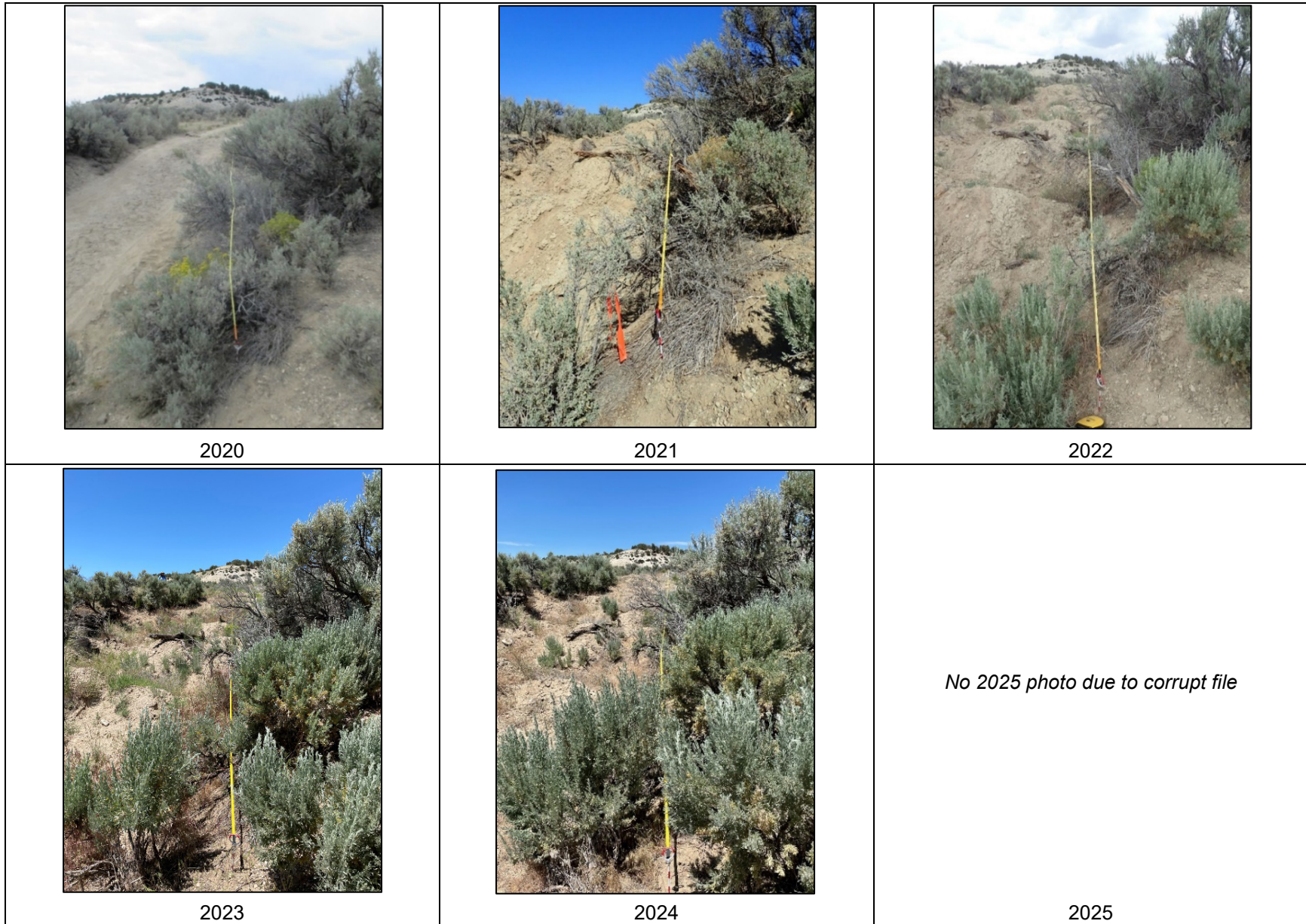


Figure 7. Monitoring Location 6, Bronco, Colorado, Site



Figure 8. Monitoring Location 7, Bronco, Colorado, Site

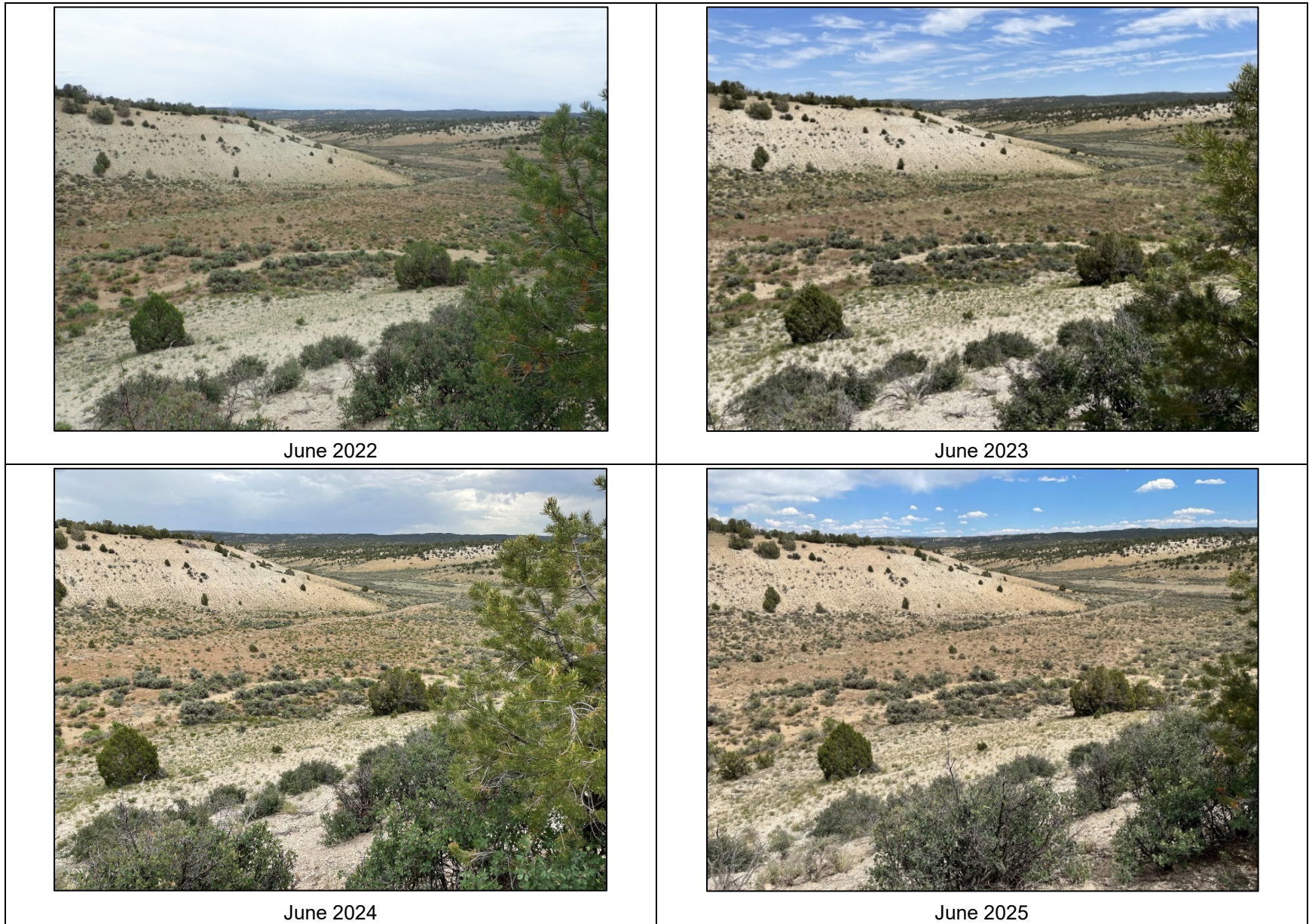


Figure 9. Overview of Reclaimed Road, Bronco, Colorado, Site

Appendix A
Comprehensive Data

Table A-1. DPC Data (Predisturbance Monitoring Conducted August 19, 2020)

					Monitoring Locations						
					1	2	3	4	5	6	AVG
Scientific Name	Common Name	Growth Form	Origin	Desirable?	Relative Cover (%)						
<i>Achnatherum hymenoides</i>	Indian ricegrass	Grass	Native	D	3	3	0	10	0	4	3
<i>Agropyron cristatum</i>	Crested wheatgrass	Grass	Introduced	N	34	22	11	0	12	0	13
<i>Alyssum desertorum</i>	Desert madwort	Forb	Introduced	U	obs	obs	obs	0	0	0	<1
<i>Antennaria dimorpha</i>	Low pussytoes	Forb	Native	D	0	0	obs	0	0	0	<1
<i>Artemisia frigida</i>	Prairie sagewort	Shrub	Native	D	obs	0	obs	0	obs	0	<1
<i>Artemisia tridentata</i>	Wyoming big sagebrush	Shrub	Native	D	44	41	obs	19	9	39	25
<i>Astragalus bisulcatus</i>	Twogrooved milkvetch	Forb	Native	D	obs	obs	obs	obs	0	0	<1
<i>Bromus tectorum</i>	Cheatgrass	Grass	Introduced	U	0	0	0	0	0	25	4
<i>Castilleja linariifolia</i>	Wyoming Indian paintbrush	Forb	Native	D	0	0	0	obs	0	0	<1
<i>Cirsium barnebyi</i>	Barneby's thistle	Forb	Native	D	0	0	0	0	3	0	1
<i>Elymus elymoides</i>	Squirreltail	Grass	Native	D	obs	0	0	13	6	4	4
<i>Elymus trachycaulus</i>	Slender wheatgrass	Grass	Native	D	0	0	obs	3	3	obs	1
<i>Ericameria nauseosa</i>	Rubber rabbitbrush	Shrub	Native	D	9	13	obs	26	3	4	9
<i>Eriogonum ovalifolium</i>	Cushion buckwheat	Forb	Native	D	0	0	0	obs	obs	0	<1
<i>Erodium cicutarium</i>	Redstem stork's bill	Forb	Introduced	U	obs	obs	obs	0	0	0	<1
<i>Grindelia squarrosa</i>	Curlycup gumweed	Forb	Native	N	0	0	obs	0	12	11	4
<i>Gutierrezia sarothrae</i>	Broom snakeweed	Shrub	Native	N	6	16	22	3	0	0	8
<i>Hesperostipa comata</i>	Needle and thread	Grass	Native	D	obs	3	0	0	0	0	1
<i>Heterotheca villosa</i>	Hairy false goldenaster	Forb	Forb	D	0	0	obs	3	0	0	1
<i>Hymenopappus filifolius</i>	Fineleaf hymenopappus	Forb	Native	D	obs	obs	33	obs	0	0	6
<i>Juniperus osteosperma</i>	Utah juniper	Shrub	Native	D	obs	0	obs	obs	33	0	6
<i>Koeleria macrantha</i>	Prairie Junegrass	Grass	Native	D	0	0	0	obs	0	0	<1
<i>Krascheninnikovia lanata</i>	Winterfat	Shrub	Native	D	0	0	0	0	0	obs	<1
<i>Lupinus sp.</i>	Lupine	Forb	Native	D	0	0	obs	6	0	0	1
<i>Machaeranthera canescens</i>	Hoary tansyaster	Forb	Native	D	0	0	0	0	9	0	2
<i>Pascopyrum smithii</i>	Western wheatgrass	Grass	Native	D	0	0	0	0	0	11	2
<i>Penstemon pachyphyllus</i>	Thickleaf beardtongue	Forb	Native	D	obs	obs	obs	0	0	0	<1
<i>Physaria acutifolia</i>	Sharpleaf twinpod	Forb	Native	D	0	obs	obs	0	3	0	1
<i>Phlox andicola</i>	Prairie phlox	Forb	Native	D	obs	obs	11	0	obs	0	2
<i>Phlox hoodii</i>	Spiny phlox	Forb	Native	D	0	0	obs	obs	obs	0	<1
<i>Pinus edulis</i>	Twoneedle pinyon	Shrub	Native	D	0	0	obs	obs	0	0	<1
<i>Poa secunda</i>	Sandberg bluegrass	Grass	Native	D	3	0	obs	16	0	0	3
<i>Polygonum aviculare</i>	Prostrate knotweed	Forb	Introduced	U	0	obs	11	obs	0	0	2

Table A-1. DPC Data (Predisturbance Monitoring Conducted August 19, 2020) (continued)

					Monitoring Locations						
					1	2	3	4	5	6	AVG
Scientific Name	Common Name	Growth Form	Origin	Desirable?	Relative Cover (%)						
<i>Pseudoroegneria spicata</i>	Bluebunch wheatgrass	Grass	Native	D	0	0	0	obs	obs	0	<1
<i>Purshia tridentata</i>	Antelope bitterbrush	Shrub	Native	D	obs	3	obs	0	6	0	2
<i>Rhus trilobata</i>	Skunkbush sumac	Shrub	Native	D	0	0	0	0	obs	0	<1
<i>Salsola tragus</i>	Prickly Russian thistle	Forb	Introduced	U	0	0	0	0	0	obs	<1
<i>Sphaeralcea coccinea</i>	Scarlet globemallow	Forb	Native	D	0	0	0	0	0	4	1
<i>Verbascum thapsus</i>	Common mullein	Forb	Introduced	U	0	0	11	0	0	0	2
Desirable species					59	63	44	97	76	64	67
Neutral species					41	38	33	3	24	11	25
Undesirable species					0	0	22	0	0	25	8
Grasses					41	28	11	42	21	43	31
Forbs					0	0	67	10	27	14	20
Shrubs					59	72	22	48	52	43	49
					Absolute Cover (%)						
Total foliar cover					46	48	20	40	46	38	40
Bare ground					22	26	50	24	20	44	31
Basal					0	0	0	2	0	0	0
Rock					6	6	20	24	24	6	14
Lichen					4	0	0	0	0	0	1
Standing dead					2	0	0	2	0	2	1
Plant litter					20	20	10	10	10	10	13
Slope (%)					1	1	3	3	20	15	7
Herbaceous height (cm)					23	20	13	27	18	16	20
Woody height (cm)					33	34	11	64	170	49	60
Azimuth					352	34	354	116	84	290	NA

Abbreviations:

- AVG = average
- cm = centimeters
- D = desirable
- N = neutral
- NA = not applicable
- obs = observed
- U = undesirable

Table A-2. Revegetation Success Monitoring Conducted April 18–19, 2021

					Monitoring Locations							
					1	2	3	4	5	6	7	AVG
Scientific Name	Common Name	Growth Form	Origin	Desirable?	Relative Cover (%)							
<i>Achnatherum hymenoides</i>	Indian ricegrass	Grass	Native	D	0	0	0	10	0	0	0	1
<i>Agropyron cristatum</i>	Crested wheatgrass	Grass	Introduced	N	50	0	100	10	0	0	0	23
<i>Alyssum desertorum</i>	Desert madwort	Forb	Introduced	U	0	0	0	0	0	0	0	*
<i>Amelanchier utahensis</i>	Utah serviceberry	Shrub	Native	D	0	0	0	0	6	0	0	1
<i>Artemisia frigida</i>	Prairie sagewort	Shrub	Native	D	obs	0	obs	0	obs	0	0	<1
<i>Artemisia tridentata</i>	Wyoming big sagebrush	Shrub	Native	D	0	0	0	20	0	100	0	17
<i>Astragalus bisulcatus</i>	Twogrooved milkvetch	Forb	Native	D	obs	obs	obs	obs	0	0	0	<1
<i>Bassia scoparia</i>	Burningbush	Forb	Introduced	U	0	0	0	0	0	0	22	3
<i>Bromus tectorum</i>	Cheatgrass	Grass	Introduced	U	0	0	0	0	0	0	22	3
<i>Castilleja linariifolia</i>	Wyoming Indian paintbrush	Forb	Native	D	0	0	0	obs	0	0	0	<2
<i>Ceratocephala testiculata</i>	Curveseed butterwort	Forb	Introduced	U	0	0	0	0	0	0	33	5
<i>Cirsium barnebyi</i>	Barneby's thistle	Forb	Native	D	0	0	0	0	0	0	0	*
<i>Elymus elymoides</i>	Squirreltail	Grass	Native	D	obs	0	0	obs	obs	obs	0	<1
<i>Ericameria nauseosa</i>	Rubber rabbitbrush	Shrub	Native	D	0	0	0	10	0	0	0	1
<i>Eriogonum ovalifolium</i>	Cushion buckwheat	Forb	Native	D	0	0	0	0	0	0	0	*
<i>Grindelia squarrosa</i>	Curlycup gumweed	Forb	Native	N	0	0	0	0	obs	0	0	<1
<i>Gutierrezia sarothrae</i>	Broom snakeweed	Shrub	Native	N	0	0	0	10	19	0	0	4
<i>Hesperostipa comata</i>	Needle and thread	Grass	Native	D	obs	0	0	0	0	0	0	<1
<i>Heterotheca villosa</i>	Hairy false goldenaster	Forb	Forb	D	0	0	obs	0	0	0	0	<1
<i>Hymenopappus filifolius</i>	Fineleaf hymenopappus	Forb	Native	D	0	0	obs	0	0	0	0	<1
<i>Juniperus osteosperma</i>	Utah juniper	Shrub	Native	D	obs	obs	0	obs	69	0	0	10
<i>Koeleria macrantha</i>	Prairie Junegrass	Grass	Native	D	0	0	0	obs	0	0	0	<1
<i>Krascheninnikovia lanata</i>	Winterfat	Shrub	Native	D	0	0	0	0	0	obs	obs	<1
<i>Lupinus sp.</i>	Lupine	Forb	Native	D	0	0	0	10	0	0	0	1
<i>Machaeranthera canescens</i>	Hoary tansyaster	Forb	Native	D	0	0	0	0	0	0	0	*
<i>Pascopyrum smithii</i>	Western wheatgrass	Grass	Native	D	50	100	0	10	6	0	22	27
<i>Physaria acutifolia</i>	Sharpleaf twinpod	Forb	Native	D	0	obs	obs	0	0	0	0	<1
<i>Phlox andicola</i>	Prairie phlox	Forb	Native	D	obs	obs	obs	0	obs	0	0	<1
<i>Phlox hoodii</i>	Spiny phlox	Forb	Native	D	0	0	obs	0	obs	0	0	<1
<i>Pinus edulis</i>	Twoneedle pinyon	Shrub	Native	D	0	0	obs	obs	0	0	0	<1
<i>Poa secunda</i>	Sandberg bluegrass	Grass	Native	D	obs	0	obs	20	0	0	0	3
<i>Polygonum aviculare</i>	Prostrate knotweed	Forb	Introduced	U	0	0	0	0	0	0	0	*
<i>Pseudoroegneria spicata</i>	Bluebunch wheatgrass	Grass	Native	D	0	0	0	obs	obs	0	0	<1

Table A-2. Revegetation Success Monitoring Conducted April 18–19, 2021 (continued)

					Monitoring Locations							
					1	2	3	4	5	6	7	AVG
Scientific Name	Common Name	Growth Form	Origin	Desirable?	Relative Cover (%)							
<i>Purshia tridentata</i>	Antelope bitterbrush	Shrub	Native	D	obs	0	obs	0	obs	0	0	<1
<i>Rhus trilobata</i>	Skunkbush sumac	Shrub	Native	D	0	0	0	0	obs	0	0	<1
<i>Salsola tragus</i>	Prickly Russian thistle	Forb	Introduced	U	0	0	0	0	0	obs	obs	<1
<i>Sphaeralcea coccinea</i>	Scarlet globemallow	Forb	Native	D	0	0	0	0	0	obs	obs	<1
<i>Verbascum thapsus</i>	Common mullein	Forb	Introduced	U	0	0	obs	0	0	0	0	<1
Desirable species					50	100	0	80	81	100	22	62
Neutral species					50	0	100	20	19	0	0	27
Undesirable species					0	0	0	0	0	0	78	11
Grasses					100	100	100	50	6	0	44	57
Forbs					0	0	0	10	0	0	56	9
Shrubs					0	0	0	40	94	100	0	33
					Absolute Cover (%)							
Total foliar cover					4	2	2	18	32	14	18	13
Bare ground					48	70	34	36	18	44	70	46
Basal					0	0	0	0	0	0	0	0
Rock					22	18	42	20	34	8	2	21
Lichen					0	0	0	0	0	0	0	0
Standing dead					0	0	0	2	0	0	0	0
Plant litter					26	10	22	24	16	34	10	20
Slope (%)					1	1	3	3	20	15	20	7
Herbaceous height (cm)					4	5	8	8	17	0	6	7
Woody height (cm)					0	0	0	75	162	99	6	49
Azimuth					352	34	354	116	84	290	220	NA

Note:

* Indicates species in previous years.

Abbreviations:

AVG = average
 cm = centimeters
 D = desirable
 N = neutral
 NA = not applicable
 obs = observed
 U = undesirable

Table A-3. Revegetation Success Monitoring Conducted June 29–30, 2022

					Monitoring Locations							
Scientific Name	Common Name	Growth Form	Origin	Desirable?	1	2	3	4	5	6	7	AVG
					Relative Cover (%)							
<i>Achnatherum hymenoides</i>	Indian ricegrass	Grass	Native	D	0	5	20	0	0	0	0	4
<i>Agropyron cristatum</i>	Crested wheatgrass	Grass	Introduced	N	8	0	20	0	0	0	0	4
<i>Alyssum desertorum</i>	Desert madwort	Forb	Introduced	U	23	14	20	4	0	11	11	12
<i>Amelanchier utahensis</i>	Utah serviceberry	Shrub	Native	D	0	0	0	0	obs	0	0	<1
<i>Antennaria dimorpha</i>	Low pussytoes	Forb	Native	D	0	0	obs	0	0	0	0	<1
<i>Artemisia cana</i>	Silver sagebrush	Shrub	Native	D	0	0	0	obs	0	0	0	<1
<i>Artemisia frigida</i>	Prairie sagewort	Shrub	Native	D	obs	0	obs	0	obs	0	0	<1
<i>Artemisia tridentata</i>	Wyoming big sagebrush	Shrub	Native	D	obs	obs	obs	0	25	11	0	5
<i>Astragalus bisulcatus</i>	Twogrooved milkvetch	Forb	Native	D	0	0	0	0	0	0	0	*
<i>Astragalus wingatanus</i>	Fort Wingate milkvetch	Forb	Native	D	0	0	0	9	0	0	0	1
<i>Bassia scoparia</i>	Burningbush	Forb	Introduced	U	0	0	0	0	0	0	0	*
<i>Bromus arvensis</i>	Field brome	Grass	Introduced	U	0	0	0	9	0	0	0	1
<i>Bromus tectorum</i>	Cheatgrass	Grass	Introduced	U	0	0	0	4	0	0	11	2
<i>Ceratocephala testiculata</i>	Curveseed butterwort	Forb	Introduced	U	0	0	0	0	0	0	0	*
<i>Chrysothamnus viscidiflorus</i>	Yellow rabbitbrush	Shrub	Native	D	obs	obs	obs	0	obs	0	0	4
<i>Cirsium barnebyi</i>	Barneby's thistle	Forb	Native	D	0	0	0	0	0	0	0	*
<i>Cryptantha flavoculata</i>	Roughseed cryptantha	Forb	Native	D	8	10	40	0	0	0	0	8
<i>Descurainia sophia</i>	Herb sophia	Forb	Introduced	U	8	0	0	4	0	11	0	3
<i>Elymus elymoides</i>	Squirreltail	Grass	Native	D	obs	0	0	obs	obs	obs	0	<1
<i>Ericameria nauseosa</i>	Rubber rabbitbrush	Shrub	Native	D	0	0	0	9	0	0	0	1
<i>Eriogonum ovalifolium</i>	Cushion buckwheat	Forb	Native	D	0	0	0	0	0	0	0	*
<i>Grindelia squarrosa</i>	Curlycup gumweed	Forb	Native	N	0	0	0	0	0	0	0	*
<i>Gutierrezia sarothrae</i>	Broom snakeweed	Shrub	Native	N	0	0	0	0	25	0	0	4
<i>Hesperostipa comata</i>	Needle and thread	Grass	Native	D	0	10	0	4	4	0	0	2
<i>Heterotheca villosa</i>	Hairy false goldenaster	Forb	Forb	D	0	0	0	0	0	0	0	*
<i>Hymenopappus filifolius</i>	Fineleaf hymenopappus	Forb	Native	D	0	0	obs	0	0	0	0	<1
<i>Juniperus osteosperma</i>	Utah juniper	Shrub	Native	D	0	0	0	0	39	0	0	6
<i>Koeleria macrantha</i>	Prairie Junegrass	Grass	Native	D	0	0	0	9	0	0	0	1
<i>Krascheninnikovia lanata</i>	Winterfat	Shrub	Native	D	0	0	0	0	0	0	obs	<1
<i>Lactuca serriola</i>	Prickly lettuce	Forb	Introduced	N	0	0	0	4	0	33	0	5
<i>Linum lewisii</i>	Lewis flax	Forb	Native	D	23	0	0	4	0	0	0	4
<i>Lupinus sp.</i>	Lupine	Forb	Native	D	0	0	0	0	0	0	0	*
<i>Machaeranthera canescens</i>	Hoary tansyaster	Forb	Native	D	0	0	0	0	0	0	0	*

Table A-3. Revegetation Success Monitoring Conducted June 29–30, 2022 (continued)

					Monitoring Locations							
					1	2	3	4	5	6	7	AVG
Scientific Name	Common Name	Growth Form	Origin	Desirable?	Relative Cover (%)							
<i>Machaeranthera grindelioides</i>	Rayless tansyaster	Forb	Native	D	0	0	0	0	4	0	0	1
<i>Pascopyrum smithii</i>	Western wheatgrass	Grass	Native	D	8	14	0	4	0	0	11	5
<i>Physaria acutifolia</i>	Sharpleaf twinpod	Forb	Native	D	0	obs	obs	0	0	0	0	<1
<i>Phlox andicola</i>	Prairie phlox	Forb	Native	D	obs	obs	obs	0	obs	0	0	<1
<i>Phlox hoodii</i>	Spiny phlox	Forb	Native	D	0	0	obs	0	obs	0	0	<1
<i>Poa secunda</i>	Sandberg bluegrass	Grass	Native	D	0	0	0	9	0	0	0	1
<i>Pseudoroegneria spicata</i>	Bluebunch wheatgrass	Grass	Native	D	8	10	0	17	0	0	0	5
<i>Purshia tridentata</i>	Antelope bitterbrush	Shrub	Native	D	obs	0	obs	0	obs	0	0	<1
<i>Salsola tragus</i>	Prickly Russian thistle	Forb	Introduced	U	15	38	0	0	0	33	61	21
<i>Sphaeralcea coccinea</i>	Scarlet globemallow	Forb	Native	D	0	0	0	0	0	obs	6	1
<i>Thinopyrum intermedium</i>	Intermediate wheatgrass	Grass	Introduced	D	0	0	0	9	4	0	0	2
<i>Verbascum thapsus</i>	Common mullein	Forb	Introduced	U	obs	obs	obs	0	0	0	0	0
Desirable species					46	48	60	74	100	11	17	51
Neutral species					8	0	20	4	0	33	0	9
Undesirable species					46	52	20	22	0	56	83	40
Grasses					23	38	40	65	7	0	22	28
Forbs					77	62	60	26	4	89	78	56
Shrubs					0	0	0	9	89	11	0	16
					Absolute Cover (%)							
Total foliar cover					24	40	12	44	48	18	32	31
Bare ground					30	34	16	18	20	60	40	31
Basal					0	0	0	0	0	0	0	0
Rock					30	18	48	20	22	10	0	21
Lichen					0	0	0	0	0	0	0	0
Standing dead					0	0	0	2	4	0	0	1
Plant litter					16	8	24	16	6	12	28	16
Slope (%)					1	1	3	3	20	15	20	7
Herbaceous height (cm)					26	27	22	8	27	29	16	23
Woody height (cm)					0	0	0	40	222	91	15	59
Azimuth (degrees)					352	34	354	116	84	290	220	NA

Note:

* Indicates species in previous years.

Abbreviations:

AVG = average, cm = centimeters, D = desirable, N = neutral, NA = not applicable, obs = observed, U = undesirable

Table A-4. Revegetation Success Monitoring Conducted June 27–28, 2023

					Monitoring Location							
					1	2	3	4	5	6	7	AVG
Scientific Name	Common Name	Growth Form	Origin	Desirable?	Relative Cover (%)							
<i>Achnatherum hymenoides</i>	Indian ricegrass	Grass	Native	D	0	6	17	0	0	9	0	4
<i>Agropyron cristatum</i>	Crested wheatgrass	Grass	Introduced	N	11	9	0	0	0	0	0	3
<i>Alyssum desertorum</i>	Desert madwort	Forb	Introduced	U	14	0	0	0	0	7	12	5
<i>Amelanchier utahensis</i>	Utah serviceberry	Shrub	Native	D	0	0	0	0	4	0	0	1
<i>Antennaria dimorpha</i>	Low pussytoes	Forb	Native	D	0	0	obs	0	0	0	0	<1
<i>Artemisia frigida</i>	Prairie sagewort	Shrub	Native	D	obs	0	obs	0	obs	0	0	<1
<i>Artemisia tridentata</i>	Wyoming big sagebrush	Shrub	Native	D	0	0	0	5	7	0	0	2
<i>Astragalus bisulcatus</i>	Twogrooved milkvetch	Forb	Native	D	0	0	0	0	0	0	0	*
<i>Astragalus wingatanus</i>	Fort Wingate milkvetch	Forb	Native	D	0	0	0	14	4	0	0	2
<i>Bassia scoparia</i>	Burningbush	Forb	Introduced	U	0	0	0	0	0	0	obs	<1
<i>Bromus arvensis</i>	Field brome	Grass	Introduced	U	0	0	0	5	0	0	0	1
<i>Bromus tectorum</i>	Cheatgrass	Grass	Introduced	U	11	3	0	0	0	24	24	9
<i>Ceratocephala testiculata</i>	Curveseed butterwort	Forb	Introduced	U	0	0	0	0	0	0	2	<1
<i>Chorispora tenella</i>	Purple mustard	Forb	Introduced	U	3	0	0	0	4	0	0	1
<i>Chrysothamnus viscidiflorus</i>	Yellow rabbitbrush	Shrub	Native	D	0	3	0	0	19	2	0	3
<i>Cirsium barnebyi</i>	Barneby's thistle	Forb	Native	D	0	0	0	0	0	0	0	*
<i>Cryptantha flavoculata</i>	Roughseed cryptantha	Forb	Native	D	0	0	17	0	0	0	0	2
<i>Delphinium sp.</i>	Larkspur	Forb	Native	D	0	0	0	5	0	0	0	1
<i>Descurainia pinnata</i>	Western tansymustard	Forb	Native	D	0	0	0	0	4	0	0	1
<i>Descurainia sophia</i>	Herb sophia	Forb	Introduced	U	0	0	0	0	0	0	0	*
<i>Elymus elymoides</i>	Squirreltail	Grass	Native	D	0	0	0	5	7	0	0	2
<i>Ericameria nauseosa</i>	Rubber rabbitbrush	Shrub	Native	D	0	0	0	5	4	0	0	1
<i>Eriogonum ovalifolium</i>	Cushion buckwheat	Forb	Native	D	0	0	0	0	0	0	0	*
<i>Grindelia squarrosa</i>	Curlycup gumweed	Forb	Native	N	0	0	0	0	obs	0	0	<1
<i>Gutierrezia sarothrae</i>	Broom snakeweed	Shrub	Native	N	0	0	0	0	obs	0	0	<1
<i>Hesperostipa comata</i>	Needle and thread	Grass	Native	D	3	9	17	23	0	0	0	7
<i>Heterotheca villosa</i>	Hairy false goldenaster	Forb	Forb	D	0	0	0	0	0	0	0	*
<i>Hymenopappus filifolius</i>	Fineleaf hymenopappus	Forb	Native	D	0	0	0	obs	0	0	0	<1
<i>Ipomopsis congesta</i>	Ballhead ipomopsis	Forb	Native	D	0	0	0	0	0	2	0	<1
<i>Juniperus osteosperma</i>	Utah juniper	Shrub	Native	D	0	0	0	0	33	0	0	5
<i>Koeleria macrantha</i>	Prairie Junegrass	Grass	Native	D	0	0	0	5	0	0	0	1
<i>Krascheninnikovia lanata</i>	Winterfat	Shrub	Native	D	0	0	0	0	0	0	2	<1
<i>Lactuca serriola</i>	Prickly lettuce	Forb	Introduced	N	0	0	0	0	0	0	0	*

Table A-4. Revegetation Success Monitoring Conducted June 27–28, 2023 (continued)

					Monitoring Location							
					1	2	3	4	5	6	7	AVG
Scientific Name	Common Name	Growth Form	Origin	Desirable?	Relative Cover (%)							
<i>Lappula occidentalis</i>	Flatspine stickseed	Forb	Native	D	0	6	0	9	0	13	21	7
<i>Linum lewisii</i>	Lewis flax	Forb	Native	D	37	20	50	18	11	7	2	21
<i>Lupinus</i> sp.	Lupine	Forb	Native	D	0	0	0	0	0	0	0	*
<i>Machaeranthera canescens</i>	Hoary tansyaster	Forb	Native	D	0	0	0	0	0	0	0	*
<i>Machaeranthera grindelioides</i>	Rayless tansyaster	Forb	Native	D	0	0	0	0	0	0	0	*
<i>Pascopyrum smithii</i>	Western wheatgrass	Grass	Native	D	14	11	0	0	0	0	14	6
<i>Physaria acutifolia</i>	Sharpleaf twinpod	Forb	Native	D	0	obs	obs	0	0	0	0	<1
<i>Phlox andicola</i>	Prairie phlox	Forb	Native	D	obs	obs	obs	0	obs	0	0	<1
<i>Phlox hoodii</i>	Spiny phlox	Forb	Native	D	0	0	obs	0	obs	0	0	<1
<i>Poa secunda</i>	Sandberg bluegrass	Grass	Native	D	0	0	0	0	obs	0	0	<1
<i>Pseudoroegneria spicata</i>	Bluebunch wheatgrass	Grass	Native	D	6	9	0	9	4	0	5	5
<i>Purshia tridentata</i>	Antelope bitterbrush	Shrub	Native	D	obs	0	obs	0	obs	0	0	<1
<i>Salsola tragus</i>	Prickly Russian thistle	Forb	Introduced	U	0	26	0	0	0	37	14	11
<i>Sisymbrium altissimum</i>	Tall tumbled mustard	Forb	Introduced	U	0	0	0	0	0	0	2	<1
<i>Sphaeralcea coccinea</i>	Scarlet globemallow	Forb	Native	D	0	0	0	0	0	obs	obs	<1
<i>Verbascum thapsus</i>	Common mullein	Forb	Introduced	U	obs	obs	obs	0	0	0	0	<1
Desirable species					60	63	100	91	96	33	45	70
Neutral species					14	9	0	0	4	0	0	4
Undesirable species					26	29	0	5	0	67	50	25
Grasses					46	46	33	45	11	33	43	37
Forbs					51	51	67	41	19	65	50	49
Shrubs					0	3	0	9	63	2	0	11
					Absolute Cover (%)							
Total foliar cover					60	52	10	38	48	62	62	47
Bare ground					8	20	38	20	6	16	16	18
Basal					0	0	0	0	2	0	2	1
Rock					14	10	34	18	32	4	0	16
Lichen					0	0	0	0	0	0	0	0
Standing dead					0	0	0	4	2	4	0	1
Plant litter					18	18	18	20	10	14	20	17
Slope (%)					1	1	3	3	20	15	20	7
Herbaceous height (cm)					56	57	34	64	42	50	53	51

Table A-4. Revegetation Success Monitoring Conducted June 27–28, 2023 (continued)

					Monitoring Location							
					1	2	3	4	5	6	7	AVG
Scientific Name	Common Name	Growth Form	Origin	Desirable?	Relative Cover (%)							
					Absolute Cover (%) (continued)							
Woody height (cm)					39	0	21	47	190	58	34	56
Azimuth (degrees)					352	10	354	116	84	290	220	NA

Note:

* Indicates species in previous years.

Abbreviations:

AVG = average
 cm = centimeters
 D = desirable
 N = neutral
 NA = not applicable
 obs = observed
 U = undesirable

Table A-5. Revegetation Success Monitoring Conducted June 19–20, 2024

					Monitoring Location							
					1	2	3	4	5	6	7	AVG
Scientific Name	Common Name	Growth Form	Origin	Desirable?	Relative Cover (%)							
<i>Achnatherum hymenoides</i>	Indian ricegrass	Grass	Native	D	8	9	0	0	0	5	5	4
<i>Agropyron cristatum</i>	Crested wheatgrass	Grass	Introduced	N	8	5	0	0	3	0	0	2
<i>Alyssum desertorum</i>	Desert madwort	Forb	Introduced	U	0	0	8	0	0	5	5	3
<i>Amelanchier utahensis</i>	Utah serviceberry	Shrub	Native	D	0	0	0	0	obs	0	0	<1
<i>Antennaria dimorpha</i>	Low pussytoes	Forb	Native	D	0	0	0	0	0	0	0	*
<i>Artemisia frigida</i>	Prairie sagewort	Shrub	Native	D	0	0	obs	0	obs	0	0	<1
<i>Artemisia tridentata</i>	Wyoming big sagebrush	Shrub	Native	D	0	0	0	0	9	48	0	8
<i>Astragalus bisulcatus</i>	Twogrooved milkvetch	Forb	Native	D	0	0	0	0	0	obs	0	<1
<i>Astragalus wingatanus</i>	Fort Wingate milkvetch	Forb	Native	D	0	0	8	7	0	0	0	2
<i>Bassia scoparia</i>	Burningbush	Forb	Introduced	U	0	0	0	0	0	0	0	*
<i>Bromus arvensis</i>	Field brome	Grass	Introduced	U	0	0	0	0	0	0	0	*
<i>Bromus tectorum</i>	Cheatgrass	Grass	Introduced	U	4	5	0	0	0	5	32	6
<i>Ceratocephala testiculata</i>	Curveseed butterwort	Forb	Introduced	U	0	0	0	0	0	0	0	*
<i>Chaenactis douglasii</i>	Douglas' dustymaiden	Forb	Native	D	0	0	0	0	0	obs	0	<1
<i>Chorispura tenella</i>	Purple mustard	Forb	Introduced	U	3	0	0	0	0	0	0	*
<i>Chrysothamnus viscidiflorus</i>	Yellow rabbitbrush	Shrub	Native	D	4	14	23	0	3	10	obs	8
<i>Cirsium barnebyi</i>	Barneby's thistle	Forb	Native	D	0	0	0	0	obs	0	0	<1
<i>Cryptantha flavoculata</i>	Roughseed cryptantha	Forb	Native	D	0	0	8	0	3	0	0	2
<i>Delphinium sp.</i>	Larkspur	Forb	Native	D	0	0	0	7	0	0	0	1
<i>Descurainia pinnata</i>	Western tansymustard	Forb	Native	D	0	0	0	0	0	0	0	*
<i>Descurainia sophia</i>	Herb sophia	Forb	Introduced	U	0	0	0	0	0	0	0	*
<i>Elymus elymoides</i>	Squirreltail	Grass	Native	D	0	0	0	7	3	0	0	1
<i>Ericameria nauseosa</i>	Rubber rabbitbrush	Shrub	Native	D	0	0	0	7	9	0	0	2
<i>Eriogonum ovalifolium</i>	Cushion buckwheat	Forb	Native	D	0	0	0	obs	0	0	0	<1
<i>Grindelia squarrosa</i>	Curlycup gumweed	Forb	Native	N	0	0	0	0	0	0	0	*
<i>Gutierrezia sarothrae</i>	Broom snakeweed	Shrub	Native	N	0	0	0	0	0	0	0	*
<i>Hesperostipa comata</i>	Needle and thread	Grass	Native	D	4	9	0	7	3	0	0	3
<i>Heterotheca villosa</i>	Hairy false goldenaster	Forb	Forb	D	0	0	0	0	0	0	0	*
<i>Hymenopappus filifolius</i>	Fineleaf hymenopappus	Forb	Native	D	0	0	0	obs	0	0	0	<1
<i>Ipomopsis congesta</i>	Ballhead ipomopsis	Forb	Native	D	0	0	0	0	0	0	0	<1
<i>Juniperus osteosperma</i>	Utah juniper	Shrub	Native	D	0	0	0	0	36	0	0	5
<i>Koeleria macrantha</i>	Prairie Junegrass	Grass	Native	D	0	0	0	obs	0	0	0	<1
<i>Krascheninnikovia lanata</i>	Winterfat	Shrub	Native	D	0	0	0	0	3	0	5	1

Table A-5. Revegetation Success Monitoring Conducted June 19–20, 2024 (continued)

					Monitoring Location							
					1	2	3	4	5	6	7	AVG
Scientific Name	Common Name	Growth Form	Origin	Desirable?	Relative Cover (%)							
<i>Lactuca serriola</i>	Prickly lettuce	Forb	Introduced	N	0	0	0	0	0	0	0	*
<i>Lappula occidentalis</i>	Flatspine stickseed	Forb	Native	D	0	0	0	0	0	0	11	2
<i>Linum lewisii</i>	Lewis flax	Forb	Native	D	15	23	31	21	18	5	obs	16
<i>Lupinus</i> sp.	Lupine	Forb	Native	D	0	0	0	0	0	0	0	*
<i>Machaeranthera canescens</i>	Hoary tansyaster	Forb	Native	D	0	0	0	0	0	0	0	*
<i>Machaeranthera grindelioides</i>	Rayless tansyaster	Forb	Native	D	0	0	0	0	0	0	0	*
<i>Pascopyrum smithii</i>	Western wheatgrass	Grass	Native	D	38	23	0	0	3	5	26	14
<i>Phlox andicola</i>	Prairie phlox	Forb	Native	D	0	0	0	0	obs	0	0	<1
<i>Phlox hoodii</i>	Spiny phlox	Forb	Native	D	0	0	0	0	0	0	0	*
<i>Phlox longifolia</i>	Longleaf phlox	Forb	Native	D	0	0	0	*	0	0	obs	<1
<i>Physaria acutifolia</i>	Sharpleaf twinpod	Forb	Native	D	0	obs	obs	0	0	0	0	<1
<i>Poa secunda</i>	Sandberg bluegrass	Grass	Native	D	0	0	0	0	0	0	0	*
<i>Pseudoroegneria spicata</i>	Bluebunch wheatgrass	Grass	Native	D	19	14	15	43	3	0	11	15
<i>Purshia tridentata</i>	Antelope bitterbrush	Shrub	Native	D	0	0	obs	0	obs	0	0	<1
<i>Rhus trilobata</i>	Skunkbush sumac	Shrub	Native	D	0	0	0	0	3	0	0	<1
<i>Salsola tragus</i>	Prickly Russian thistle	Forb	Introduced	U	0	0	0	0	0	14	0	2
<i>Sphaeralcea coccinea</i>	Scarlet globemallow	Forb	Native	D	0	0	0	0	0	5	5	1
<i>Tetradymia canescens</i>	Spineless horsebrush	Shrub	Native	D	0	0	8	0	0	0	0	1
<i>Verbascum thapsus</i>	Common mullein	Forb	Introduced	U	0	0	0	0	0	0	0	*
Desirable species					88	91	92	100	97	76	63	87
Neutral species					8	5	0	0	3	0	0	2
Undesirable species					4	5	8	0	0	24	37	11
Grasses					81	64	15	57	15	14	74	46
Forbs					15	23	54	36	21	29	21	28
Shrubs					4	14	31	7	64	57	5	26
					Absolute Cover (%)							
Total foliar cover					44	34	24	28	58	40	32	37
Bare ground					12	18	26	22	10	16	20	18
Basal					0	2	0	0	2	0	0	1
Rock					6	4	36	26	20	4	0	14
Lichen					0	0	0	0	0	0	0	0
Standing dead					2	2	0	8	2	14	0	4
Plant litter					36	42	14	16	10	26	48	27

Table A-5. Revegetation Success Monitoring Conducted June 19–20, 2024 (continued)

					Monitoring Location							
					1	2	3	4	5	6	7	AVG
Scientific Name	Common Name	Growth Form	Origin	Desirable?	Relative Cover (%)							
					Absolute Cover (%) (continued)							
Slope (%)					1	1	3	3	20	15	20	7
Herbaceous height (cm)					41	38	33	32	36	24	21	32
Woody height (cm)					32	20	19	47	175	50	22	52
Azimuth (degrees)					352	10	354	116	84	290	220	NA

Note:

* Indicates species in previous years.

Abbreviations:

- AVG = average
- cm = centimeters
- D = desirable
- N = neutral
- NA = not applicable
- obs = observed
- U = undesirable

Table A-6. Revegetation Success Monitoring Conducted June 16–17, 2025

					Monitoring Location							
					1	2	3	4	5	6	7	AVG
Scientific Name	Common Name	Growth Form	Origin	Desirable?	Relative Cover (%)							
<i>Achnatherum hymenoides</i>	Indian ricegrass	Grass	Native	D	0	12	0	5	4	0	0	3
<i>Agropyron cristatum</i>	Crested wheatgrass	Grass	Introduced	N	14	0	0	0	0	0	0	2
<i>Alyssum desertorum</i>	Desert madwort	Forb	Introduced	U	0	0	0	0	4	5	29	5
<i>Amelanchier utahensis</i>	Utah serviceberry	Shrub	Native	D	0	0	0	0	obs	0	0	<1
<i>Antennaria dimorpha</i>	Low pussytoes	Forb	Native	D	0	0	0	0	0	0	0	*
<i>Artemisia frigida</i>	Prairie sagewort	Shrub	Native	D	0	0	0	5	0	0	0	1
<i>Artemisia tridentata</i>	Wyoming big sagebrush	Shrub	Native	D	5	4	0	0	19	50	0	11
<i>Astragalus bisulcatus</i>	Twogrooved milkvetch	Forb	Native	D	0	4	0	0	0	0	0	1
<i>Astragalus wingatanus</i>	Fort Wingate milkvetch	Forb	Native	D	0	0	obs	0	0	0	0	<1
<i>Bassia scoparia</i>	Burningbush	Forb	Introduced	U	0	0	0	0	0	0	0	*
<i>Bromus arvensis</i>	Field brome	Grass	Introduced	U	0	0	0	0	0	0	0	*
<i>Bromus tectorum</i>	Cheatgrass	Grass	Introduced	U	0	4	0	0	4	30	12	7
<i>Ceratocephala testiculata</i>	Curveseed butterwort	Forb	Introduced	U	0	0	0	0	0	0	0	*
<i>Chaenactis douglasii</i>	Douglas' dustymaiden	Forb	Native	D	0	0	0	0	0	obs	0	<1
<i>Chorispora tenella</i>	Crossflower	Forb	Introduced	U	3	0	0	0	0	0	0	*
<i>Chrysothamnus viscidiflorus</i>	Yellow rabbitbrush	Shrub	Native	D	0	4	9	0	15	0	0	4
<i>Cirsium barnebyi</i>	Barneby's thistle	Forb	Native	D	0	0	0	0	obs	0	0	<1
<i>Cryptantha flavoculata</i>	Roughseed cryptantha	Forb	Native	D	0	0	obs	0	0	0	0	<1
<i>Delphinium sp.</i>	Larkspur	Forb	Native	D	0	0	0	7	0	0	0	1
<i>Descurainia pinnata</i>	Western tansymustard	Forb	Native	D	0	0	0	0	0	0	0	*
<i>Descurainia sophia</i>	Herb sophia	Forb	Introduced	U	0	0	0	0	0	0	0	*
<i>Elymus elymoides</i>	Squirreltail	Grass	Native	D	0	0	9	5	0	0	0	2
<i>Ericameria nauseosa</i>	Rubber rabbitbrush	Shrub	Native	D	9	0	0	18	0	0	0	4
<i>Eriogonum alatum</i>	Winged buckwheat	Forb	Native	D	0	0	0	0	obs	0	0	<1
<i>Eriogonum microthecum</i>	Slender buckwheat	Forb	Native	D	0	0	0	obs	0	0	0	<1
<i>Eriogonum ovalifolium</i>	Cushion buckwheat	Forb	Native	D	0	0	0	obs	0	0	0	<1
<i>Grindelia squarrosa</i>	Curlycup gumweed	Forb	Native	N	0	0	0	0	0	0	obs	<1
<i>Gutierrezia sarothrae</i>	Broom snakeweed	Shrub	Native	N	0	0	0	0	0	0	obs	<1
<i>Hesperostipa comata</i>	Needle and thread	Grass	Native	D	5	4	0	5	8	0	0	3
<i>Heterotheca villosa</i>	Hairy false goldenaster	Forb	Forb	D	0	0	0	0	0	0	obs	<1
<i>Hymenopappus filifolius</i>	Fineleaf hymenopappus	Forb	Native	D	0	0	0	obs	obs	0	0	<1
<i>Ipomopsis congesta</i>	Ballhead ipomopsis	Forb	Native	D	0	0	0	0	0	0	0	<1
<i>Juniperus osteosperma</i>	Utah juniper	Shrub	Native	D	0	0	0	0	31	0	0	4

Table A-6. Revegetation Success Monitoring Conducted June 16–17, 2025 (continued)

					Monitoring Location							
					1	2	3	4	5	6	7	AVG
Scientific Name	Common Name	Growth Form	Origin	Desirable?	Relative Cover (%)							
<i>Koeleria macrantha</i>	Prairie Junegrass	Grass	Native	D	0	0	0	5	0	0	0	1
<i>Krascheninnikovia lanata</i>	Winterfat	Shrub	Native	D	0	0	0	0	0	obs	obs	<1
<i>Lactuca serriola</i>	Prickly lettuce	Forb	Introduced	N	0	0	0	0	0	0	0	*
<i>Lappula occidentalis</i>	Flatspine stickseed	Forb	Native	D	0	0	0	0	0	5	0	1
<i>Linum lewisii</i>	Lewis flax	Forb	Native	D	23	31	18	14	4	0	0	13
<i>Lupinus</i> sp.	Lupine	Forb	Native	D	0	0	0	14	0	0	0	2
<i>Machaeranthera canescens</i>	Hoary tansyaster	Forb	Native	D	0	0	0	0	0	0	obs	<1
<i>Machaeranthera grindelioides</i>	Rayless tansyaster	Forb	Native	D	0	0	9	5	0	0	0	2
<i>Melilotus officinalis</i>	Sweetclover	Forb	Introduced	N	0	0	0	0	0	obs	0	<1
<i>Pascopyrum smithii</i>	Western wheatgrass	Grass	Native	D	18	27	0	0	0	0	41	12
<i>Phlox andicola</i>	Prairie phlox	Forb	Native	D	0	0	0	obs	0	0	0	<1
<i>Phlox hoodii</i>	Spiny phlox	Forb	Native	D	0	0	0	obs	obs	0	0	<1
<i>Phlox longifolia</i>	Longleaf phlox	Forb	Native	D	0	0	0	0	0	0	obs	<1
<i>Physaria acutifolia</i>	Sharpleaf twinpod	Forb	Native	D	0	0	0	obs	obs	obs	0	<1
<i>Poa secunda</i>	Sandberg bluegrass	Grass	Native	D	0	0	0	obs	obs	0	obs	<1
<i>Pseudoroegneria spicata</i>	Bluebunch wheatgrass	Grass	Native	D	27	12	45	32	4	0	0	17
<i>Purshia tridentata</i>	Antelope bitterbrush	Shrub	Native	D	0	0	9	0	obs	0	0	1
<i>Rhus trilobata</i>	Skunkbush sumac	Shrub	Native	D	0	0	0	0	4	0	0	1
<i>Salsola tragus</i>	Prickly Russian thistle	Forb	Introduced	U	0	0	0	0	0	10	12	3
<i>Sphaeralcea coccinea</i>	Scarlet globemallow	Forb	Native	D	0	0	0	0	4	0	6	1
<i>Tetradymia canescens</i>	Spineless horsebrush	Shrub	Native	D	0	0	obs	0	0	0	0	<1
<i>Verbascum thapsus</i>	Common mullein	Forb	Introduced	U	0	0	obs	0	0	obs	0	<1
Desirable species					86	96	100	100	92	55	47	82
Neutral species					14	0	0	0	0	0	0	2
Undesirable species					0	4	0	0	8	45	53	16
Grasses					64	58	55	41	19	30	53	46
Forbs					23	35	27	32	12	20	47	28
Shrubs					14	8	18	23	69	50	0	26
					Absolute Cover (%)							
Total foliar cover					44	54	22	44	52	44	34	42
Bare ground					22	16	24	30	12	20	36	23
Basal					0	0	0	0	0	0	0	0
Rock					12	6	38	14	14	4	0	13

Table A-6. Revegetation Success Monitoring Conducted June 16–17, 2025 (continued)

					Monitoring Location							
					1	2	3	4	5	6	7	AVG
Scientific Name	Common Name	Growth Form	Origin	Desirable?	Relative Cover (%)							
					Absolute Cover (%) (continued)							
				Lichen	0	0	0	0	0	0	0	0
				Standing dead	0	0	2	0	0	0	0	0
				Plant litter	22	24	14	12	22	32	30	22
				Slope (%)	0-1	0-1	0-1	0-1	0-1	0-1	0-1	0-1
				Herbaceous height (cm)	41	38	33	32	36	24	21	32
				Woody height (cm)	32	20	19	47	175	50	22	52
				Azimuth	352	10	354	116	84	290	220	204

Note:

* Indicates species in previous years.

Abbreviations:

AVG = average
 cm = centimeters
 D = desirable
 N = neutral
 obs = observed
 U = undesirable