

ARGONNE NATIONAL LABORATORY

DATE July 19, 1949

TO J. T. Rose and L. D. Marinelli DEPARTMENT

FROM G. C. Payne and J. E. Pingel DEPARTMENT

SUBJECT Final Survey of 39th Street Warehouse

A survey for contamination of the 39th Street Warehouse including soil surface sheds and loading platforms in the rear yard was completed July 7, 1949. Contaminated areas found in the building, the yard, and on equipment remaining in the building, are indicated on the accompanying map. Contaminated articles found and removed from the building by Reclamation Service and portable counter readings of the contaminant are as follows:

Table Top, 2-15M; 3/1^{MS}.

Four 10-gal. cans being used in the basement for ashes, 2-30M; 10/1^{MS}.
(One marked "Return to Site B")

One Trash Can, 10M; 1/1^{MS}.

Piece of paper (from container of H₂O Solution) 16/1^{MS}.

Instruments used were portable alpha counters, portable alpha floor counter, and portable GM counters. Surveying was done by J. Mitchell, G. C. Payne, and J. E. Pingel.

George C. Payne
G. C. Payne
Health Physics

J. E. Pingel
Health Physics

John E. Pingel

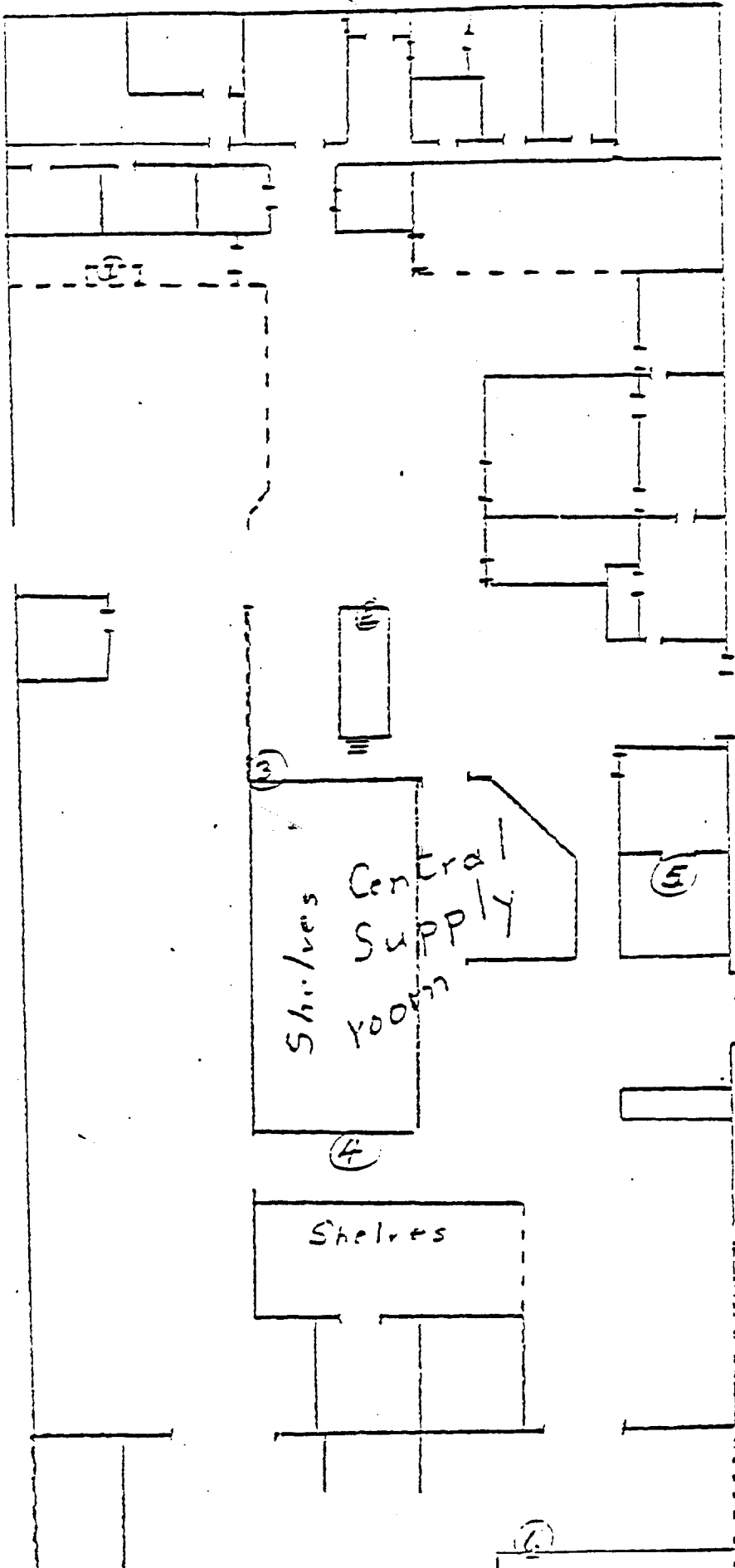
GCP:em

Enc.

cc: Reading File

← 39th St. West →

(39th St. Warehouse
July 14, 1949



Contaminated areas.

1. Bench Shelf - 3M; 2/1" S
2. Leading Platform -- 1/1" S
3. Floor -- 4/1" S
4. Cart -- 1/1" S
5. Door --- 3M
6. 20/1" S; 3M on ground

After Decontamination

1. Background (0.2A)
2. " (0.1/1" S)
3. 20.5/1" S
4. 20.5/1" S
5. Bkgrnd
6. < 1/1" S