



LTSM012614

126361

PROJECT SUMMARY**SITE CHARACTERIZATION AND REMEDIAL ACTION
AT THE
FORMER BLISS AND LAUGHLIN STEEL COMPANY SITE**

PROPOSED ACTIONS: Planned activities consist of site characterization in late February 1995 and future remedial action, if necessary, in July 1995. Planned activities at the site to further define the nature and extent of contamination prior to remediation will involve the collection of samples to assist in the characterization of potential waste material, and performance of a radiological survey to verify previous characterization results. A survey of the accessible overheads around the special finishing area will be conducted. A less intensive survey will be performed throughout the remainder of the building, with emphasis on adjacent areas, high traffic areas, and likely areas of contamination, such as areas which have had the floor re-finished or at slab joints. This will consist of collecting core samples by drilling through the concrete slab in re-finished areas and slab joints. Dust samples will be collected from the overheads and the material in floor trenches. Remedial activities may consist of decontamination of interior building surfaces and potential removal of soil beneath the concrete floors.

LOCATION: The former Bliss and Laughlin Steel Company site is located at 110 Hopkins Street in Buffalo, New York and is presently owned by Niagara Cold Drawn Corporation (NCDC).

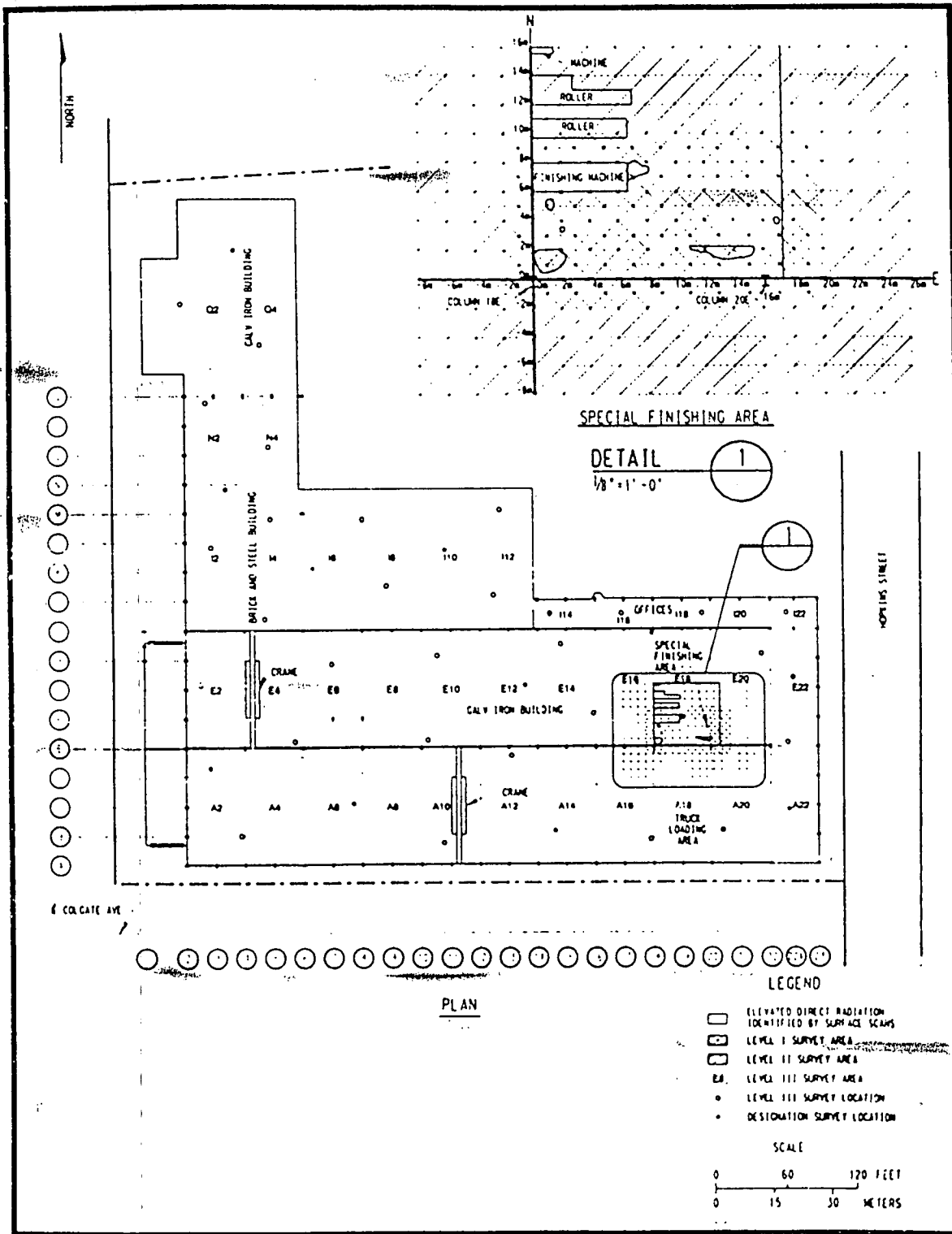
DISCUSSION: In the fall of 1952, the Bliss and Laughlin Steel Company performed machining and straightening operations on uranium rods. The finished rods were shipped to the Fernald Site in Ohio; turnings were returned by the Atomic Energy Commission (AEC) to Lake Ontario Ordinance Works (LOOW) for packaging and ultimate disposal or recycling.

The former Bliss and Laughlin site consists of a single large building with a floor area of about 12,000 cubic meters. There have been only minor changes to the structure since the 1950's. The floor is concrete and contains several shallow trenches. Floor surfaces are generally rough, pitted, and covered with a thin layer of oil absorbent material, dried oil, and grease. Machining equipment and material storage racks prevent access to some floor surface area. Ceilings are approximately 12 meters high and supported by a framework of trusses. The machining area of the building is open (i.e. without inside walls or partitions).

DETERMINATION: DOE has determined that the proposed action would have no effect on any archaeological sites or relics or historic properties included or eligible for inclusion in the National Register of Historic Places. DOE requests your concurrence in this determination.

RECORD COPY

LBL521.00 1



Bliss and Laughlin Steel
Floor Plan and Details

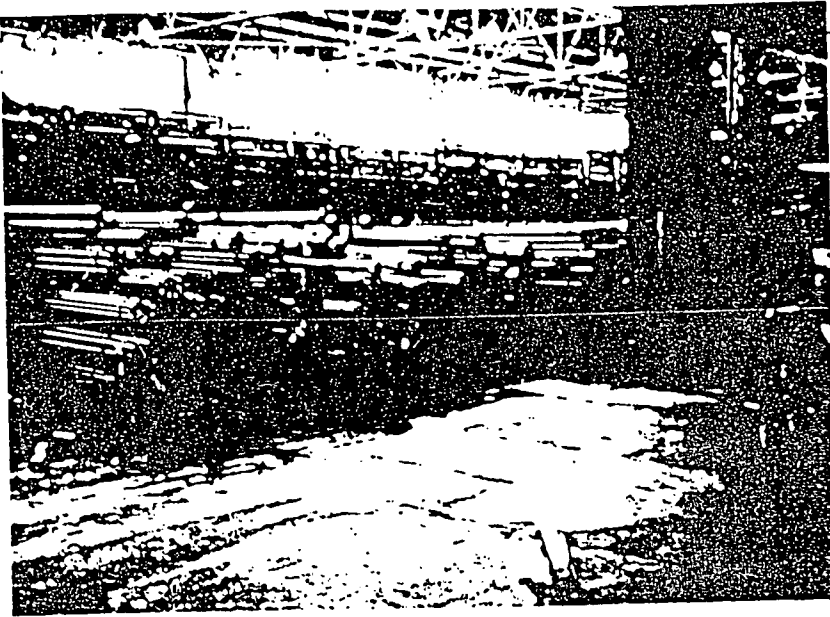
BEST AVAILABLE COPY



126361

The former Bliss and Laughlin Steel Company Site, 110 Hopkins Street, Buffalo, New York

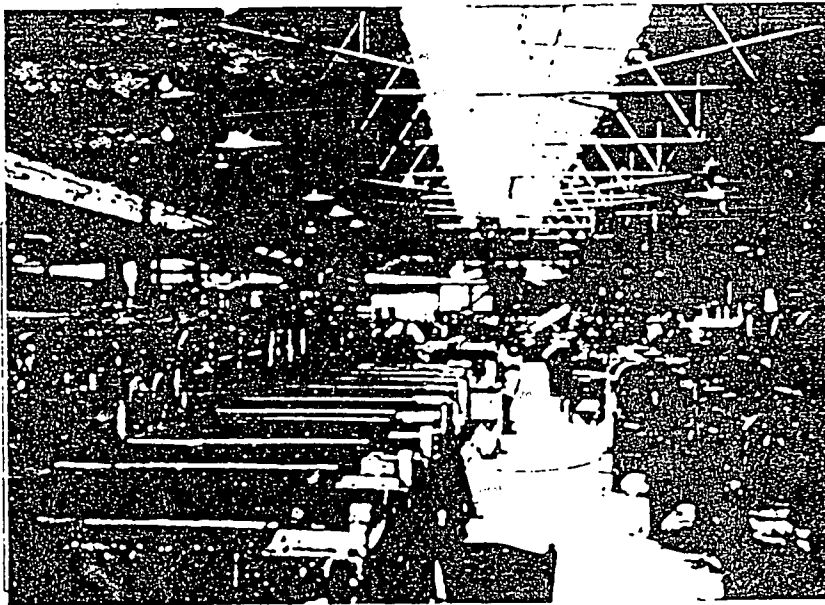
126361



128-01-11

8/23/94

General Area Looking Southwest From Grid F-4
Materials Storage



128-01-12

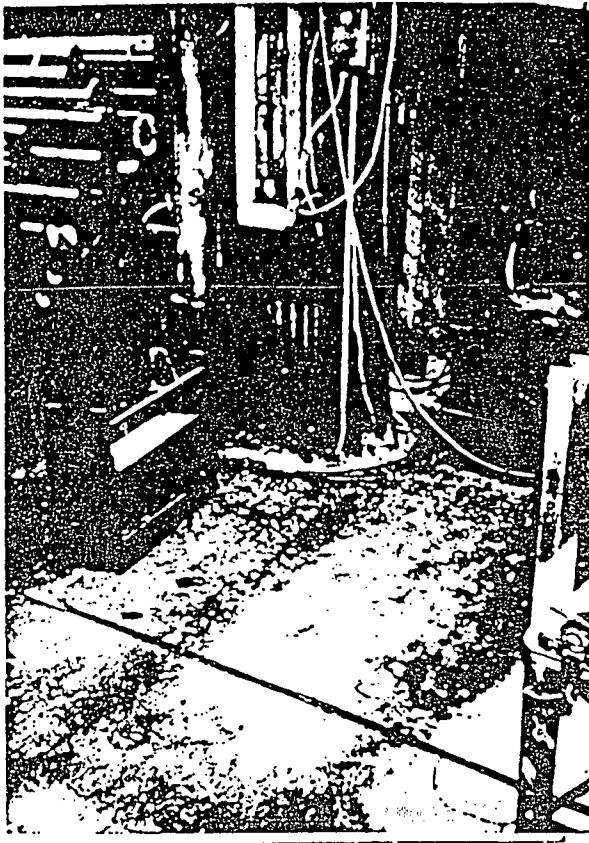
8/23/94

Lime Salt Bath, Facing West
Grid D-9

The former Bliss and Laughlin Steel Company Site,
110 Hopkins Street, Buffalo, New York

BEST AVAILABLE COPY

126361



128-01-09 8/23/94

Close Up of Floor
At Column A-0
Facing Southwest



128-1-10

8/23/94

Floor Shot of Area on South Side of Finishing Machine
Grid C-6

The former Bliss and Laughlin Steel Company Site,
110 Hopkins Street, Buffalo, New York

BEST AVAILABLE COPY

The former Bliss and Laughlin Steel Company Site,
110 Hopkins Street, Buffalo, New York

126361



128-01-07

8/23/94

Production Floor, Facing Northwest
Standing @ Grid H-4



128-01-08

8/23/94

Open 2" Pipe Buried in Floor
Facing East, North of
Column Betw. Grid I & J-0

BEST AVAILABLE COPY

126361

The former Bliss and Laughlin Steel
Company Site,
110 Hopkins Street, Buffalo, New York



128-01-05

8/23/94

Finishing Machine From
Column Line Between Grid I & J-12
Facing Southwest

128-01-06

8/23/94

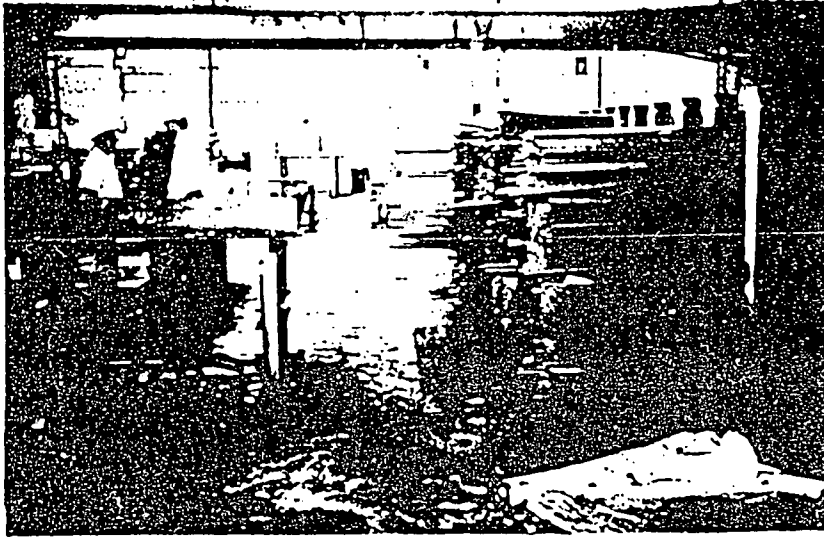
Covered Floor-Recesses
Standing @ North Wall
Facing South
Between F & G Grid



BEST AVAILABLE COPY

The former Bliss and Laughlin Steel Company Site,
110 Hopkins Street, Buffalo, New York

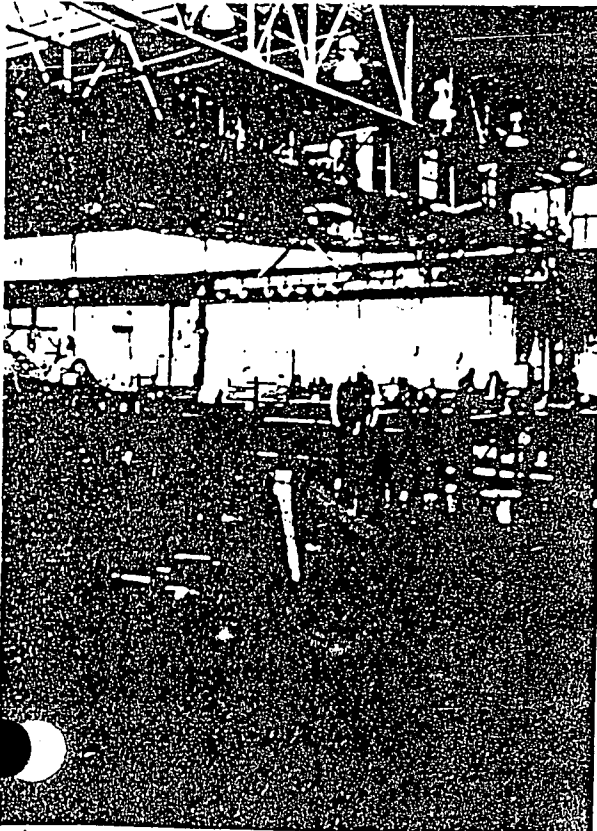
126361



128-01-03

8/23/94

Standing @ Grid H & I
Facing North, Approx. 80' to Wall



128-01-04

8/23/94

Standing @ Grid F-4
Facing Northwest
Approx. 16' to Bottom of Crane

BEST AVAILABLE COPY

The former Bliss and Laughlin Steel Company Site,
110 Hopkins Street, Buffalo, New York

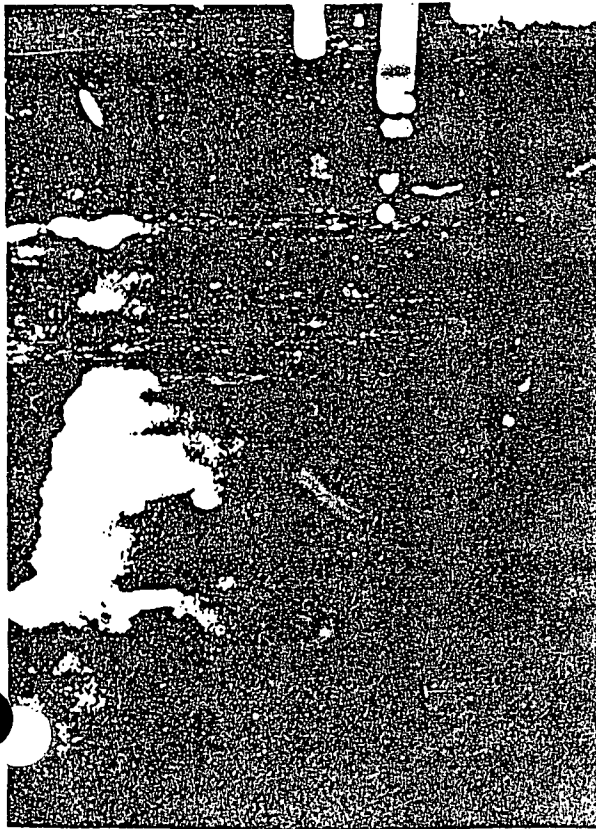
126361



128-01-01

8/23/94

Grid E-6, Facing Southwest from Column A-0



128-01-02

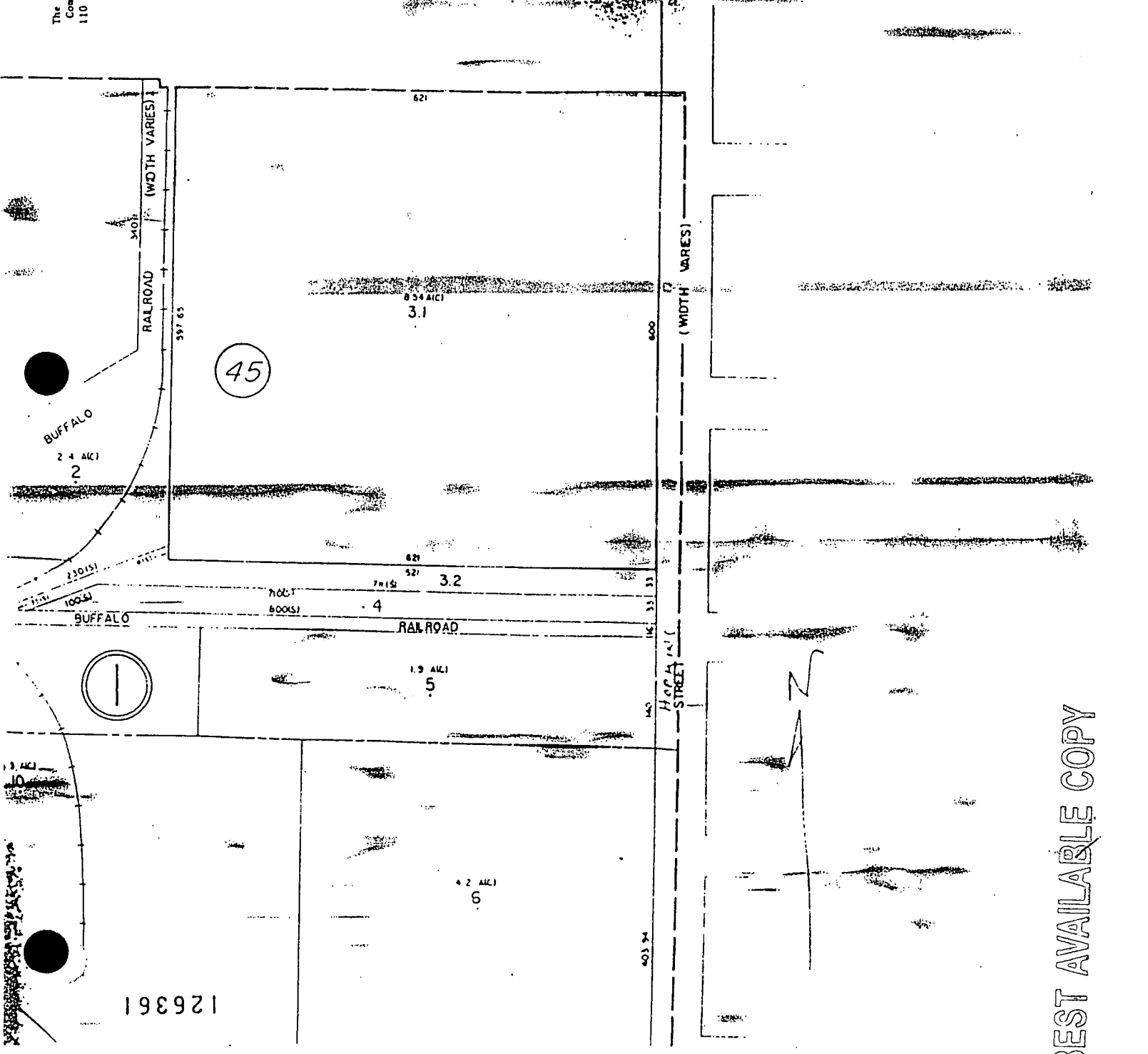
8/23/94

At Column Line I & J
Facing East

BEST AVAILABLE COPY

The Turner Bliss and Laughlin S.
Company Site,
110 Hopkins Street, Buffalo, New York

EXHIBIT "A"



126361

BEST AVAILABLE COPY