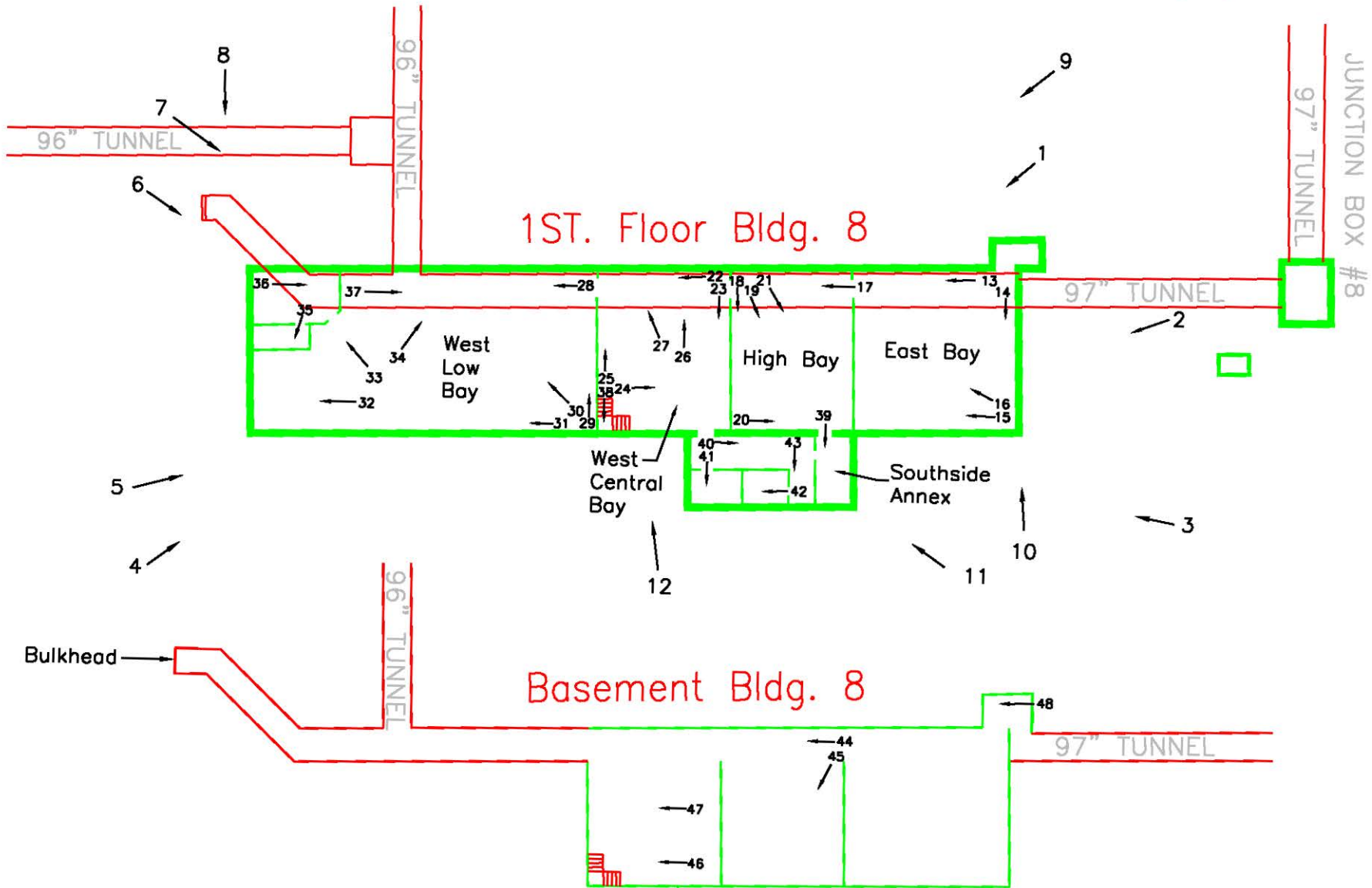


**Linde FUSRAP  
Bldg. 8 Photos  
October 3, 2007**

<b>Picture ID</b>	<b>Date</b>	<b>Facing</b>	<b>Description</b>
01	10/03/07	SW	Exterior Facade - North Side
02	10/03/07	SW	Exterior Facade - East Side
03	10/03/07	NW	Exterior Facade - South Side - East End
04	10/03/07	NE	Exterior Facade - South Side
05	10/03/07	NE	Exterior Facade - South Side - West End
06	10/03/07	SE	Exterior Facade - West Side & North Side - West End
07	10/03/07	SE	Exterior Facade - North Side
08	10/03/07	S	Exterior Facade - North Side - West End
09	10/03/07	SW	Exterior Facade - North Side - East End
10	10/03/07	N	Exterior Facade - South Side - East End
11	10/03/07	NW	Exterior Facade - South Side - Central Section
12	10/03/07	N	Exterior Facade - South Side - West End
13	10/03/07	W	Interior - East Bay
14	10/03/07	S	Interior - East Bay
15	10/03/07	W	Interior - East Bay
16	10/03/07	NW	Interior - East Bay
17	10/03/07	W	Inerior - High Bay
18	10/03/07	S	Inerior - High Bay
19	10/03/07	SE	Inerior - High Bay
20	10/03/07	E	Inerior - High Bay
21	10/03/07	SE	Inerior - High Bay - Looking up at Roof
22	10/03/07	W	Interior - West Central Bay
23	10/03/07	S	Interior - West Central Bay
24	10/03/07	E	Interior - West Central Bay
25	10/03/07	N	Interior - West Central Bay
26	10/03/07	N	Interior - West Central Bay
27	10/03/07	NW	Interior - West Central Bay - Gas and Electric Panel
28	10/03/07	W	Interior - West Low Bay
29	10/03/07	N	Interior - West Low Bay
30	10/03/07	NW	Interior - West Low Bay
31	10/03/07	W	Interior - West Low Bay
32	10/03/07	W	Interior - West Low Bay - Overhead Door
33	10/03/07	NW	Interior - West Low Bay - Offices at NW Corner
34	10/03/07	NE	Interior - West Low Bay
35	10/03/07	SW	Interior - West Low Bay - Offices at NW Corner
36	10/03/07	E	Interior - West Low Bay - Offices at NW Corner
37	10/03/07	E	Interior - West Low Bay
38	10/03/07	S	Interior - West Central Bay - Stairs to Basement
39	10/03/07	S	Interior - South Side Annex
40	10/03/07	E	Interior - South Side Annex
41	10/03/07	S	Interior - South Side Annex
42	10/03/07	W	Interior - South Side Annex
43	10/03/07	S	Interior - South Side Annex
44	10/03/07	W	Basement - Under High Bay
45	10/03/07	SW	Basement - Under High Bay
46	10/03/07	W	Basement - Under West Central Bay
47	10/03/07	W	Basement - Under West Central Bay
48	10/03/07	W	Stairwell to Basement from East Side Exterior

# Schematic Drawing—Building 8 Photograph Log

10/03/07















SPEED  
LIMIT  
10

STOP





SPEED  
LIMIT  
10



8

SPEED  
LIMIT  
10









STOP

8

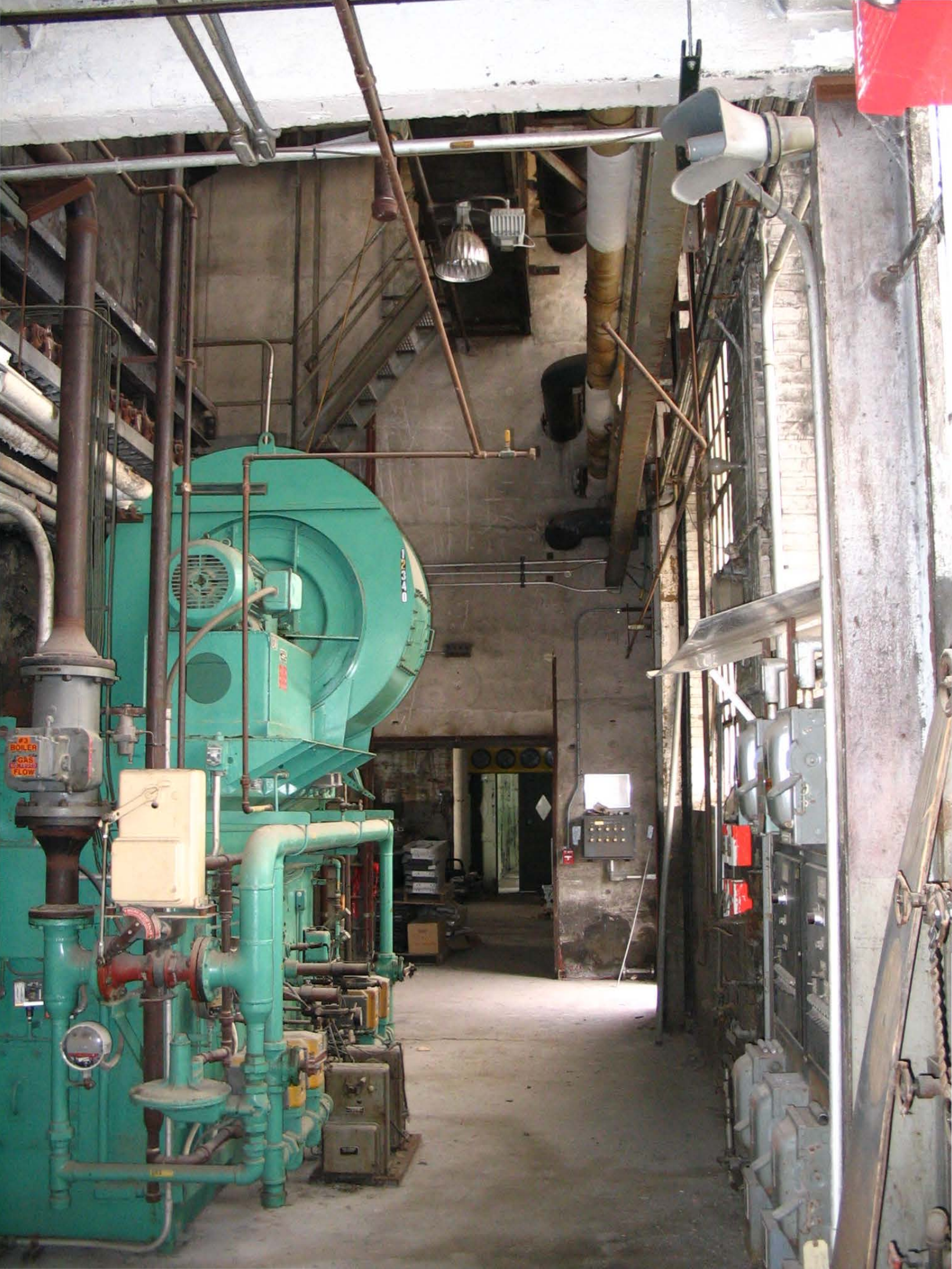














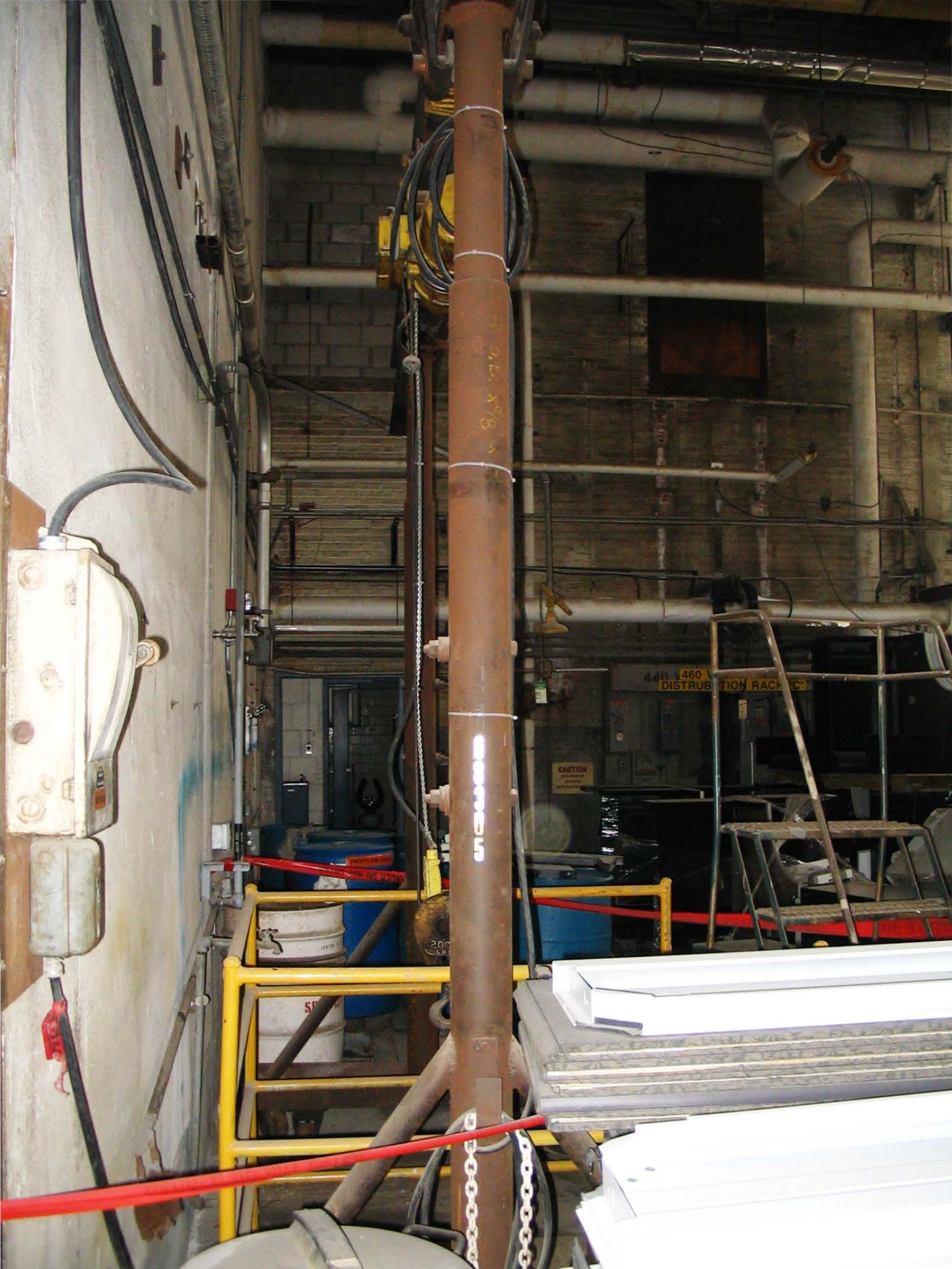












8" x 8" x 12'

BRONX

440 V 460 V DISTRIBUTION RACK

CAUTION



480 VOLT POWER PANEL C  
DISTRIBUTION RACK 'C'



460 VOLT POWER  
DISTRIBUTION RACK "B"



460 VOLT POWER  
DISTRIBUTION RACK "B"

6000 B  
GAS METER

NAT. GAS  
SUPPLY TO LAB













**ABELL-HOWE**

1/2  
TON

**DANGER**

DO NOT EXCEED RATED CAPACITY

IG





GENERAL SAFETY  
RULES - MUST BE  
DESCRIBED WHEN  
WORKING WITH  
CHEMICALS

WASH  
STATION

50-2318











TUNNEL ENTRY REQUIRES

- 1. LAMP
- 2. HEADLAMP
- 3. RESPIRATOR

CAUTION  
PROCEED  
CAUTIOUSLY  
GRAB  
HAND  
RAIL













WYPALL L10











