

2024 Long-Term Hydrologic Monitoring Program Report for the Rulison, Colorado, Site

February 2025

Approved for public release; further dissemination unlimited



U.S. DEPARTMENT OF
ENERGY

Legacy
Management

Available for sale to the public from:

U.S. Department of Commerce
National Technical Information Service
5301 Shawnee Road
Alexandria, VA 22312
Telephone: (800) 553-6847
Fax: (703) 605-6900
E-mail: orders@ntis.gov

Available electronically at <https://www.osti.gov/>

Available for a processing fee to U.S. Department of Energy and its contractors,
in paper, from:

U.S. Department of Energy
Office of Scientific and Technical Information
P.O. Box 62
Oak Ridge, TN 37831-0062
Phone: (865) 576-8401
Fax: (865) 576-5728
Email: reports@adonis.osti.gov

Reference herein to any specific commercial product, process, or service by trade name, trademark, manufacturer, or otherwise, does not necessarily constitute or imply its endorsement, recommendation, or favoring by the United States Government or any agency thereof or its contractors or subcontractors.

Contents

Abbreviations	ii
1.0 Introduction	1
2.0 Site Location and Background	1
2.1 Source of Contamination	4
2.2 Geologic Setting	4
2.2.1 Site Hydrology	5
2.3 Previous Monitoring Programs	6
3.0 Monitoring Program	7
3.1 Groundwater Monitoring and Surface Water Monitoring	7
3.2 Groundwater and Surface Water Sample Results	9
4.0 Conclusions	11
5.0 References	12

Figures

Figure 1. Site Location Map, Rulison Site	2
Figure 2. Schematic Cross Section of the Rulison Site Detonation Zone	3
Figure 3. Piceance Basin Cross Section (Modified from Yurewicz et al. [2003])	5
Figure 4. Shallow Groundwater and Surface Water Sample Location Map, Rulison Site	8
Figure 5. Comparison of Tritium in Shallow Wells near the Rulison Site with Tritium in Precipitation at Ottawa, Canada (Site with the Longest Historical Tritium Record [IAEA 2024])	10
Figure 6. Comparison of Tritium in Surface Water near the Rulison Site with Tritium in Precipitation at Ottawa, Canada (Site with the Longest Historical Tritium Record [IAEA 2024])	11

Table

Table 1. 2024 Groundwater and Surface Water Sample Results, Rulison Site	10
--	----

Abbreviations

bgs	below ground surface
CDPHE	Colorado Department of Public Health and Environment
DOE	U.S. Department of Energy
EPA	U.S. Environmental Protection Agency
ft	feet
GEMS	Geospatial Environmental Mapping System
LM	Office of Legacy Management
LTHMP	Long-Term Hydrologic Monitoring Program
pCi/L	picocuries per liter
R-E	emplacement well
R-En	reentry well
R-Ex	exploration well
SAP	Sampling and Analysis Plan
SGZ	surface ground zero

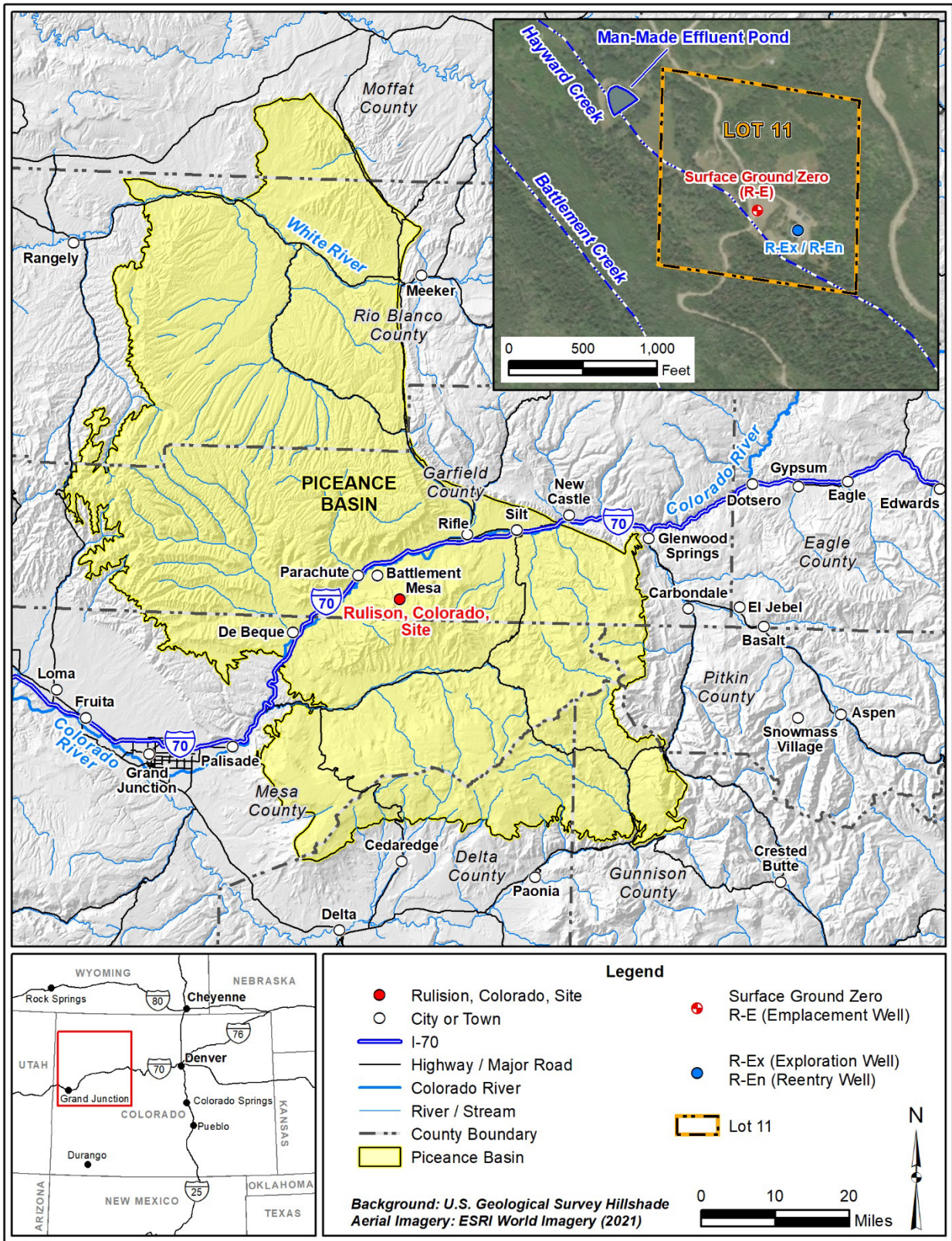
1.0 Introduction

This report presents the monitoring data collected by the U.S. Department of Energy (DOE) Office of Legacy Management (LM) during the 2024 sampling event at the Rulison, Colorado, Site. The Rulison site was the location of an underground nuclear test in 1969. The test resulted in residual radionuclide contamination at a detonation depth of 8425 feet (ft). Monitoring at the site has included the collection of samples from shallow groundwater wells, surface water locations, and natural gas-producing wells near the site to monitor for potential contamination that may be attributed to the nuclear test. This report summarizes the 2024 laboratory results of the samples collected from one surface water location and three shallow groundwater wells on and near the site. Results are compared with historical results obtained since monitoring began in 1972. Laboratory results of samples collected from natural gas wells are summarized in a separate report. This annual report and the natural gas well monitoring reports are available on the LM public website at <https://www.energy.gov/lm/rulison-colorado-site>. Data collected during this and previous monitoring events are available on the Geospatial Environmental Mapping System (GEMS) website at <https://gems.lm.doe.gov/#site=RUL>.

2.0 Site Location and Background

The Rulison site (also referred to as Lot 11) is in the Piceance Basin of western Colorado and is 40 miles northeast of Grand Junction, Colorado (Figure 1). The U.S. Atomic Energy Commission (a predecessor agency to DOE) conducted the underground nuclear test in partnership with the Austral Oil Company Inc. and the nuclear engineering firm CER Geonuclear Corporation, also called CER. The test was called Project Rulison, and it was designed to evaluate the use of a nuclear detonation to enhance natural gas production by fracturing low-permeability, gas-bearing sandstones of the Williams Fork Formation. Project Rulison was the second natural gas stimulation experiment in the Plowshare Program, which was a program to develop peaceful uses for nuclear energy.

The underground nuclear test was conducted in the emplacement well (R-E) at a depth of 8425 ft on September 10, 1969 (DOE 2015). The location of the former R-E well now signifies surface ground zero (SGZ) at the site. The nuclear detonation had a reported yield of 40 kilotons (DOE 2015) and produced extremely high temperatures that vaporized a volume of rock, creating a cavity surrounded by a fractured area extending outward from the detonation point (AEC 1973). Shortly after the detonation, the overlying fractured rock collapsed into the void space, creating a rubble-filled collapse chimney that extended above the detonation point. The former cavity, now the lower part of the collapse chimney, and the surrounding fractured rock are together referred to as the detonation zone. A reentry well (R-En) was drilled as a sidetrack hole off the exploration well (R-Ex) into the collapse chimney (Figure 2). Tests were conducted on the R-En well to evaluate the success of the detonation at improving gas production from the low-permeability sandstone reservoir (Reynolds 1972). Results of the gas well production testing are summarized in the *Modeling of Flow and Transport Induced by Gas Production Wells near the Project Rulison Site, Piceance Basin, Colorado* (DOE 2013).



046367

Figure 1. Site Location Map, Rulison Site

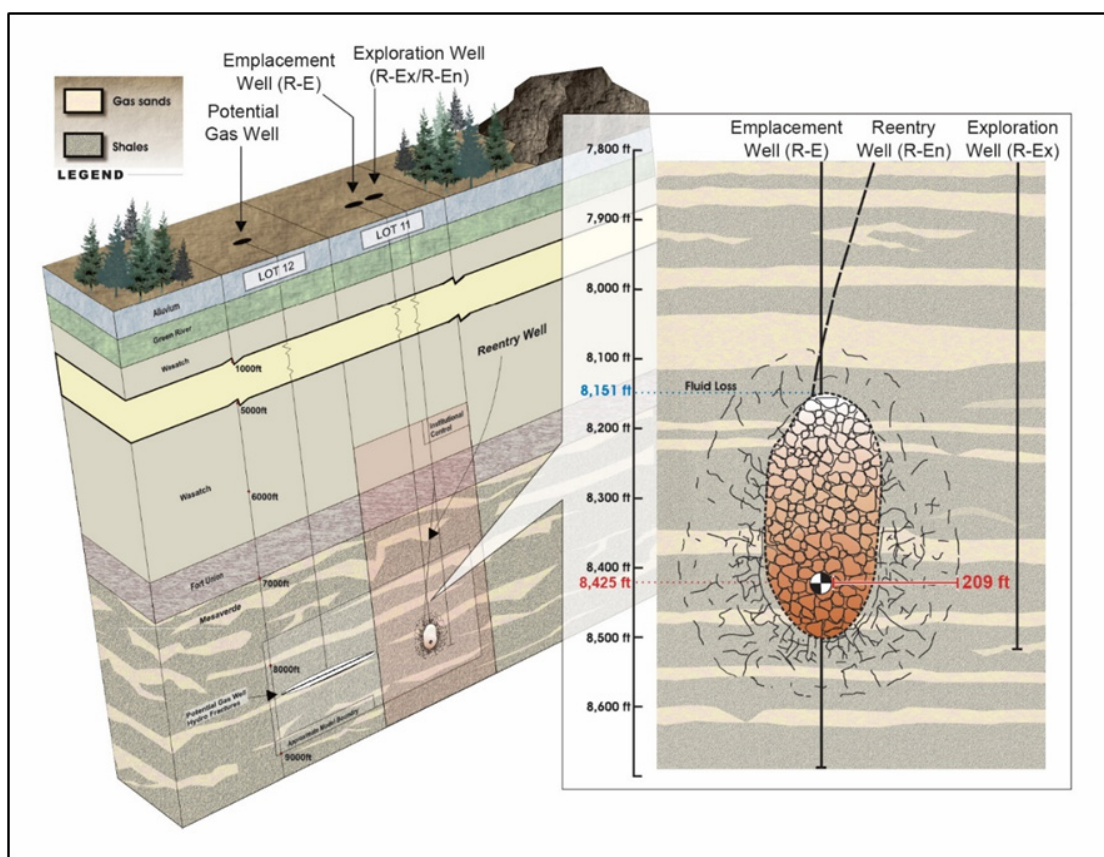


Figure 2. Schematic Cross Section of the Rulison Site Detonation Zone

Site decommissioning and cleanup activities were initiated in July 1972. These included collecting soil and vegetation samples to be analyzed for radiological contaminants, decontaminating equipment, and removing equipment and material not needed for future gas production activities (AEC 1973). The “final” decommissioning and cleanup occurred in 1976 after the participating parties agreed that future gas production would not occur at the site (ERDA 1977). As part of the final decommissioning and cleanup of the site, remaining equipment and material were removed, the mud pits adjacent to the R-Ex well (now referred to as the R-En well) were backfilled, tritium-contaminated soils were removed, and the radiological condition of the site was further characterized through extensive surficial soil sampling. Additionally, the R-E and R-En wells were abandoned, and a deed restriction was established for the site prohibiting the penetration or withdrawal of any material below 6000 ft within the 40 acres of Lot 11 unless authorized by the U.S. government (ERDA 1977). At the request of the landowner, the effluent pond used to store drilling fluids during the installation of the R-E well was left in place.

In 1994 and 1995, soil and sediment samples were collected from the former effluent pond and areas near the former R-E and R-En wells. Samples were analyzed for chemical and radiological contaminants to evaluate past cleanup operations (IT 1996). Corrective action consisted of draining the effluent pond and removing contaminated sediments that exceeded State of Colorado regulatory limits. Shallow groundwater monitoring wells were also installed near the effluent pond and monitored to verify that the remedial actions were effective. In 1998, DOE

provided Colorado regulators with a Surface Closure Report and recommended closure of the site surface with no further action (DOE 1998). The Colorado Department of Public Health and Environment (CDPHE) reviewed the report, agreed with the recommendation, and approved the surface closure activities (CDPHE 1998). The shallow monitoring wells were abandoned in 1999.

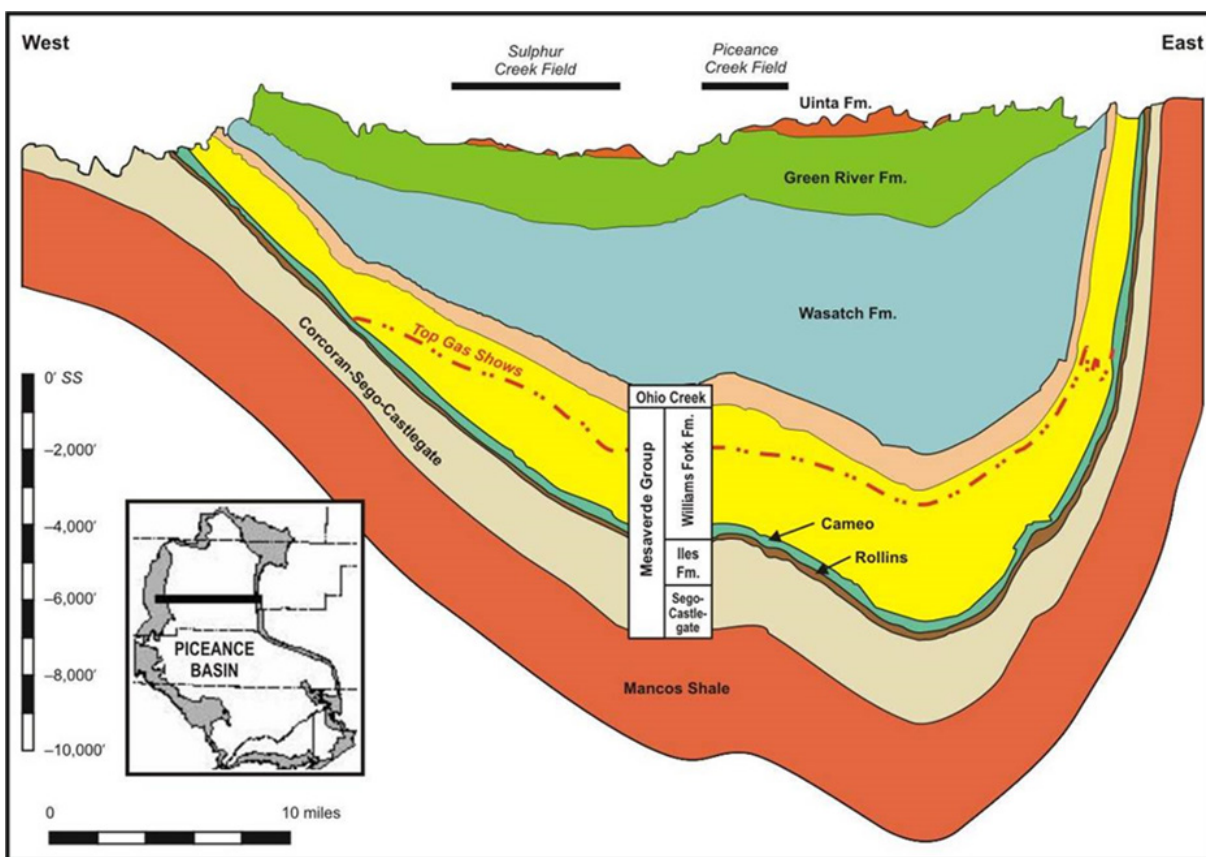
2.1 Source of Contamination

Surface and subsurface contamination resulted from the underground nuclear test at the Rulison site. The surface contamination was excavated and removed in 1996, and CDPHE approved closure of the surface with no further actions in 1998 (CDPHE 1998). Subsurface contamination remains in the detonation zone at a depth of 8425 ft near the R-E well, which includes the former cavity, collapse chimney, and fractured rock surrounding the former cavity. The detonation zone is contaminated by residual radioactive material, with high-melting-point radionuclides trapped in the solidified melt rock (often referred to as melt glass due to its glassy texture) at the bottom of the former cavity. The radionuclides incorporated in the melt rock can only be released to groundwater very slowly through dissolution of the melt rock (e.g., as described by Tompson et al. [1999] and Pawloski et al. [2001]). Furthermore, liquid movement is severely limited by the low permeability of the formation (only a few microdarcies) along with the presence of gas in pore spaces that further reduces the relative permeability of liquids. Therefore, although dissolution of radionuclides from melt rock could represent a long-term source of subsurface contamination, dissolved-phase transport of radionuclides away from the detonation zone would be insignificant because radionuclides in the solidified melt rock are essentially immobile.

The primary contaminants of concern are expected to be those radionuclides that can exist in the gas phase because the gas phase is much more mobile than the liquid phase in the gas-producing reservoirs of the Williams Fork Formation. Of the radionuclides that can exist in the gas phase, tritium and krypton-85 are expected to constitute most of the radioactivity (Smith 1971). Samples collected during production testing in 1970 and 1971 indicated that most of the krypton-85 was removed and flared but that a significant portion of the tritium produced by the detonation remained as tritiated liquid water (DOE 2013). Since tritium is the most abundant radionuclide remaining in the detonation zone that can be present in gas and aqueous phases, it is the radionuclide of concern at the Rulison site.

2.2 Geologic Setting

The Williams Fork Formation of the Mesaverde Group is the primary gas-producing zone within the Piceance Basin. The Piceance Basin is a northwest-southeast-oriented structure about 100 miles long and 40–50 miles wide (Figure 1). The bedding on the western flank of the basin dips gently to the east, and the bedding on the eastern flank of the basin dips steeply to the west, causing the basin to be asymmetrical and deepest along its eastern edge (Figure 3), where more than 20,000 ft of sedimentary rocks were deposited. The Williams Fork Formation is encountered between the depths of approximately 6500 and 9000 ft below ground surface (bgs) near the site and is overlain by the Ohio Creek Conglomerate and the Wasatch and Green River Formations. The Colorado River divides the Piceance Basin into northern and southern provinces. Figure 3 shows a cross section of the Piceance Basin.



Abbreviation: Fm = Formation

Figure 3. Piceance Basin Cross Section (Modified from Yurewicz et al. [2003])

The Williams Fork Formation is composed of low-permeability, discontinuous, interbedded fluviodeltaic sandstones and shales. These sandstones vary in clay content; the cleaner sandstones (less clay) in the lower two-thirds of the formation are the main targets for hydraulic fracturing and natural gas production. Sandstones in the upper one-third of the Williams Fork Formation are not production targets because of their higher water content, which lowers the relative permeability of the gas phase and causes water production to be excessive relative to the amount of gas that can be produced. Despite improvements in hydraulic fracturing technology, formation properties greatly inhibit fluid migration beyond the extent of the induced fractures. Wells near the Rulison site are being spaced on 10-acre centers, about 400 ft north and south and about 1320 ft east and west of adjacent wells. The east-west trend of natural fractures in the Williams Fork Formation near the Rulison site causes the hydraulic fractures and drainage patterns to be elongated in that direction (DOE 2013). A more detailed description of the hydraulic fracturing and drainage patterns at the Rulison site is provided in *Modeling of Flow and Transport Induced by Gas Production Wells near the Project Rulison Site, Piceance Basin, Colorado* (DOE 2013).

2.2.1 Site Hydrology

There are three surface water features near Lot 11. They include Battlement Creek; a smaller, spring-fed tributary of Battlement Creek (locally known as Hayward Creek); and a human-made effluent pond (Figure 1). Battlement Creek is a perennial stream that flows near the southwest

corner of the site and discharges into the Colorado River. The flow in Battlement Creek is regulated by Battlement Reservoir and is primarily fed by snowmelt, shallow groundwater, and springs. The smaller, spring-fed tributary of Battlement Creek known as Hayward Creek flows across the site east of Battlement Creek. The human-made pond covers a surface area of approximately 1 acre and is approximately 1300 ft northwest of the R-E well, which is also referred to as SGZ. During the surface restoration, at the request of the landowner, DOE constructed the pond from the drilling effluent pond. Battlement Creek and its tributaries generally flow in a northwesterly direction toward the Colorado River (USGS 1969).

Groundwater is encountered in the surficial deposits (shallow alluvium <200 ft thick) near the site, with the dominant source of recharge coming from the infiltration of precipitation, primarily snowmelt. Wells used by residents are completed in this shallow alluvial aquifer. The next potential groundwater source consists of intermittent sandy zones in the lower part of the underlying Green River Formation (1700 ft thick) capable of yielding minor quantities of water. The Wasatch and Fort Union Formations and Ohio Creek Conglomerate extend from a depth of approximately 1700 to 6500 ft bgs and are generally not a source of groundwater in the Rulison area. These formations effectively separate the overlying water-bearing aquifers from the gas-producing zones in the Mesaverde Group. The natural gas wells in this area also produce some liquids. Liquids consisting of produced water and hydrocarbon condensate are brought to the surface with the natural gas and mechanically separated at the wellhead. Produced water is a mixture of water vapor in the natural gas that condenses at the surface, formation water, and remnant water from the hydraulic fracturing well development. The produced water is high in total dissolved solids and is not a usable water source.

2.3 Previous Monitoring Programs

Shallow groundwater and surface water surrounding the Rulison site have been monitored to ensure public safety under the Long-Term Hydrologic Monitoring Program (LTHMP) since 1972. The U.S. Environmental Protection Agency (EPA) performed the LTHMP sampling from the program's inception in 1972 through 2007. In 2008, LM assumed responsibility for the sampling and conducted a review of all previous LTHMP data to evaluate the effectiveness of the monitoring program. Laboratory results show that nuclear test-related contamination has not impacted groundwater or surface water at the sampled locations. The evaluation considered the depth of the detonation and the potential transport pathways for contaminant migration from the detonation zone. It was concluded that the most likely contaminant transport pathway from the detonation zone to the surface would be through a gas production well drilled near enough to the site to allow the hydraulic fractures from the well to interact with fractures from the nuclear detonation (DOE 2013). Based on these findings, a new monitoring program was implemented emphasizing the sampling of natural gas production wells near the site (DOE 2019). Although there are no reasonable pathways for detonation-related contaminants to impact the alluvial aquifer, LM has continued sampling locations as described in the LTHMP reports.

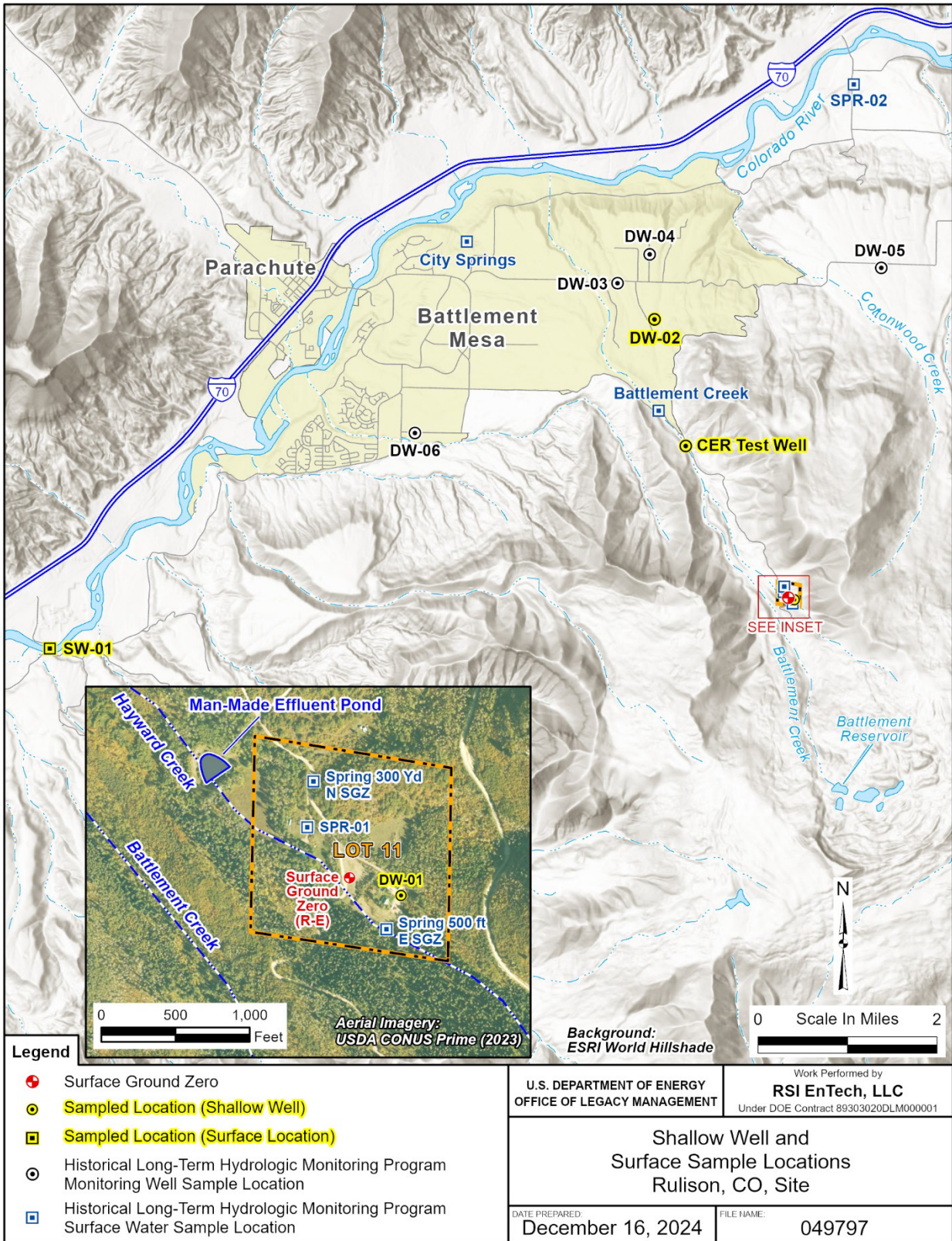
3.0 Monitoring Program

The monitoring program for the Rulison site includes collecting samples from a surface water location, shallow groundwater wells, and natural gas-producing wells near the site to monitor for potential contamination that might be attributed to the Rulison nuclear test. Sampling of a surface water location on the Colorado River was added during recent sampling events to provide background data on tritium concentrations in precipitation. Information on the frequency and process for sampling natural gas wells is provided in the *Rulison Monitoring Plan, Revision 1* (DOE 2019). Laboratory results from the sampling of natural gas wells are summarized in a separate report, which are generally completed every 2 years. A summary of the 2024 groundwater and surface water sampling is provided with the laboratory results in the following sections.

3.1 Groundwater Monitoring and Surface Water Monitoring

Samples were collected from one surface water location and three shallow groundwater wells on and near the site (SW-01, DW-01, CER Test Well, and DW-02) during the annual monitoring event that was completed on May 22, 2024. The surface water location (SW-01) on the Colorado River was added in 2021 to provide background data on the presence of tritium in precipitation. The shallow groundwater wells (DW-01, CER Test Well, and DW-02) and other offsite wells and surface water locations have been sampled annually as part of the LTHMP since 1972 (Figure 4). During this time, landowner names were used to identify some of the sample locations. To remain consistent with LM nomenclature, sample locations containing landowner names were changed in the 2020 LTHMP (DOE 2021). This was not a change in the sample location, only a change to the sample identification. The LTHMP has historically included 13 locations that are a combination of shallow wells (<200 ft deep) and surface water locations. Four of the locations (three surface locations and one shallow well) are within the site boundary. The remaining nine locations (three surface locations and six shallow wells) are offsite and range from 2 to 6 miles from the SGZ (Figure 4). Figure 4 shows the 13 LTHMP sample locations with the new sample identifiers along with the surface water and shallow wells that were sampled during the 2024 monitoring event.

The LTHMP sampling was modified in 2020 following an evaluation of potential exposure pathways and an examination of historical site data (DOE 2020). The three shallow wells (DW-01, CER Test Well, and DW-02) were selected for continued sampling based on their proximity to the site (Figure 4). The surface water location at the Colorado River (SW-01) was added in 2021 to provide background concentrations of tritium in water used for hydraulic fracturing. The samples are collected according to the *Sampling and Analysis Plan for U.S. Department of Energy Office of Legacy Management Sites* (DOE 2024b, also called the Sampling and Analysis Plan or SAP, which provides the procedures used to guide the quality assurance and quality control of the annual sampling program. These procedures incorporate standards and guidance from EPA, DOE, and ASTM International. The SAP can be accessed at <https://www.energy.gov/lm/articles/sampling-and-analysis-plan-us-department-energy-office-legacy-management-sites>.



Abbreviation: yd = yards

Figure 4. Shallow Groundwater and Surface Water Sample Location Map, Rulison Site

All samples were analyzed for tritium using the conventional method, and two samples (CER Test Well and SW-01) were analyzed using the electrolytic enrichment method, which allows the laboratory to provide a minimum detectable concentration of about 3 picocuries per liter (pCi/L) that is approximately 2 orders of magnitude lower than the conventional method. The samples were submitted to ARS Aleut Analytical, LLC, in Port Allen, Louisiana, which analyzed the samples using accepted procedures based on specified methods in accordance with the *Department of Defense and Department of Energy Quality Systems Manual for Environmental Laboratories*, (DOD and DOE 2023) to ensure that data are of known, documented quality. The laboratory minimum detectable concentration reported with these data is an estimate of the predicted detection capability of a given analytical procedure, not an absolute concentration that can or cannot be detected. These laboratory analytical results were validated in accordance with Section 5.0, “Validation of Laboratory Data,” of the *Environmental Data Validation Procedure* (DOE 2024a). A copy of the data validation memorandum is available upon request.

3.2 Groundwater and Surface Water Sample Results

The 2024 laboratory results continue to demonstrate that no detonation-related contaminants have impacted the sampled locations. Tritium was not detected above the laboratory minimum detectable concentration using the conventional laboratory method. Two samples (DW-01 and SW-01) were analyzed using the enrichment method, and tritium was detected in these samples above the laboratory minimum detectable concentration (Table 1). The detection of tritium using this method is consistent with historical results and with the worldwide tritium distribution in precipitation that resulted from aboveground nuclear testing during the 1950s and early 1960s (IAEA 2024). Aboveground tests conducted by the United States and Soviet Union ended with the 1963 *Treaty Banning Nuclear Weapon Tests in the Atmosphere, in Outer Space and Under Water* (NARA 1963), also called the Test Ban Treaty. The tritium results obtained using the enrichment method are plotted with tritium concentrations in precipitation (Figure 5 and Figure 6 at Ottawa, Canada [IAEA 2024]), which was collected through 2012 and is the longest record of tritium in precipitation in the northern hemisphere. The surface water sample (SW-01) was added to the monitoring program in 2021 to provide background tritium concentrations in precipitation since these data are no longer provided by the International Atomic Energy Agency, as shown in Figure 5 and Figure 6. The natural decay rate for tritium (half-life of 12.3 years) is also included in the figures for comparison. The similarity of the tritium levels obtained from the enrichment laboratory method to tritium levels in precipitation indicates that the wells and surface locations are supplied by recent infiltration of water from rain or snowmelt. These results are much lower than the EPA drinking water standard for tritium of 20,000 pCi/L presented in Title 40 *Code of Federal Regulations* Section 141.16 (40 CFR 141.16). Table 1 provides the 2024 sample results.

Table 1. 2024 Groundwater and Surface Water Sample Results, Rulison Site

Sample Location ^a (Shallow Wells and Surface Water)	Date Collected	Tritium by	
		Conventional Method (pCi/L)	Enrichment Method (pCi/L)
DW-01 (shallow well)	5/22/2024	<322	9.3
CER Test Well (shallow well)	5/22/2024	<324	Not analyzed
DW-02 (shallow well)	5/22/2024	<324	Not analyzed
		<322 ^a	Not analyzed
SW-01 (background surface water)	5/22/2024	<323	23.4

Note:

^a This is a field duplicate sample.

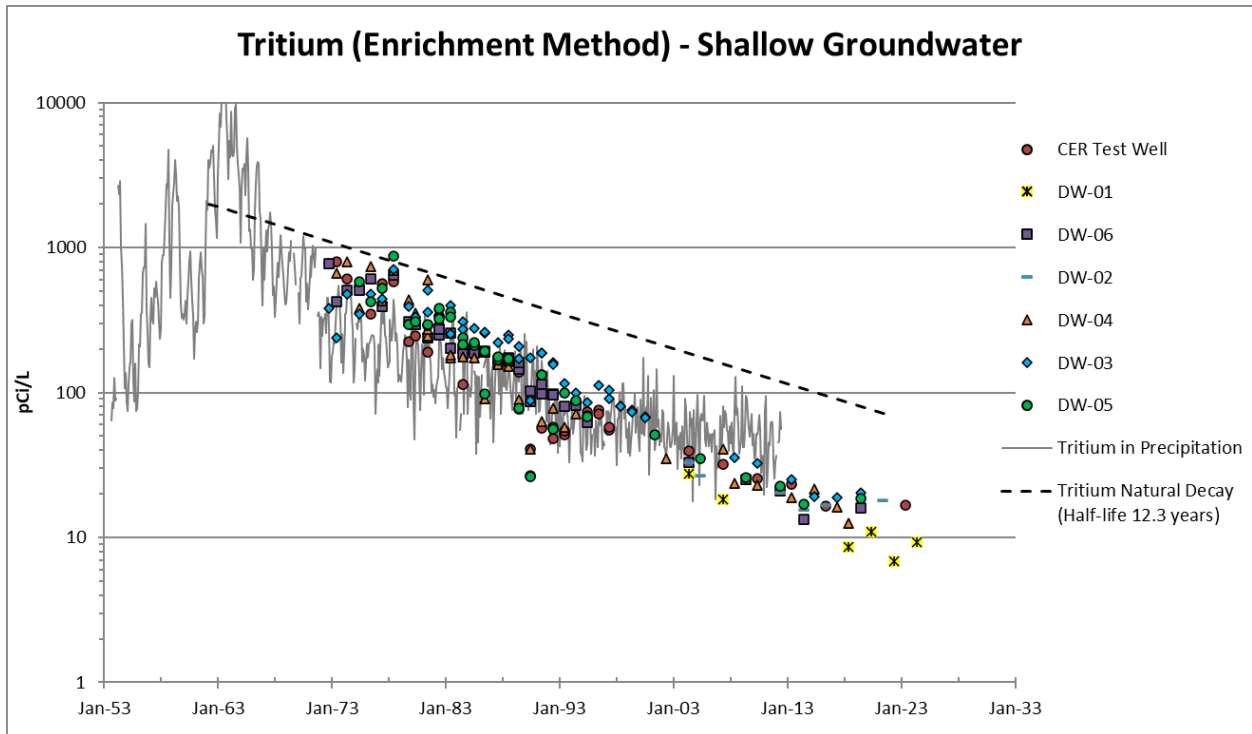
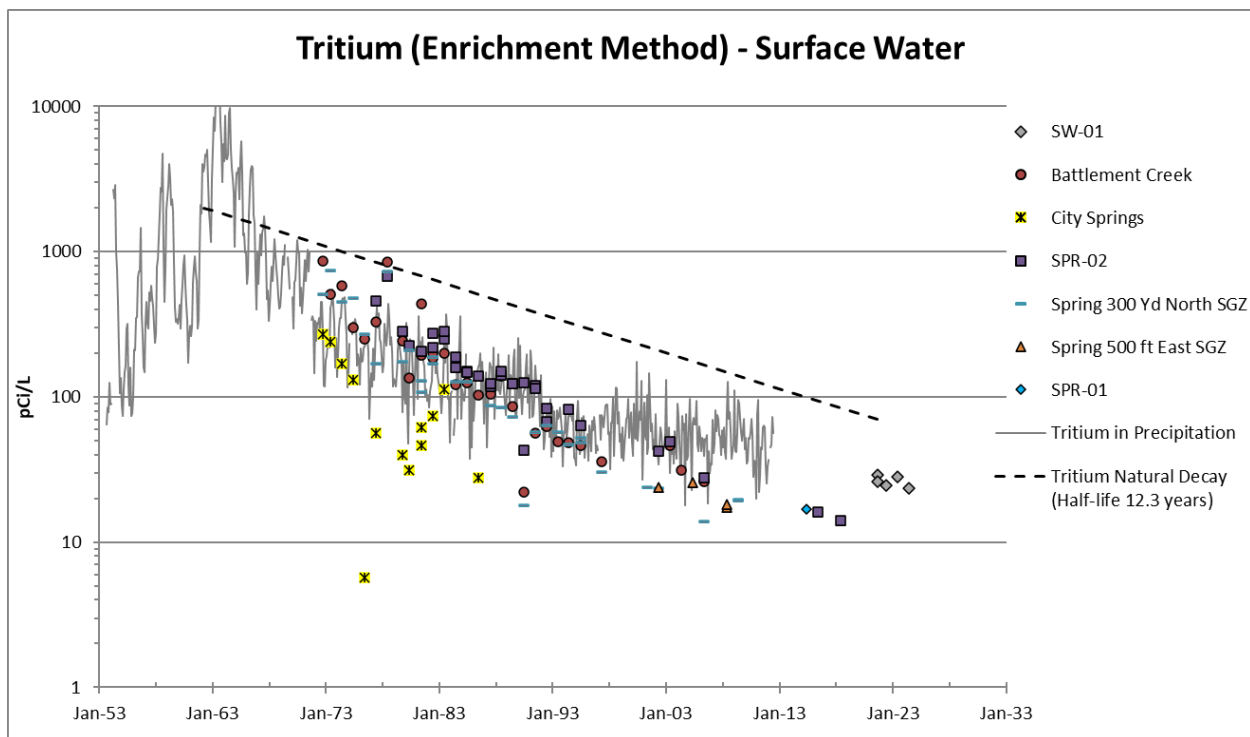


Figure 5. Comparison of Tritium in Shallow Wells near the Rulison Site with Tritium in Precipitation at Ottawa, Canada (Site with the Longest Historical Tritium Record [IAEA 2024])



Abbreviation: Yd = yards

Figure 6. Comparison of Tritium in Surface Water near the Rulison Site with Tritium in Precipitation at Ottawa, Canada (Site with the Longest Historical Tritium Record [IAEA 2024])

4.0 Conclusions

Laboratory results from the 2024 monitoring event indicate that no Rulison site detonation-related contaminants have impacted the sampled locations on and near the site. The detection of tritium using the enrichment method at a concentration of 9.3 pCi/L in the sample collected from well DW-01 is consistent with background tritium concentrations in precipitation that resulted from aboveground nuclear tests conducted at different global locations. This is supported by the tritium concentration (23 pCi/L) detected in the background sample SW-01 collected from the Colorado River. This sample was also analyzed using the enrichment method and is consistent with tritium concentrations in precipitation (Figure 5 and Figure 6 at Ottawa, Canada [IAEA 2024]). Based on these results and past evaluations, the sampling planned for 2025 will continue to focus on the onsite well (DW-01), two offsite well locations (CER Test Well and DW-02), and background surface water location (SW-01). This report and previous reports are available on the LM public website at <https://www.energy.gov/lm/rulison-colorado-site>. Data collected during this and previous monitoring events are available on the GEMS website at <https://gems.lm.doe.gov/#site=RUL>.

5.0 References

40 CFR 141.16. U.S. Environmental Protection Agency, “Maximum Contaminant Levels for Beta Particle and Photon Radioactivity from Man-Made Radionuclides in Community Water Systems,” *Code of Federal Regulations*.

AEC (U.S. Atomic Energy Commission), 1973. *Project Rulison Manager’s Report*, NVO-71, Nevada Operations Office, April.

CDPHE (Colorado Department of Public Health and Environment), 1998. D. Stoner, environmental protections specialist, Solid Waste Unit, Compliance Program, Colorado Department of Public Health and Environment, letter (about Surface Closure Report, Rulison Site) to R.C. Wycocoff, Environmental Restoration Division, U.S. Department of Energy, Nevada Operations Office, September 9.

DOD and DOE (U.S. Department of Defense and U.S. Department of Energy), 2023. *Department of Defense and Department of Energy Quality Systems Manual for Environmental Laboratories*, version 6.0.

DOE (U.S. Department of Energy), 1998. *Rulison Site Surface Closure Report*, DOE/NV-510, Nevada Operations Office, July.

DOE (U.S. Department of Energy), 2013. *Modeling of Flow and Transport Induced by Gas Production Wells near the Project Rulison Site, Piceance Basin, Colorado*, LMS/RUL/S08716, Office of Legacy Management, June.

DOE (U.S. Department of Energy), 2015. *United States Nuclear Tests, July 1945 Through September 1992*, DOE/NV-209-Rev 16, National Nuclear Security Administration, Nevada Field Office, September.

DOE (U.S. Department of Energy), 2019. *Rulison Monitoring Plan, Revision 1*, LMS/RUL/S06178, Office of Legacy Management, December.

DOE (U.S. Department of Energy), 2020. *2019 Long-Term Hydrologic Monitoring Program Report for Rulison, Colorado, Site*, LMS/RUL/S27939, Office of Legacy Management, May.

DOE (U.S. Department of Energy), 2021. *2020 Long-Term Hydrologic Monitoring Program Report for Rulison, Colorado, Site*, LMS/RUL/S31894, Office of Legacy Management, September.

DOE (U.S. Department of Energy), 2024a. *Environmental Data Validation Procedure*, LMS/PRO/S15870-2.0, Office of Legacy Management, August.

DOE (U.S. Department of Energy), 2024b. *Sampling and Analysis Plan for U.S. Department of Energy Office of Legacy Management Sites*, LMS/PRO/S04351-16.8, Office of Legacy Management, December.

ERDA (U.S. Energy Research and Development Administration), 1977. *Rulison Radiation Contamination Clearance Report*, PNE-R-68, Nevada Operations Office, June.

IAEA (International Atomic Energy Agency), 2024. “Global Network of Isotopes in Precipitation (GNIP),” WISER Portal, <https://www.iaea.org/services/networks/gnip>, accessed December 2024.

IT (IT Corporation), 1996. *Preliminary Site Characterization Report Rulison Site, Colorado*, ITLV/10972–177, August.

NARA (National Archives and Records Administration), 1963. *Treaty Banning Nuclear Weapon Tests in the Atmosphere, in Outer Space and Under Water*, Treaties and Other International Agreements Series No. 5433, General Records of the U.S. Government, Record Group 11.

Pawloski, G.A., A.F.B. Tompson, S.F. Carle, W.L. Bourcier, C.J. Bruton, J.I. Daniels, R.M. Maxwell, D.E. Shumaker, D.K. Smith, and M. Zavarin, Eds., 2001. *Evaluation of the Hydrologic Source Term from Underground Nuclear Tests on Pahute Mesa at the Nevada Test Site: The CHESHIRE Test*, UCRL-ID-147023, Lawrence Livermore National Laboratory, Livermore, California, May.

Reynolds, M., 1972. “Project Rulison—Summary of Results and Analyses,” *Nuclear Technology* 14(2):187–193.

Smith, C.F., Jr., 1971. *Gas Analysis Results for Project Rulison Production Testing Samples*, UCRL-51153, Lawrence Livermore National Laboratory, Livermore, California, November 29.

Tompson, A.F.B., C.J. Bruton, G.A. Pawloski, W.L. Bourcier, S.F. Carle, A.B. Kersting, J.A. Rard, D.E. Shumaker, and D.K. Smith, 1999. *Evaluation of the Hydrologic Source Term from Underground Nuclear Tests in Frenchman Flat at the Nevada Test Site: The CAMBRIC Test*, UCRL-ID-132300, Lawrence Livermore National Laboratory, Livermore, California, March 23.

USGS (U.S. Geological Survey), 1969. *Geology and Hydrology of the Project Rulison Exploratory Hole, Garfield County, Colorado*, USGS-474-16, Denver, Colorado, April 4.

Yurewicz, D.A., K.M. Bohacs, J.D. Yeakel, and K. Kronmueller, 2003. “Source Rock Analysis and Hydrocarbon Generation, Mesaverde Group and Mancos Shale, Northern Piceance Basin, Colorado,” in *Piceance Basin: 2003 Guidebook*, edited by K.M. Peterson, T.M. Olson, and D.S. Anderson, Rocky Mountain Association of Geologists, Denver, Colorado, pp. 130–153.